

The Journal of Threatened Taxa (JoTT) is dedicated to building evidence for conservation globally by publishing peer-reviewed articles online every month at a reasonably rapid rate at www.threatenedtaxa.org. All articles published in JoTT are registered under [Creative Commons Attribution 4.0 International License](https://creativecommons.org/licenses/by/4.0/) unless otherwise mentioned. JoTT allows unrestricted use, reproduction, and distribution of articles in any medium by providing adequate credit to the author(s) and the source of publication.

Journal of Threatened Taxa

Building evidence for conservation globally

www.threatenedtaxa.org

ISSN 0974-7907 (Online) | ISSN 0974-7893 (Print)

COMMUNICATION

HABITAT STRUCTURE DETERMINES THE ABUNDANCE OF THE ENDANGERED SHARPE'S LONGCLAW *MACRONYX SHARPEI* (AVES: PASSERIFORMES: MOTACILLIDAE) AT TIMAU MONTANE GRASSLANDS IN CENTRAL KENYA

Dominic Kimani, Muchane Muchai, Johnstone Kimanzi, Joseph Mwangi, Wanyoike Wamiti, Samuel Bakari, Bernhard Walter & Peter Njoroge

26 April 2020 | Vol. 12 | No. 5 | Pages: 15565–15571
DOI: 10.11609/jott.5466.12.5.15565-15571



For Focus, Scope, Aims, Policies, and Guidelines visit <https://threatenedtaxa.org/index.php/JoTT/about/editorialPolicies#custom-0>
For Article Submission Guidelines, visit <https://threatenedtaxa.org/index.php/JoTT/about/submissions#onlineSubmissions>
For Policies against Scientific Misconduct, visit <https://threatenedtaxa.org/index.php/JoTT/about/editorialPolicies#custom-2>
For reprints, contact <ravi@threatenedtaxa.org>

The opinions expressed by the authors do not reflect the views of the Journal of Threatened Taxa, Wildlife Information Liaison Development Society, Zoo Outreach Organization, or any of the partners. The journal, the publisher, the host, and the partners are not responsible for the accuracy of the political boundaries shown in the maps by the authors.

Member



Publisher & Host





Habitat structure determines the abundance of the Endangered Sharpe's Longclaw *Macronyx sharpei* (Aves: Passeriformes: Motacillidae) at Timau montane grasslands in central Kenya

Dominic Kimani¹ , Muchane Muchai² , Johnstone Kimanzi³ , Joseph Mwangi⁴ ,
Wanyoike Wamiti⁵ , Samuel Bakari⁶ , Bernhard Walter⁷ & Peter Njoroge⁸

^{1,2,3} Department of Wildlife Management, University of Eldoret, P.O. Box 1125-30100, Eldoret, Kenya.

^{1,4,5,8} Zoology Department, National Museums of Kenya, P.O. Box 40658-00100, Nairobi, Kenya.

² Department of Clinical Studies, University of Nairobi, P.O. Box 30197-00100, Nairobi, Kenya.

⁶ BirdLife International, African Secretariat, P.O. Box 3502-00100, Nairobi, Kenya.

⁷ Biological Station Guetersloh and Bielefeld e.V. Niederheide 63 33659 Bielefeld, Germany.

¹ dkk4.kimani@gmail.com (corresponding author), ² mmuchaim@yahoo.com, ³ kimanzijo@gmail.com, ⁴ mwamujos@yahoo.com,

⁵ wamiti@gmail.com, ⁶ bakarismuel@gmail.com, ⁷ Bernhard.Walter@biostationgt-bi.de, ⁸ peter.njoroge2306@gmail.com

Abstract: Understanding the habitat selection and structure of a species is critical for developing evidence-centered conservation actions. Sharpe's Longclaw *Macronyx sharpei*, a passerine bird endemic to Kenya, is threatened by reductions in habitat size and quality that have left it inhabiting a small and highly fragmented range. From January to June 2016 we investigated the abundance and density of Sharpe's Longclaw in Marania farm located in Meru county in the northern sector of Mt. Kenya, where no previous study had been done. Population abundance and density were determined using the flush and count method. We observed that these birds were exclusively found in grasslands, being most abundant in habitats of short grass with tussocks, and less so in areas with tall grass. This habitat specificity indicates a key requirement for survival of Sharpe's Longclaw populations in this area. We recommend surveys in and around Marania farm to determine the distribution of suitable habitats for this species, and that the farm be designated an Important Bird Area. Further studies should also focus on determining the intensity of grazing that is compatible with conservation of Sharpe's Longclaw populations.

Keywords: Conservation, density, endemic, grasslands, passerine bird, population.

Editor: Simon Dowell, Chester Zoo, UK.

Date of publication: 26 April 2020 (online & print)

Citation: Kimani, D., M. Muchai, J. Kimanzi, J. Mwangi, W. Wamiti, S. Bakari, B. Walter & P. Njoroge (2020). Habitat structure determines the abundance of the Endangered Sharpe's Longclaw *Macronyx sharpei* (Aves: Passeriformes: Motacillidae) at Timau montane grasslands in central Kenya. *Journal of Threatened Taxa* 12(5): 15565–15571. <https://doi.org/10.11609/jott.5366.12.5.15565-15571>

Copyright: © Kimani et al. 2020. Creative Commons Attribution 4.0 International License. JoTT allows unrestricted use, reproduction, and distribution of this article in any medium by providing adequate credit to the author(s) and the source of publication.

Funding: Nature and Biodiversity Conservation Union (NABU) Germany; African Bird Club; National Research Fund Kenya (NRF).

Competing interests: The authors declare no competing interests.

For **Author details & Author contribution** see end of this article.

Acknowledgements: This study would not have been possible without the unconditional permission and support from the management and staff of Marania farm. In particular, we are deeply indebted to Jamie Murray, the general manager for all logistical assistance. The financial support received from NABU (BirdLife Germany) through Werner Schroder, African Bird Club, David Fox Family, Patrick Mbose, Late Sarah Higgins, and National Research Fund (Kenya) is highly appreciated. Our appreciation goes to National Museums of Kenya for allowing time for the first author to be away from duty. We are sincerely grateful to University of Eldoret for supervising this research. Johana Kamau's dedication to data collection and perseverance to the chilly weather is not taken for granted. Boniface Mwangi is treasured for his time helping with the statistical analysis and production of the study area map. Many thanks to Dr. Kariuki Nding'ang'a for invaluable help in the field, the staff of Wildlife Department for assistance to first author. We also wish to thank Drs. Rosie Trevelyan and Kevin Wallace of Tropical Biology Association for valuable comments on the manuscript.



INTRODUCTION

Abundance of bird species is largely influenced by the spatial and temporal distribution of key resources (McCain 2009). Elevation and slope affect vegetation structure, site productivity, distribution, composition, and secondary biotic interactions (Girma et al. 2017). The conservation of Sharpe's Longclaw (Image 1) requires a detailed understanding of population sizes and distribution, and habitat quality and availability. This endemic and endangered species is restricted to grasslands at 1,800–3,500 m altitude (BirdLife International 2018). It has been reported at higher elevations, but this has not been confirmed (Borghesio et al. 2013). Much of past research has been concentrated in the Kinangop grasslands in the southern parts of Nyandarua County (Muchai 1998; Muchai et al. 2002; Ndang'ang'a et al. 2002; Mwangi et al. 2012; Borghesio et al. 2013). The species occurs at low densities throughout its range (BirdLife International 2015). In Kinangop grasslands, Ndang'ang'a et al. (2002) recorded a density of 1.2 individuals/ha while Muchai et al. (2002) and Mwangi et al. (2012) found an overall mean density of 0.85 ± 0.21 individuals/ha and 1.24 ± 0.15 individuals/ha, respectively. At Lake Ol' Bolossat, Wamiti et al. (2008) recorded a density of (0.004–0.06 individuals/ha). There are few precise breeding records (Keith et al. 1992). The highland grasslands that are strongholds for Sharpe's Longclaw (Muchai 1998; Muchai et al. 2002; Ndang'ang'a et al. 2002; Borghesio et al. 2013) also provide nesting, feeding, and breeding habitats for the eastern African endemic and near-threatened Jackson's Widowbird *Euplectes jacksoni*, the regionally threatened Long-tailed Widowbird *E. progne*, and the Afro-tropical highland biome-restricted species Hunter's Cisticola *Cisticola hunteri* (Bennun & Njoroge 1999).

The Timau high altitude grasslands in Kenya have recently undergone significant reduction, primarily due to habitat conversion to crop lands (Kimani et al. 2015). The alarming decline of local grassland habitat is linked to land sub-division within family units and sale of land parcels, resulting in native grassland loss and fragmentation. The local people living in the Kenyan highlands whose livelihood mainly revolves around small-scale farming play a large role in habitat fragmentation (Muchai 1998; Ndang'ang'a et al. 2002; Kimani et al. 2015). The main threat to native grassland habitat is conversion, especially through cultivation and establishment of woodlots of exotic species (Muchai 1998; Muchai et al. 2002; Borghesio et al. 2013). These factors have exacerbated the pressure on



© Credit Samuel Bakari

Image 1. Sharpe's Longclaw *Macronyx sharpei*

highland grassland biodiversity, and the establishment of large-scale farming for commercial crops that are more profitable than livestock has also contributed to reduction of native grassland habitats.

Lack of appropriate information on the population status of Sharpe's Longclaw prevents efficient management of the habitats necessary to guide conservation efforts. Collection of such information on population size, abundance, and density are important when deciding where to allocate resources in conservation and research activities, and to provide empirical data to evaluate existing management strategies. These data are essential for the IUCN Red List of Threatened Species assessments. The overall objective of this study was to investigate population abundance and density of Sharpe's Longclaw in different habitat types in Marania farm, following reports that the species was present there. A detailed understanding of population size, spatial distribution and demographic trends will inform future management decisions and conservation interventions.

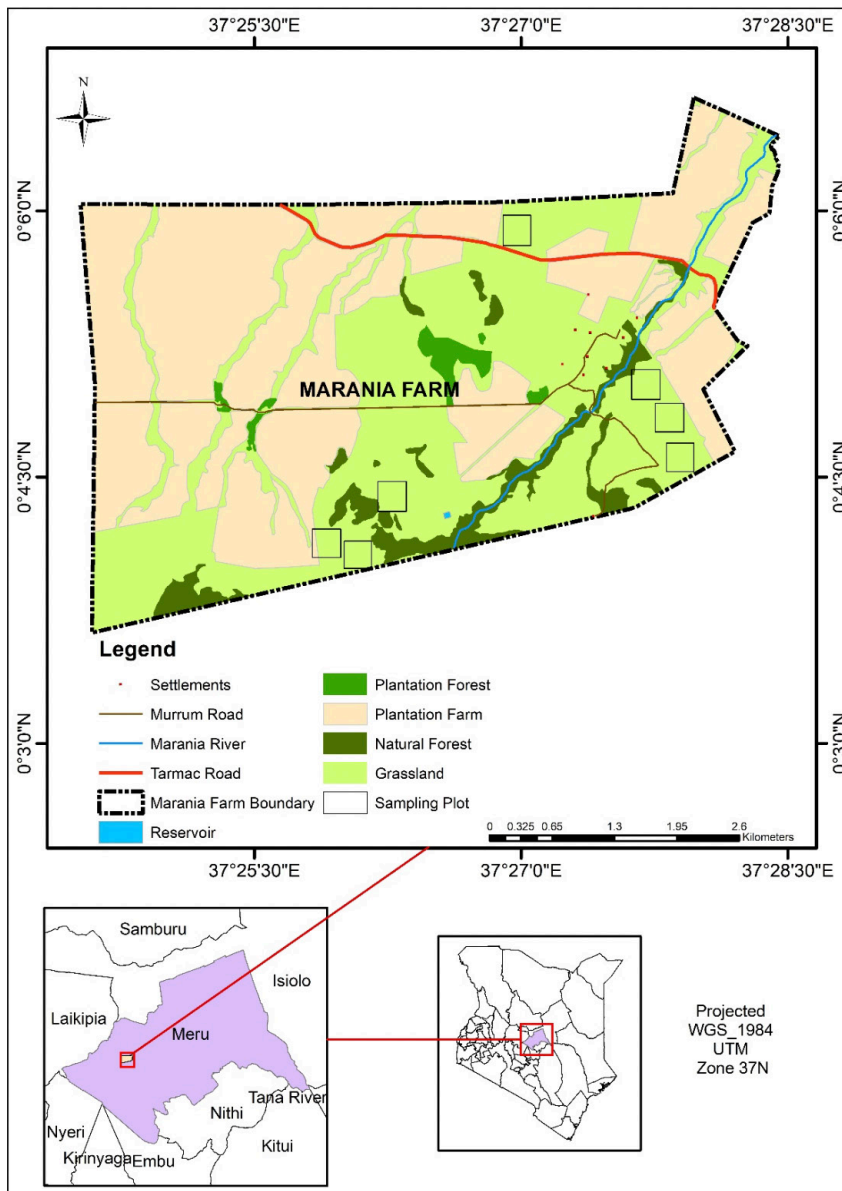


Figure 1. The location of Marania farm, Meru County, Kenya.

MATERIALS AND METHODS

The population of Sharpe's Longclaw was studied in Marania farm, Meru County (0.080–0.070 °N and 37.458–37.367 °E), part of the northern section of Mt. Kenya that offers a previously unstudied fragmented population of the species. Marania farm is an approximately 2,580ha privately owned farm bordering Mt. Kenya National Park on the north-eastern side. The elevation of Marania farm grasslands where this study was carried out ranged from 2400 to 2800 m. In Marania farm, rearing of livestock (sheep and beef cattle) that forage in the native grasslands is controlled by paddocks, although the animals are supplemented with hay during

the dry seasons. There is also natural vegetation in the valleys and hill tops.

Grasslands in this farm cover an area of 865ha while the rest is under cultivation and interspersed with natural and planted forests. The farm has crops such as wheat, canola, peas, maize, and a small portion of mixed crops. They also practice animal husbandry. During the study, there were approximately 150 cattle grazing in the study area, over 400 sheep, and about 20 horses. The average annual rainfall in the area ranges 380–2,500 mm with a bimodal rainfall pattern in March–May and October–December (Gakuubi & Wanzala 2012).

Sharpe's Longclaw is a monogamous, sedentary

species restricted to high altitude, open, short grasslands. It is territorial and insectivorous, feeding particularly on grasshoppers and beetles. Birds live in permanent groups of two–seven individuals depending on the quality of their habitat (Muchai 1998; Muchai et al. 2002).

Sampling Design and Census

During the first month of the study (20 January–20 February 2016), a survey of Marania farm was done to determine appropriate study plots through purposive sampling. The study area was divided into six grassland plots (Figure 1) measuring an average of 2.25 ± 0.12 (SD) ha (range 2.21–2.45 ha). Three of the plots were characterized as short grass with dense tussocks (SGWDT) and the other three as tall grass (TG) following Muchai et al. (1998). The plots were separated by different matrices with either natural forest, farm cultivation or plantation forests. Grass height at plots was classified as SGWDT and ranged between 10–20 cm while those of TG were 30cm and above, following design employed by Muchai (1998).

The plots were monitored for a period of five months (February–June 2016). Sharpe's Longclaw (SLC) is known to breed during the onset of rains or shortly after rains (Kimani et al. 2015). The study partly coincided with the breeding season but, only for a short period between April and May (Muchai 1998). This was done deliberately to ensure the breeding population was present. Due to the limitation of time, the study lasted only five months, in which February and March were dry while April–June were wet months. Censuses were conducted at each study plot at different times of the day (spread in three 4-hour long observation periods; 06.00–10.00 h, 10.00–14.00 h, 14.00–18.00 h) to give a spread of data on a spatial and temporal spread throughout the day. Each study plot was intensively searched once every week; 20 censuses were undertaken in each of the six study plots. Study plots were intensively searched using a flush-out and count method (Muchai 1998; Muchai et al. 2002)

where two people dragged a 50m rope on opposite ends to flush out the birds for easier sighting. Flushed out Sharpe's Longclaws were recorded, and the position they flew to was noted to avoid double counting. The original position of the bird was marked using a hand-held global positioning system unit (Garmin etrex 20).

Statistical analysis

Bird abundance in grasslands was examined in relation to plot size, grass height and presence/absence of tussocks using a generalized linear model via Poisson regression (Table 1). Abundance per plot was calculated as the total number of individuals counted divided by the number of sessions the birds were counted in that plot. Mean density was calculated as the mean abundance divided by the size in hectares of the plot. Generalized linear model via Poisson regression was used to determine which of the independent variables explained population abundance in the grassland habitat.

RESULTS

Mean abundance

The mean \pm SE abundance in short grass with dense tussocks (SGWDT) was 4.53 ± 0.30 while in tall grass (TG) it was 2.23 ± 0.29 . Figure 2 illustrates a significant difference in mean abundance between SGWDT and TG ($P= 0.01$, $df=40$, $t = -6.95$).

Determinants of Sharpe's Longclaw abundance

Three variables were the significant determinants: grass height ($\beta =0.021$, $P=0.050$), tussocks presence/absence ($\beta=1.101$, $P=0.001$) and interaction of grass height and tussocks presence /absence ($\beta= -0.059$, $P<0.001$) (Table 1). The equation of the fitted model was:

$$\text{Abundance} = 1.188 + 0.021 \text{ grass height} + 1.101 \text{ tussocks presence/absence} - 0.059 \text{ grass height} * \text{tussocks presence/absence}.$$

Table 1. Generalized linear models via Poisson regression examining the relationship between grass height (GLHT), tussock presence/absence (TUPA) and their interaction (TUPA * GLHT) on Sharpe's Longclaw abundance in Marania farm grasslands.

Parameter	Estimate \pm SE	95% confidence limits	Wald chi-square	Df	Sig.
Intercept	1.19 \pm 0.18	0.83, 1.55	42.43	1	< 0.01
Grass height	0.02 \pm 0.01	-0.00, 0.04	3.84	1	0.05
Tussock presence/absence	1.10 \pm 0.34	0.427, 1.78	10.25	1	0.001
TUPA * GLHT	-0.059 \pm 0.01	-0.086, -0.03	18.52	1	< 0.001

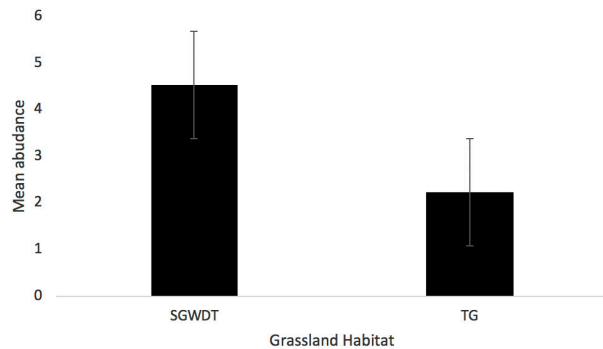


Figure 2. Comparison of mean abundance of Sharpe's Longclaw between short grass with dense tussocks (SGWDT) and tall grass (TG).

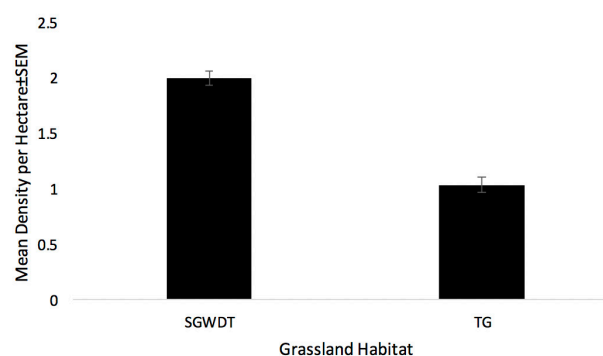


Figure 3. Mean population density of Sharpe's Longclaw in short grass with dense tussocks and tall grass in Marania farm.

Mean density

As birds did not occur in non-grassland habitats, the six grassland plots had a mean density of 0.78 ± 0.37 SD. The mean density was 2.00 ± 0.06 and 1.04 ± 0.07 Sharpe's Longclaw per ha for SGWDT and TG, respectively (Figure 3). There was a significant difference between mean densities in SGWDT and TG (Mann-Whitney W-test = 89.0, df = 42, $P = 0.0001$).

DISCUSSION

Sharpe's Longclaw population abundance and densities had a clear association with habitat variables. The birds revealed a strong preference for areas of short grass with dense tussocks. Areas of tall grass were less preferred, and birds occurred there at lower densities. This preference for a specific grassland habitat matches that reported in studies by Muchai et al. (1998, 2002) and Mwangi et al. (2012) in Kinangop grasslands.

It has been observed that many endemic bird species have high densities on grazed pastures due to co-

evolution with large grazing mammals, for instance the Chestnut-collared Longspur *Calcarius ornatus* (Kantrud 1981; Knopf & Rupert 1996). Low grazing intensity results in long grass and bush encroachment, while intense grazing destroys grass tussocks (Borghesio et al. 2013). Muchai et al. (2002) found that the persistence of Sharpe's Longclaw in the grasslands depends on intermediate levels of disturbance, resulting from grazing by mammalian herbivores. Our findings are consistent with those of Muchai et al. (2002), in that all the areas where we found Sharpe's Longclaw had grazing, especially by cattle. Although we did not have adequate data to verify a relationship with various grazers, we suggest that the stocking rate might be more important than the species, as shown in Sliwinski & Koper (2015). Besides domestic animals, wild antelopes (Bushbucks *Tragelaphus scriptus*, Duiker *Neotragus moschatus*) were regularly observed during the survey period, while Cape Buffaloes *Syncerus caffer* and African Elephant *Loxodonta africana* from the neighboring Mount Kenya National Park sometimes were reported to break fences and graze as well (unpublished data). These wild animals might also influence grassland height (Ogada et al. 2008) and ultimately Sharpe's Longclaw, but the data we had did not allow for testing of their effects on grassland height and structure. Field observations showed that Sharpe's Longclaw used tussocks mainly to rest during the hottest part of the day, which also agrees with observations by Muchai et al. (2002).

The height of grass plays an overriding role in determining habitat segregation and food specialization among bird species (Fisher & Davis 2011). Interspecific competitive exclusion is believed to be the main mechanism explaining occurrence or specialization of birds in grassland vegetation of different heights (McDonald 2017). Therefore, at least within grassland systems, mosaics of short and longer vegetation are likely to hold the maximum benefit for many farmland birds (Benton et al. 2003). Maphisa et al. (2017) argue that a combination of grass height and cover is more essential than just grass height alone or grass cover alone. It would be plausible to argue that Sharpe's Longclaw would probably spend more time being vigilant to detect predators other than carrying out other essential life process in tall grass due to tall grass obscuring their visibility (Muchai et al. 2002).

Although effect of patch size was not investigated in this study, results by Mwangi et al. (2012) showed large patches of grassland that are favoured by Sharpe's Longclaw compared to small ones. Consistent with this finding, Marania farm, being a large grassland under the

same management, is a potential Sharpe's Longclaw conservation site if properly managed. A year-long study is recommended to understand the breeding strategies that are exhibited by the Sharpe's Longclaw. In addition, our findings indicated that tall grass was equally good for Jackson's Widowbird *Euplectes jacksoni*, a Near Threatened species. This species had over 40 nests in the tall grasses. Large patches of grassland would be ideal for conservation of various species in different categories of threats.

Conclusion and Recommendations

The findings of this study demonstrate that Timau grasslands still hold suitable and extensive habitat for the endemic and Endangered Sharpe's Longclaw. The study established that the mean population abundance was higher for short grass with dense tussocks compared with tall grass. Mean density was also higher in habitat of short grass with dense tussocks. In comparison to previous studies, it was acknowledged that Marania appeared better than other parts, like Kinangop grassland, previously thought to be the world stronghold of the species.

Sharpe's Longclaw is threatened by a very rapid and continuing reduction in the extent and quality of its habitat (Birdlife 2018). It is, therefore, imperative for conservationists to collaborate with farms such as Marania farm to adopt suitable management practices due to the role they play in conservation of this grassland-dependent bird species. Surveys in neighbouring farms should also be carried out to determine abundance and the extent of population distribution of Sharpe's Longclaw, and to assess the suitability of its habitat. This will be critical in guiding a discussion with the landowners on the merits of designating the farm/grasslands the status of BirdLife International Important Bird Area (IBA). This would be an important task that can be undertaken by the Sharpe's Longclaw Working Group. One way of recognizing the role Marania farm play in conserving Sharpe's Longclaw would be designating the area as an IBA to allow easy marketing of the area as a key tourist attraction site (avi-tourism) for Meru County. Being an endemic species that is becoming rare in its formerly known areas like Kinangop, good marketing would take keen bird watchers to Marania farm where it would be easy to find and perhaps photograph the Sharpe's Longclaw in its natural habitat.

Further research needs to be undertaken for both wet and dry seasons in order to understand if the species is affected by seasonal dynamics. Further research is also needed to shed light on the most appropriate

conservation measures. More information is required to determine the best grazing regimes optimal for Sharpe's Longclaw with economic benefits for easier adoption.

REFERENCES

- Bennun, L.A. & P. Njoroge (1999). *Important Bird Areas in Kenya*. Nature Kenya, East Africa Natural History Society. Nairobi, Kenya, 199pp.
- Benton, T.G., J.A. Vickery & J.D. Wilson (2003). Farmland biodiversity: is habitat heterogeneity the key? *Trends in Ecology & Evolution* 18(4): 182–188. [https://doi.org/10.1016/S0169-5347\(03\)00011-9](https://doi.org/10.1016/S0169-5347(03)00011-9)
- BirdLife International (2018). Species factsheet: *Macronyx sharpei*. Downloaded from <http://www.birdlife.org> on 27 May 2018.
- Borghesio, L., M. Muchai, K. Nding'ang'a & P. Njoroge (2013). Is Sharpe's Longclaw *Macronyx sharpei* a fire-dependent species in Kenya's Altimontane zone? *Bulletin of Africa Bird Club* 20(2): 149–155.
- Fisher, R.J. & S.K. Davis (2011). Post-fledging dispersal, habitat use, and survival of Sprague's pipits: Are planted grasslands a good substitute for native? *Biological Conservation* 144(1): 263–271. <https://doi.org/10.1016/j.biocon.2010.08.024>
- Gakuubi, M.M. & W. Wanzala (2012). A survey of plants and plant products traditionally used in livestock health management in Buuri District, Meru County, Kenya. *Journal of Ethnobiology and Ethnomedicine* 8(1): 39. <https://doi.org/10.1186/1746-4269-8-39>
- Girma, Z., Y. Mamo, G. Mengesha, A. Verma & T. Asfaw (2017). Seasonal abundance and habitat use of bird species in and around Wondo Genet Forest, south-central Ethiopia. *Ecology and Evolution* 7(10): 3397–3405. <https://doi.org/10.1002/ece3.2926>
- Kantrud, H.A. (1981). Grazing intensity effects on the breeding avifauna of North Dakota native grasslands. *Canadian Field Naturalist* 95(4): 404–417.
- Keith, G.S., E.K. Urban & C.H. Fry (1992). *The Birds of Africa, Volume 4*. Academic Press, London, 608pp.
- Kimani, D., W. Wamiti, K. Nding'ang'a & J. Gitogo (2015). Field report to NABU, BirdLife International Germany on Survey of Sharpe's Longclaw *Macronyx sharpei* in the northern sector of Mt. Kenya. Moorland and Timau Grasslands, Meru County, Kenya.
- Knopf, F.L. & J.R. Rupert (1996). Reproduction and movements of Mountain Plovers breeding in Colorado. *The Wilson Bulletin* 108(1): 28–35.
- Maphisa, D.H., H. Smit-Robinson, L.G Underhill & R. Altwegg (2017). Management factors affecting densities of common grassland birds of high elevation grasslands of eastern South Africa: Ingula as a case study. *Avian Research* 8: 5. <https://doi.org/10.1186/s40657-017-0063-8>
- McCain, C.M. (2009). Global analysis of bird elevation diversity. *Global Ecology and Biogeography* 18: 346–360. <https://doi.org/10.1111/j.1466-8238.2008.00443.x>
- McDonald, L. (2017). The influence of patch size, landscape composition, and edge proximity on songbird densities and species richness in the northern tall-grass prairie. MSc Thesis. Department of Environment and Geography, University of Manitoba, Winnipeg, Manitoba, xiii+110pp.
- Muchai, M. (1998). Some aspects of the conservation biology of Sharpe's Longclaw (*Macronyx sharpei*, Jackson 1904) - a Kenya grassland endemic bird. MSc Thesis. Department of Zoology, Moi University, Eldoret, Kenya, xiv+111pp.
- Muchai, M., L. Lens & L. Bennun (2002). Habitat selection and conservation of Sharpe's Longclaw (*Macronyx sharpei*), a threatened Kenyan grassland endemic. *Biological Conservation* 105(3): 271–277.
- Mwangi, J.M., G. Wahungu & M. Muchai (2012). Effects of habitat fragmentation on movement, dispersal, population and nesting success of Sharpe's (*Macronyx sharpei* Jackson, 1904) in Kinangop

Plateau, Kenya. MSc Thesis. Department of Wildlife Management, Moi University, Kenya, xii+73pp.

Ndang'ang'a, P.K., M.A. du Plessis, P.G. Ryan & L.A. Bennun (2002). Grassland decline in Kinangop Plateau, Kenya: implications for conservation of Sharpe's Longclaw (*Macronyx sharpei*). *Biological Conservation* 107: 341–350.

Ogada, D.L., M.E. Gadd, R.S. Ostfeld, T.P. Young & F. Keesing (2008). Impacts of large herbivorous mammals on bird diversity and abundance in an African savanna. *Oecologia* 156(2): 387–97. <https://doi.org/10.1007/s00442-008-0994-1>

Sliwinski, M.S. & N. Koper (2015). Managing mixed-grass prairies for songbirds using variable cattle stocking rates. *Rangeland Ecology and Management* 68(6): 470–475. <https://doi.org/10.1016/j.rama.2015.07.010>

Wamiti, W., P. Malaki & A. Mwangi (2008). Birds of Conservation Concern Upgrades Lake Ol' Bolossat Status to Kenya's 61st Important Bird Area. Paper presented at the 12th Pan-African Ornithological Congress, Goudin Spa Conference Centre, Cape Town, South Africa, 7–12 September 2008.



Author details: DOMINIC KIMANI (DK) is the lead ornithologist for Kipeto Energy PLC (KEP). Prior to joining KEP, he worked as a research scientist at National Museums of Kenya. Dominic has an MSc degree in Wildlife Ecology from University of Eldoret. He has undertaken extensive avian research and conservation for over 20 years. DR. MUCHANE MUCHAI (MM) is currently the Head of Wildlife Section and Senior Lecturer, Department of Clinical Studies, Faculty of Veterinary Medicine, University of Nairobi. Dr. Muchai is currently teaching graduate and post graduate students and conducting research focusing on biodiversity management and conservation as well as food security. BERNHARD WALTER (BW) is a senior biologist and the Chief executive officer at the Biological station in Bielefeld and Gutersloh in Germany. He has been involved in many avian research projects. He is an avid ornithologist with over 3-decade experience. DR. PETER NUOROG (PN) has been actively engaged in biodiversity research for the last 24 years especially research on avian species. He has published over 50 journal articles on conservation, avian ecology and environment-related issues. DR. JOSEPH MWANGI (JM) is currently the Kenya country Coordinator for the African Crane Conservation Program, a partnership program between the Endangered Wildlife Trust (EWT) and International Crane Foundation (ICF). He spearheads coordination and implementation of the Kenya Crane and Wetland Conservation Project that works to conserve the endangered Grey Crowned Crane. WANYOIKE WAMITI (WW) is a Research Scientist at the National Museums of Kenya and a final year PhD candidate (Biology of Conservation) at the University of Nairobi conducting research on the ecology of the Endangered Grey Crowned Crane at Lake Ol' Bolossat. He has a two decades experience of Kenyan ornithology. SAMUEL BAKARI (SB) is a tropical ecologist. He holds a Master of Science degree from the University of Groningen, the Netherlands and a bachelors from the University of Nairobi. He has worked on grassland birds for over 15 years, Bakari currently works for BirdLife International in coordinating vulture conservation in Africa. DR. JOHNSTONE KIMANZI (JK) is a Spatial Ecologist interested in applying GIS and Remote Sensing tools to model complex ecological systems and solve biodiversity conservation and wildlife management problems. He is currently a Senior Lecturer and Head of the Department of Wildlife Management at the University of Eldoret, Kenya.

Author contribution: Study design (DK, MM,JK, JM, BW & PN); Data collection (DK, JM, MM, JK, BW, SB & WW); Data analysis (DK, JM, JK & MM); Manuscript write up (DK, JM, MM, JK, BW & PN).



PLATINUM
OPEN ACCESS



The Journal of Threatened Taxa (JoTT) is dedicated to building evidence for conservation globally by publishing peer-reviewed articles online every month at a reasonably rapid rate at www.threatenedtaxa.org. All articles published in JoTT are registered under [Creative Commons Attribution 4.0 International License](https://creativecommons.org/licenses/by/4.0/) unless otherwise mentioned. JoTT allows unrestricted use, reproduction, and distribution of articles in any medium by providing adequate credit to the author(s) and the source of publication.

ISSN 0974-7907 (Online) | ISSN 0974-7893 (Print)

April 2020 | Vol. 12 | No. 5 | Pages: 15535–15674

Date of Publication: 26 April 2020 (Online & Print)

DOI: 10.11609/jott.2020.12.5.15535-15674

www.threatenedtaxa.org

Article

Prey selection and food habits of the Tiger *Panthera tigris* (Mammalia: Carnivora: Felidae) in Kalakkad-Mundanthurai Tiger Reserve, southern Western Ghats, India

– Bawa Mothilal Krishnakumar, Rajarathinavelu Nagarajan & Kanagaraj Muthamizh Selvan, Pp. 15535–15546

Communications

Community-based study to demonstrate the presence and local perspectives of the Critically Endangered Chinese Pangolin *Manis pentadactyla* in Zhejiang Wuyuanling, China

– Hongying Li, Shusheng Zhang, Ji Zhang, Zupei Lei, Fangdong Zheng & Peter Daszak, Pp. 15547–15556

Field friendly method for wild feline semen cryopreservation

– Gediendson Ribeiro de Araujo, Thyara de Deco-Souza, Leticia Coelho Ferreira Bergo, Leanes Cruz da Silva, Ronaldo Gonçalves Morato, Pedro Nacib Jorge-Neto, Maitê Cardoso Coelho da Silva, Gustavo Guerino Macedo & Tarcizio Antônio Rego De Paula, Pp. 15557–15564

Habitat structure determines the abundance of the Endangered Sharpe's Longclaw *Macronyx sharpei* (Aves: Passeriformes: Motacillidae) at Timau montane grasslands in central Kenya

– Dominic Kimani, Muchane Muchai, Johnstone Kimanzi, Joseph Mwangi, Wanyoike Wamiti, Samuel Bakari, Bernhard Walter & Peter Njoroge, Pp. 15565–15571

Avifaunal diversity of some selected water bodies of Khanapur Taluka, Belagavi District, Karnataka, India

– Harsha D. Neelgund & Girish Kadadevaru, Pp. 15572–15586

Herpetofauna of Shuklaphanta National Park, Nepal

– Yam Bahadur Rawat, Santosh Bhattarai, Laxman Prasad Poudyal & Naresh Subedi, Pp. 15587–15611

Varying colour pattern, yet genetically similar: Pebble Crab *Seulocia vittata* (Stimpson, 1858) (Brachyura: Leucosiidae) from the southeastern coast of India

– Sanjeevi Prakash & Amit Kumar, Pp. 15612–15618

Grasses of Kundadri Hills in the Western Ghats of Karnataka, India

– Hanchali Udayashankar Abhijit & Yelugere Linganaik Krishnamurthy, Pp. 15619–15630

Comparative phytosociological assessment of three terrestrial ecosystems of Wayanad Wildlife Sanctuary, Kerala, India

– M. Vishnu Chandran, S. Gopakumar & Anooopa Mathews, Pp. 15631–15645

Short Communications

Piroplasmiasis in a captive Grant's Zebra *Equus quagga boehmi* (Mammalia: Perissodactyla: Equidae) - a case study

– Sarat Kumar Sahu, Niranjana Sahoo, Bijayendranath Mohanty & Debabrat Mohapatra, Pp. 15646–15650

Eurylophella karelica Tiensuu, 1935 (Insecta: Ephemeroptera: Ephemerellidae) – an additional species to the mayfly fauna of Ukraine and notes on distribution of the family in the country

– Alexander V. Martynov, Pp. 15651–15654

Some new records of katydids (Orthoptera: Tettigoniidae) from Uttar Pradesh, India

– Ramesh Singh Yadav & Dharmendra Kumar, Pp. 15655–15660

Notes

On the occurrence of Honey Badger *Mellivora capensis* (Mammalia: Carnivora: Mustelidae) in the northern Eastern Ghats of Andhra Pradesh, India

– Vikram Aditya, Yogesh Pasul & Ganesh Thyagarajan, Pp. 15661–15663

Assamese Cat Snake *Boiga quincunciata* (Wall, 1908) (Reptilia: Squamata: Colubridae) - new country record for Bhutan

– Lekey Chaida, Abhijit Das, Ugyen Tshering & Dorji Wangdi, Pp. 15664–15667

Loss of Critically Endangered Hawksbill Turtle nesting beach at EGA facility, Abu Dhabi, UAE

– D. Adhavan, Pp. 15668–15670

Meliola elaeocarpicola sp. nov. (Ascomycetes, Meliolales) from Malabar Wildlife Sanctuary in Kerala State, India

– Lini K. Mathew & Jacob Thomas, Pp. 15671–15674

Member



Publisher & Host

