

OPEN ACCESS

The Journal of Threatened Taxa is dedicated to building evidence for conservation globally by publishing peer-reviewed articles online every month at a reasonably rapid rate at www.threatenedtaxa.org. All articles published in JoTT are registered under [Creative Commons Attribution 4.0 International License](https://creativecommons.org/licenses/by/4.0/) unless otherwise mentioned. JoTT allows unrestricted use of articles in any medium, reproduction, and distribution by providing adequate credit to the authors and the source of publication.



Journal of Threatened Taxa

Building evidence for conservation globally

www.threatenedtaxa.org

ISSN 0974-7907 (Online) | ISSN 0974-7893 (Print)

SHORT COMMUNICATION

ANGIOSPERM DIVERSITY OF SONBHADRA DISTRICT, UTTAR PRADESH: A CHECKLIST

Arun Kumar Kushwaha, Lalit Mohan Tewari & Lal Babu Chaudhary

26 August 2018 | Vol. 10 | No. 9 | Pages: 12247–12269

10.11609/jott.3283.10.9.12247-12269



For Focus, Scope, Aims, Policies and Guidelines visit <http://threatenedtaxa.org/index.php/JoTT/about/editorialPolicies#custom-0>

For Article Submission Guidelines visit <http://threatenedtaxa.org/index.php/JoTT/about/submissions#onlineSubmissions>

For Policies against Scientific Misconduct visit <http://threatenedtaxa.org/index.php/JoTT/about/editorialPolicies#custom-2>

For reprints contact info@threatenedtaxa.org

Partners



صندوق محمد بن زايد
للمحافظة على
الكائنات الحية
The Mohamed bin Zayed
SPECIES CONSERVATION FUND



zooh!
ZÜRICH

Member



Publisher & Host



Threatened Taxa



ANGIOSPERM DIVERSITY OF SONBHADRA DISTRICT, UTTAR PRADESH: A CHECKLIST

Arun Kumar Kushwaha¹ , Lalit Mohan Tewari²  & Lal Babu Chaudhary³ 

^{1,3} Plant Diversity, Systematics and Herbarium Division, CSIR-National Botanical Research Institute, Rana Pratap Marg, Lucknow, Uttar Pradesh 226001, India

² Department of Botany, D.S.B. Campus, Kumaun University, Nainital, Uttarakhand 263002, India

¹ akushwaha072@gmail.com, ² l_tewari@rediffmail.com, ³ dr_lbchaudhary@rediffmail.com (corresponding author)



ISSN 0974-7907 (Online)
ISSN 0974-7893 (Print)

OPEN ACCESS



Abstract: The present study provides a taxonomic account of the angiosperms of Sonbhadra District in Uttar Pradesh. The district, which comes under the Vindhyan region of Uttar Pradesh, is one of the richest areas in the state as far as plant diversity is concerned. It is spread over about 6788km² of geographical area, which constitutes about 36% forest cover on highly undulated land. The extensive survey of the area conducted during 2011–2016, critical examination of previous collections housed at various herbaria, and review of published literature have resulted in a total of 705 species belonging to 459 genera under 110 families. Out of these, 541 species (76.73%) under 354 genera (77.12%) and 89 families (80.90%) belong to dicots, and 164 species (23.26%) under 105 genera (23.26%) and 21 families (19.09%) to monocots. The present enumeration of the species also includes about 78 species cultivated in the area for various purposes. Fabaceae (110 spp.) comprises of the maximum number of species, followed by Poaceae (89 spp.), Asteraceae (38 spp.), Cyperaceae (33 spp.), and Malvaceae (33 spp.). Some of the largest genera in the area are *Cyperus* (14 spp.), *Ipomoea* (9 spp.), *Solanum* (9 spp.), *Ficus* (9 spp.), *Crotalaria* (7 spp.), *Desmodium* (7 spp.), *Bauhinia* (6 spp.), *Hibiscus* (6 spp.), *Fimbristylis* (6 spp.), *Acacia* (5 spp.), etc. The entire forest is chiefly dominated by trees such as *Acacia catechu* (L.f.) Willd., *Boswellia serrata* Roxb. ex Colebr., *Butea monosperma* (Lam.) Taub., *Hardwickia binata* Roxb., and *Shorea robusta* Gaertn.

Keywords: Floristic diversity, Vindhyan region, Sonbhadra District, Uttar Pradesh.

The floristic account provides lots of information of plant wealth of an area, which may be beneficial for university students, botanists, researchers, NGOs, naturalists, environmental engineers, forest managers, conservation biologists, and policy makers. Knowledge of floristic composition and structure of forest is also useful in identifying ecologically and economically important plants, analysing their diversities, and protecting threatened plants (Addo-Fordjour et al. 2009). In the past, many important floristic accounts have been published for several states, districts, and biogeographic regions of India and abroad. In addition to general flora of Uttar Pradesh (Duthie 1903–1929; Kanjilal 1966; Rau 1969; Uniyal et al. 1999; Chaudhary et al. 2016), several works related to different districts, national parks, and sanctuaries have also been produced by many (Kanjilal 1933; Srivastava 1938; Singh 1969; Srivastava 1976; Sharma & Pandey 1984; Sharma & Dhakre 1995; Verma & Ranjan 1995; Singh 1997; Saini

DOI: <https://doi.org/10.11609/jott.3283.10.9.12247-12269>

Editor: Aparna Watve, Pune, India.

Date of publication: 26 August 2018 (online & print)

Manuscript details: Ms # 3283 | Received 03 January 2017 | Final received 25 July 2018 | Finally accepted 30 July 2018

Citation: Kushwaha, A.K., L.M. Tewari & L.B. Chaudhary (2018). Angiosperm diversity of Sonbhadra District, Uttar Pradesh: a checklist. *Journal of Threatened Taxa* 10(9): 12247–12269; <https://doi.org/10.11609/jott.3283.10.9.12247-12269>

Copyright: © Kushwaha et al. 2018. Creative Commons Attribution 4.0 International License. JoTT allows unrestricted use of this article in any medium, reproduction and distribution by providing adequate credit to the authors and the source of publication.

Funding: DST, Govt. of India, New Delhi.

Competing interests: The author declares no competing interests.

Acknowledgements: The Director, CSIR-National Botanical Research Institute, Lucknow, India is highly acknowledged for providing facilities. The authors are also thankful to DST, Govt. of India, New Delhi for the financial support. The thanks are also due to the in-charge of herbaria mentioned in the work for granting permission for herbarium consultation. The PCCF (Wildlife), Uttar Pradesh and forest field staffs are also acknowledged for their hospitality and assistance provided during the field work.



2005; Singh & Khanuja 2006; Kumar et al. 2015). The floristic account of Sonbhadra District of Uttar Pradesh, however, is still unexplored in spite of its rich diversity. The production of state flora will be easier, once all the district floras are worked out systematically. Hence, there is a need for proper inventory and documentation of all plants available in Sonbhadra District with their up to date taxonomic information. Since the area is very rich in minerals and forest resources, many industries and factories of different kinds have been set up here. Therefore, the present study will also be very important for a comparative study of the plants of the area in future and also to examine the effects of industrial pollutants on them.

Although the district has not been thoroughly inventoried earlier, the reference on the plants of the study area is available in Bhattacharyya (1963, 1964) and Srivastava (1955) wherein the plants of erstwhile Mirzapur District have been dealt with. In these studies, about 460 species have been listed including about 130 species from the study area. In addition, a few scattered works chiefly pertaining to ethnobotanical and medicinal plants have been carried out in the area (Singh et al. 2002; Chaudhary 2010; Singh et al. 2010; Singh et al. 2012; Singh & Dubey 2012; Mishra et al. 2012). Recently, Kushwaha et al. (2016 a, b) have thoroughly studied the family Cucurbitaceae of the area and have also presented a preliminary overview of angiospermic plants. Hence, the present work is the first study of its kind from the study area after its recognition as a district.

MATERIALS AND METHODS

In this study, 12 field tours in different seasons were conducted between 2011–2016 to survey the area. The plant materials were collected either in flowering or fruiting or in both stages with detailed information such as habit, habitat, colour of flowers and fruits, shape and size of trees, nature of bark of trees, GPS information, conservation status, etc. The herbarium specimens were prepared following the standard procedure outlined by Lawrence (1951) and Jain & Rao (1977). The identification of species was done with the help of different floras and important taxonomic works (Hooker 1872–1897; Duthie 1903–1929; Brandis 1906; Singh 1997) and also after matching with the authentic specimens housed at various Indian herbaria such as Botanical Survey of India, Allahabad (BSA), Botanical Survey of India, Dehra Dun (BSD), Botanical Survey of India, Kolkata (CAL), Forest Research Institute, Dehra Dun (DD), and National Botanical Research Institute, Lucknow (LWG). All specimens collected in the present

study have been deposited at LWG for future records. In the present treatment, each species was furnished with the correct recent name following websites such as The International Plant Names Index (IPNI), Germplasm Resources Information Network (GRIN), International Legume Database and Information Service (ILDIS), The Plantlist, Wikipedia, and Tropicos, along with habit, distribution and reference to voucher specimens. The families, genera, and species within the genus have been arranged alphabetically in the list. All photographs included in the study have been taken by first author (AKK).

Study Area

Uttar Pradesh, one of the largest states of India with an area of about 240,928 km², has been divided into 75 districts. Its forest cover, however, is about 16,583 km², which is only 6.88% of its total geographical area (Forest Survey of India, 2011). In the present study, Sonbhadra District was selected for the floristic study to know the plant wealth of the area (Fig. 1; Image 1). Sonbhadra District was carved out from the district Mirzapur on 4 March 1989. It is the second largest district of the state comprising of about 6788 km² geographical area. It lies between 23° 51'54" N–24° 46'18" N and 82° 40'24" E–83°33'15" E at elevations ranging from 315–485 m. The temperature of the area varies from 32°C–42°C in the summer and 2°C–15°C in the winter. This district is situated in the extreme southeast of the state, and is bounded by Mirzapur District in the northwest, Chandauli District in the north, Kaimur and Rohtas districts of Bihar in the northeast, Garhwa District of Jharkhand State in the east, Koriya and Surguja districts of Chhattisgarh State in the south, and Singrauli District of Madhya Pradesh in the west. The district occupies 36.79% (i.e., 3,782.86 km²) forest cover of the total geographical area of the state. The topography of the area is uneven due to the presence of hillocks. The area that comes under the Vindhyan plateau of the state has tropical dry deciduous forest (Singh & Dubey 2012).

RESULTS AND DISCUSSION

The whole of the area is covered with natural scrubby jungle and thick forests. Almost the entire plateau exhibits a uniform horizontal stratification of rocks. The top of the plateau is unsuitable for the growth of broad-leaved plants and, is represented by uniform scrubby dry vegetation. The broad-leaved plants are generally seen on the slopes of the plateau. Overall, the entire forest is mixed dry deciduous, but evergreen trees are frequently seen in ravines. The data collected from

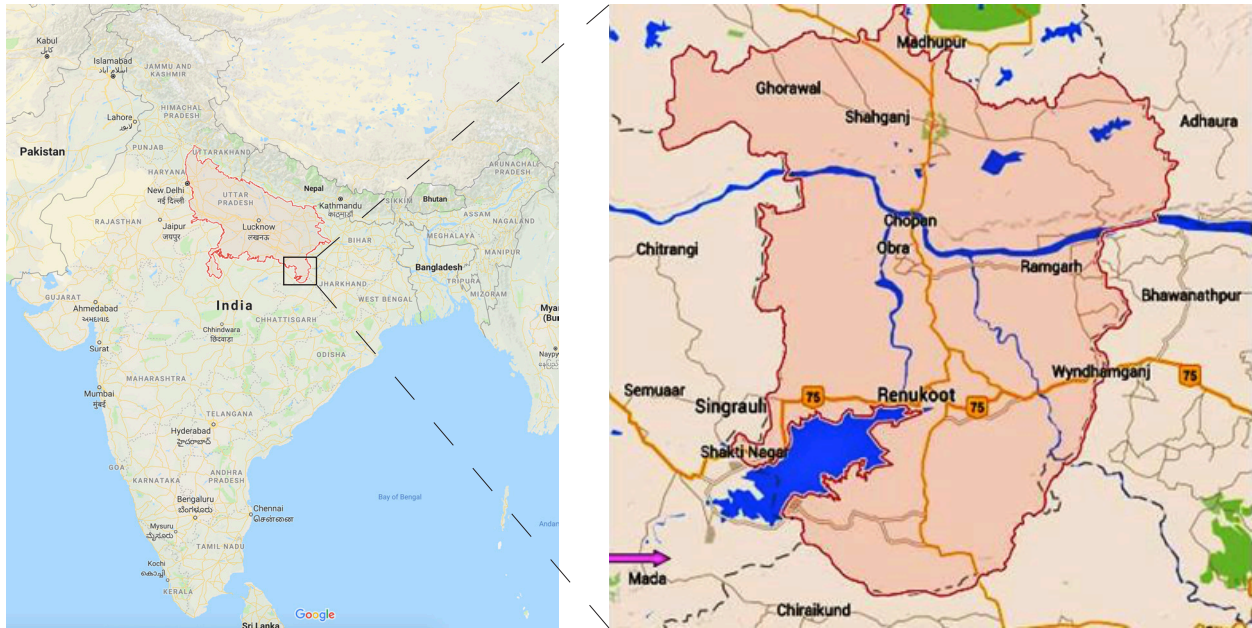


Figure 1. Study site: Sonbhadra District Uttar Pradesh. Source: India map from Google and Sonbhadra map from: <https://www.google.co.in/maps/place/Sonbhadra,+Uttar+Pradesh>.



Image 1. General views of the Sonbhadra District (a - hillock; b - miscellaneous forest; c - river; d - deciduous forest; e - lake; f - *Hardwickia binata* Roxb. forest).

field and herbarium studies reveal that the entire area contains about 705 species under 459 genera and 110 families including 78 cultivated ones that have been planted in the area for different purposes (Table 1; Images 2–3). Out of these, 541 species (76.73%) under 354 genera (77.12%) and 89 families (80.90%) belong to dicots and 164 species (23.26%) under 105 genera

(22.87%) and 21 families (19.09%) to monocots (Fig. 2). The family Fabaceae has the maximum number of species (52 Genera, 110 species), followed by Poaceae (63 Genera, 89 species), Asteraceae (32 Genera, 38 species), Malvaceae (15 Genera, 33 species), Cyperaceae (9 Genera, 33 species), Cucurbitaceae (11 Genera, 20 species), Acanthaceae (11 Genera, 17 species),

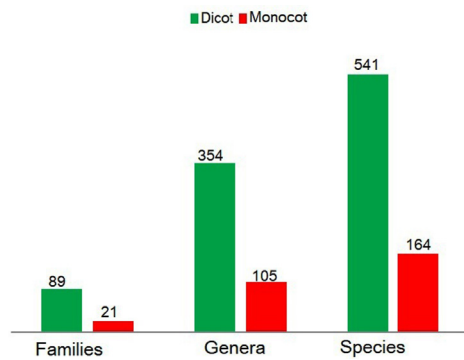


Figure 2. Analysis of Dicot and Monocot taxa.

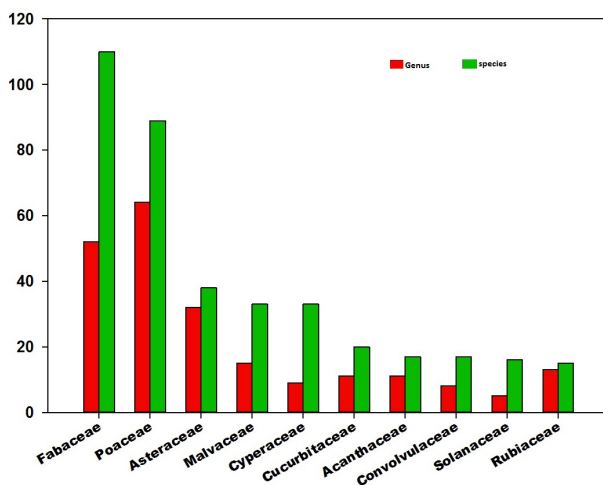


Figure 3. Largest families.

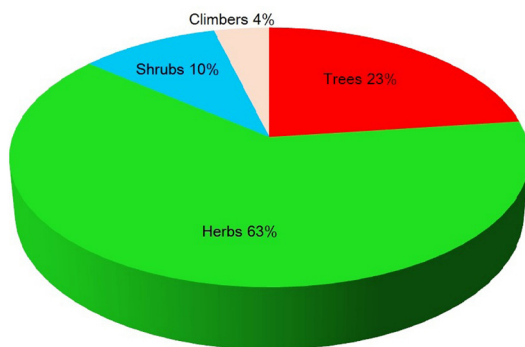


Figure 4. Different life forms of species.

Convolvulaceae (8 Genera, 17 species), Solanaceae (5 Genera, 16 species), and Rubiaceae (13 Genera, 15 species) (Fig. 3). Some of the dominant genera in the forest are *Cyperus* (14 spp.), *Ipomoea* (9 spp.), *Solanum* (9 spp.), *Ficus* (9 spp.), *Crotalaria* (7 spp.), *Desmodium* (7 spp.), *Bauhinia* (6 spp.), *Hibiscus* (6 spp.), *Fimbristylis* (6 spp.), *Acacia* (5 spp.), etc. Among all plants, 443 species

(62.70%) are herbs, 163 species (23.12%) are trees, 75 species (10.21 %) are shrubs, and 29 species (3.97 %) are climbers (Fig. 4).

According to a revised classification of forest type in India by Champion & Seth (1968), the forest type of Sonbhadra District is tropical dry deciduous. The whole area of the district has an interesting diversity of flora and vegetation due to variable plains, slopes, hills, and climate, represented by dry deciduous vegetation, natural scrub jungle, patches of grasses, and thick forest. The whole area of the district is covered with rich plant diversity with trees at the top layer, shrubs at the middle layer, and herbs, climbers, and twiners at the ground level.

REFERENCES

- Ado-Fordjour, P., S. Obeng, A.K. Anning & M.G. Addo (2009). Floristic composition, structure and natural regeneration in a moist semi-deciduous forest following anthropogenic disturbances and plant invasion. *International Journal of Biodiversity and Conservation* 1(2): 21–37.
- Bhattacharyya, U.C. (1963). A contribution to the flora of Mirzapur-I: Some new records for the district and for the Upper Gangetic Plain. *The Bulletin of the Botanical Survey of India*, Dehra Dun 5(1): 59–62.
- Bhattacharyya, U.C. (1964). A contribution to the flora of Mirzapur-II. *The Bulletin of the Botanical Survey of India*, Dehra Dun 6(2–4): 191–210.
- Brandis, D. (1906). *Indian Trees: An Account of Trees, Shrubs, Woody Climbers, Bamboos and Palms Indigenous or Commonly Cultivated in the British Indian Empire*. Archibald Constable & Co. Ltd, London, xxxiv+767pp; <http://dx.doi.org/10.5962/bhl.title.50463>
- Champion, S.H., & Seth, S.K. (1968). A revised survey of the forest types of India. Manager of Publications, Delhi, 404pp.
- Chaudhary, L.B., A.K. Kushwaha & O. Bajpai (2016). *Trees of Uttar Pradesh (Part 1)*. Bennett, Coleman & Co. Ltd., Lucknow, India, 364pp.
- Chaudhary, R.S. (2010). Taxa of family Fabaceae: A potential of local medicinal values in Vindhya Region Uttar Pradesh, India. *International Journal of Pharma and Bio Sciences* 1(4): B 46–53.
- Duthie, J.F. (1903–1929). *Flora of upper Gangetic plain, and of the adjacent Siwalik and sub-Himalayan tracts Vol. 1–3*. Superintendent of Government Printing, Calcutta, India. Vol-1 500pp, Vol-2 266pp, Vol-3 283pp.
- Forest Survey of India (2011). (http://fsi.nic.in/cover_2011/chapter2.pdf) (accessed: 24 July 2018).
- Hooker, J.D. (1872–1897). *The Flora of British India Vol. 1–7*. Lovell Reeve & Co., London Vol-1 740pp, Vol-2 792pp, Vol-3 712pp, Vol-4 740pp, Vol-5 910pp, Vol-6 792pp, Vol-7 842pp.
- Jain, S.K. & R.R. Rao (1977). *A handbook of field and herbarium methods*. Today & Tomorrow's Printers & Publishers, New Delhi, 107pp.
- Kanjilal, P.C. (1933). *Forest flora of Pilibhit, Oudh, Gorakhpur and Bundelkhand*. Narendra Publishing House, Delhi, 427pp.
- Kanjilal, P.C. (1966). *A Forest Flora for the Plains of Uttar Pradesh-Part II & III*. Superintendent Printing, Lucknow, 723 pp.
- Kushwaha, A.K., O. Bajpai, A.K. Srivastava, L.M. Tiwari & L.B. Chaudhary (2016a). Cucurbitaceae of Sonbhadra district, Uttar Pradesh: Diversity and Uses, pp. 195–206. In: Chourasia, H.K. (ed.). *Conservation of Medicinal plants: Conventional and modern Approaches*. Omega Publications, New Delhi, India, 414pp.
- Kushwaha, A.K., N. Singh, L.M. Tiwari & L.B. Chaudhary (2016b). A preliminary analysis of angiospermic flora of Sonbhadra District,

Table 1. List of the plants of Sonbhadra District.

Family	Taxa	Growth form	Remarks	Collection reference
	DICOT			
Acanthaceae	<i>Adhatoda zeylanica</i> Medik.	Shrub	Native	Kushwaha 304140 (LWG)
	<i>Andrographis echiioides</i> (L.) Nees	Herb	Native	Panigrahi 12006 (BSA)
	<i>Andrographis paniculata</i> (Burm. f.) Wall. ex Nees	Herb	Native	Kushwaha 304101 (LWG)
	<i>Barleria cristata</i> L.	Shrub	Native	Kushwaha 254593 (LWG)
	<i>Barleria prionitis</i> L.	Shrub	Native	Kushwaha 254285 (LWG)
	<i>Dipteracanthus prostratus</i> (Poir.) Nees	Herb	Native	Panigrahi 12221 (BSA)
	<i>Elytraria acaulis</i> (L.f.) Lindau	Herb	Native	Kushwaha 304137 (LWG)
	<i>Hemigraphis hirta</i> (Vahl) T.Anderson	Herb	Native	Kushwaha 304195 (LWG)
	<i>Hygrophila auriculata</i> (Schumach.) Heine	Herb	Native	Panigrahi 9676 (BSA)
	<i>Hygrophila erecta</i> (Burm.f.) Hochr.	Herb	Native	Panigrahi 2059 (BSA)
	<i>Hygrophila polysperma</i> (Roxb.) T.Anderson	Herb	Native	Panigrahi 13417 (BSA)
	<i>Justicia diffusa</i> Willd.	Herb	Native	Panigrahi 20504 (BSA)
	<i>Justicia prostrata</i> Schldl. ex Nees	Herb	Native	Panigrahi 8451 (BSA)
	<i>Justicia quinqueangularis</i> K.D.Koenig ex Roxb.	Herb	Native	Panigrahi 2247 (BSA)
	<i>Peristrophe bicalyculata</i> (Retz.) Nees	Herb	Native	Kushwaha 259263(LWG)
	<i>Ruellia suffruticosa</i> Roxb.	Shrub	Native	Mishra 9935 (BSA)
	<i>Rungia pectinata</i> (L.) Nees	Herb	Native	Kushwaha 259237(LWG)
Aizoaceae	<i>Glinus oppositifolius</i> (L.) Aug. DC.	Herb	Native	Singh et al. EBH 249 (LWG)
	<i>Trianthema portulacastrum</i> L	Herb	Native	Kushwaha 304102 (LWG)
Ampelidaceae	<i>Ampelocissus latifolia</i> (Roxb.) Planch.	Climber	Native	Mishra 9736 (BSA)
Amranthaceae	<i>Achyranthes aspera</i> L.	Herb	Native	Kushwaha 264710 (LWG)
	<i>Aerva lanata</i> (L.) Juss.	Herb	Native	Kushwaha 254359 (LWG)
	<i>Allmania nodiflora</i> (L.) R.Br. ex Wight	Herb	Native	Panigrahi 12590 (BSA)
	<i>Alternanthera ficoidea</i> (L.) Sm.	Herb	Native	Kushwaha 254289 (LWG)
	<i>Alternanthera paronychioides</i> A.St.-Hil.	Herb	Alien	Kushwaha 254690 (LWG)
	<i>Alternanthera sessilis</i> (L.) R.Br. ex DC.	Herb	Native	Kushwaha 259235 (LWG)
	<i>Amaranthus spinosus</i> L.	Herb	Native	Kushwaha 254691 (LWG)
	<i>Amaranthus tricolor</i> L.	Herb	Native	Panigrahi 12631 (BSA)
	<i>Amaranthus viridis</i> L.	Herb	Native	Kushwaha 254700 (LWG)
	<i>Celosia argentea</i> L.	Herb	Alien	Kushwaha 245695 (LWG)
	<i>Digera muricata</i> (L.) Mart.	Herb	Alien	Kushwaha 245692 (LWG)
	<i>Nothosaerva brachiata</i> (L.) Wight	Herb	Native	Kushwaha 304104 (LWG)
Anacardiaceae	<i>Buchanania cochinchinensis</i> (Lour.) M.R. Almeida	Tree	Native	Kushwaha 259255 (LWG)
	<i>Lannea coromandelica</i> (Houtt.) Merr.	Tree	Native	Kushwaha 259825 (LWG)
	<i>Mangifera indica</i> L.	Tree	Cultivated	Kushwaha 259801 (LWG)
	<i>Semecarpus anacardium</i> L.f.	Tree	Native	Kushwaha 259810 (LWG)
Annonaceae	<i>Annona squamosa</i> L.	Tree	Cultivated	Kushwaha 254696 (LWG)
	<i>Miliusa tomentosa</i> (Roxb.) Sinclair	Tree	Native	Kushwaha 259852 (LWG)
	<i>Polyalthia longifolia</i> (Sonn.) Thw.	Tree	Cultivated	Kushwaha 254699 (LWG)
	<i>Polyalthia suberosa</i> (Roxb.) Thwaites	Tree	Native	Kushwaha 259881 (LWG)
Apiaceae	<i>Anethum graveolens</i> L.	Herb	Cultivated	Singh & Party EBH489 (LWG)
	<i>Centella asiatica</i> (L.) Urban	Herb	Native	Kushwaha 259883 (LWG)
	<i>Coriandrum sativum</i> L.	Herb	Cultivated	Kushwaha 259878 (LWG)

Family	Taxa	Growth form	Remarks	Collection reference
Apocynaceae	<i>Alstonia scholaris</i> (L.) R. Br.	Tree	Cultivated	Kushwaha 254697 (LWG)
	<i>Calotropis gigantea</i> (L.) R. Br.	Small tree	Native	Kushwaha 304106 (LWG)
	<i>Calotropis procera</i> (Aiton) Dryand.	Shrub	Native	Kushwaha 259285 (LWG)
	<i>Carissa carandas</i> L.	Small tree	Cultivated	Kushwaha 259812 (LWG)
	<i>Cascabela thevetia</i> (L.) Lippold	Tree	Cultivated	Kushwaha 259819 (LWG)
	<i>Carissa spinarum</i> L.	Shrub	Native	Kushwaha 254363 (LWG)
	<i>Catharanthus pusillus</i> (Murray) G.Don	Herb	Native	Panigrahi 12587 (BSA)
	<i>Holarrhena pubescens</i> Wall. ex G.Don	Tree	Native	Kushwaha 259298 (LWG)
	<i>Ichnocarpus frutescens</i> (L.) W.T.Aiton	Climber	Native	Kushwaha 259849 (LWG)
	<i>Oxystelma esculentum</i> (L.f.) Sm.	Climber	Native	Kushwaha 304108 (LWG)
	<i>Tabernaemontana divaricata</i> (L.) R.Br. ex Roem. & Schult	Tree	Cultivated	Kushwaha 259824 (LWG)
	<i>Wrightia arborea</i> (Dennst.) Mabblerley	Small tree	Native	Kushwaha 304118 (LWG)
	<i>Wrightia tinctoria</i> R.Br.	Tree	Native	Kushwaha 254509 (LWG)
	<i>Plumeria rubra</i> L.	Tree	Cultivated	Kushwaha 304122 (LWG)
	<i>Plumeria alba</i> L.	Small tree	Cultivated	Kushwaha 304127 (LWG)
	Aristolochiaceae	<i>Aristolochia indica</i> L.	Herb	Native
Asclepiadaceae	<i>Ceropegia hirsuta</i> Wight & Arn.	Climber	Native	Panigrahi 12577 (BSA)
	<i>Cryptolepis dubia</i> (Burm.f.) M.R.Almeida	Climber	Native	Panigrahi 9971 (BSA)
	<i>Gymnema rivulare</i> Schltr.	Climber	Native	Panigrahi 9660 (BSA)
	<i>Hemidesmus indicus</i> (L.) R. Br. ex Schult.	Herb	Native	Singh & Party EBH735 (LWG)
	<i>Marsdenia tenacissima</i> (Roxb.) Moon	Woody climber	Native	Mishra 9960 (BSA)
	<i>Telosma pallida</i> (Roxb.) W. G. Craib	Shrub	Native	Panigrahi 12380 (BSA)
Asteraceae	<i>Acanthospermum hispidum</i> DC.	Herb	Alien	Panigrahi 12329 (BSA)
	<i>Acilepis aspera</i> (Buch.-Ham.) H.Rob.	Herb	Native	Panigrahi 12083 (BSA)
	<i>Acmella calva</i> (DC.) Jansen	Herb	Native	Kushwaha 304197 (LWG)
	<i>Ageratum conyzoides</i> (L.) L.	Herb	Alien	Kushwaha 304198 (LWG)
	<i>Artemisia nilagirica</i> (C.B.Clarke) Pamp.	Herb	Native	Panigrahi 12422 (BSA)
	<i>Bidens pilosa</i> L.	Herb	Alien	Panigrahi 1090 (BSA)
	<i>Blainvillea acmella</i> (L.) Philipson	Herb	Alien	Kushwaha 259259 (LWG)
	<i>Blumea lacera</i> DC.	Herb	Alien	Panigrahi 13707 (BSA)
	<i>Blumea axillaris</i> (Lam.) DC.	Herb	Native	Kushwaha 259817 (LWG)
	<i>Blumea fistulosa</i> (Roxb.) Kurz	Herb	Native	Panigrahi 12051 (BSA)
	<i>Blumea laciniata</i> (Wall. ex Roxb.) DC.	Herb	Native	Panigrahi 13738 (BSA)
	<i>Blumea oxyodonta</i> DC.	Herb	Native	Kushwaha 304199 (LWG)
	<i>Caesulia axillaris</i> Roxb.	Herb	Native	Panigrahi 12559 (BSA)
	<i>Carthamus oxyacantha</i> M.Bieb.	Herb	Native	Panigrahi 12027 (BSA)
	<i>Chrysanthellum indicum</i> DC.	Herb	Native	Kushwaha 304191 (LWG)
	<i>Conyza leucantha</i> (D.Don) Ludlow & P.H.Raven	Herb	Native	Panigrahi 13644 (BSA)
	<i>Cyanthillium cinereum</i> (L.) H.Rob.	Herb	Native	Panigrahi 12065 (BSA)
	<i>Cyathocline purpurea</i> (Buch.-Ham. ex D.Don) Kuntze	Herb	Native	Kushwaha 259815 (LWG)
	<i>Echinops echinatus</i> Roxb.	Herb	Alien	Kushwaha 259286 (LWG)
	<i>Eclipta prostrata</i> L.	Herb	Alien	Kushwaha 254361 (LWG)
	<i>Elephantopus scaber</i> L.	Herb	Native	Kushwaha 264709 (LWG)
	<i>Emilia sonchifolia</i> (L.) DC. ex DC.	Herb	Alien	Panigrahi 9692 (BSA)
	<i>Gnaphalium polycaulon</i> Pers.	Herb	Alien	Kushwaha 254290 (LWG)

Family	Taxa	Growth form	Remarks	Collection reference
	<i>Gnaphalium indicum</i> L.	Herb	Native	Koul & Party 47388 (LWG)
	<i>Grangea maderaspatana</i> (L.) Poir.	Herb	Alien	Panigrahi 12623 (BSA)
	<i>Helichrysum indicum</i> (L.) Grierson	Herb	Native	Panigrahi 13428 (BSA)
	<i>Ixeris polycephala</i> Cass.	Herb	Native	Srivastava & Party (LWG)
	<i>Launaea acaulis</i> (Roxb.) Bab. ex Kerr.	Herb	Native	Kushwaha 304192 (LWG)
	<i>Launaea procumbens</i> (Roxb.) Ramaya & Rajgopal	Herb	Native	Kushwaha 304196 (LWG)
	<i>Parthenium hysterophorus</i> L.	Herb	Alien	Kushwaha 254364 (LWG)
	<i>Pentanema indicum</i> (L.) Ling	Herb	Native	Panigrahi 9614 (BSA)
	<i>Pluchea indica</i> (L.) Less.	Herb	Native	Kushwaha 259838 (LWG)
	<i>Pulicaria crispa</i> Sch.Bip.	Herb	Native	Panigrahi 9621 (BSA)
	<i>Sonchus asper</i> (L.) Hill	Herb	Alien	Kushwaha 254279 (LWG)
	<i>Sphaeranthus indicus</i> L.	Herb	Native	Kushwaha 259805 (LWG)
	<i>Tagetes erecta</i> L.	Herb	Native	Singh & Party EBH 487 (LWG)
	<i>Tridax procumbens</i> (L.) L.	Herb	Alien	Kushwaha 254597 (LWG)
	<i>Xanthium strumarium</i> L.	Herb	Alien	Kushwaha 259773 (LWG)
Basellaceae	<i>Basella alba</i> L.	Climber	Native	Kushwaha 304200 (LWG)
Bignoniaceae	<i>Handroanthus impetiginosus</i> (Mart. ex DC.) Mattos	Tree	Cultivated	Kushwaha 254292 (LWG)
	<i>Fernandoa adenophylla</i> (Wall. ex G. Don) Steenis	Tree	Cultivated	Kushwaha 254694 (LWG)
	<i>Jacaranda mimosifolia</i> D. Don	Tree	Cultivated	Kushwaha 259867 (LWG)
	<i>Kigelia africana</i> (Lam.) Benth.	Tree	Cultivated	Kushwaha 254293 (LWG)
	<i>Tabebuia rosea</i> DC.	Tree	Cultivated	Kushwaha 259867 (LWG)
	<i>Tecoma stans</i> (L.) Juss. ex Kunth	Tree	Cultivated	Kushwaha 259820 (LWG)
Bombacaceae	<i>Bombax ceiba</i> L.	Tree	Native	Kushwaha 259807 (LWG)
Boraginaceae	<i>Cordia dichotoma</i> G. Forst.	Tree	Native	Kushwaha 259761 (LWG)
	<i>Ehretia laevis</i> Roxb.	Tree	Native	Kushwaha 259813 (LWG)
	<i>Heliotropium indicum</i> L.	Herb	Native	Kushwaha 259764 (LWG)
	<i>Heliotropium ovalifolium</i> Forssk.	Herb	Native	Mishra 9798 (BSA)
	<i>Heliotropium supinum</i> L.	Herb	Native	Panigrahi 9631 (BSA)
	<i>Trichodesma indicum</i> (L.) Lehm.	Herb	Native	Kushwaha 259808 (LWG)
Brassicaceae	<i>Brassica nigra</i> (L.) K. Koch	Shrub	Cultivated	Kushwaha 259766 (LWG)
	<i>Brassica rapa</i> L. subsp. <i>campestris</i> (L.) Clapham	Herb	Cultivated	Kushwaha 254264 (LWG)
	<i>Eruca vesicari</i> (L.) Cav.	Herb	Native	Panigrahi 13911 (LWG)
	<i>Raphanus sativus</i> L.	Herb	Cultivated	Kushwaha 254266 (LWG)
Burseraceae	<i>Boswellia serrata</i> Roxb. ex Colebr.	Tree	Native	Kushwaha 259773 (LWG)
Caryophyllaceae	<i>Polycarpaea corymbosa</i> (L.) Lam.	Herb	Native	Panigrahi 2220 (BSA)
	<i>Polycarpon prostratum</i> (Forssk.) Asch. & Schweinf.	Herb	Native	Mishra 9807 (BSA)
	<i>Spergula arvensis</i> L.	Herb	Native	Panigrahi 12630 (BSA)
	<i>Vaccaria hispanica</i> (Mill.) Rauschert	Herb	Native	Kushwaha 259767 (LWG)
Cactaceae	<i>Opuntia dillenii</i> (Ker Gawl.) Haw.	Shrub	Native	Singh & Saha EBH 585 (LWG)
	<i>Opuntia cochenillifera</i> (L.) Mill.	Shrub	Native	Kushwaha 254267 (LWG)
	<i>Opuntia stricta</i> (Haw.) Haw.	Shrub	Alien	Kushwaha 254293 (LWG)
Campanulaceae	<i>Lobelia alsinoides</i> Lam.	Herb	Native	Kushwaha 259768 (LWG)
Cannabaceae	<i>Cannabis sativa</i> L.	Shrub	Native	Kushwaha 254269 (LWG)
	<i>Celtis australis</i> L.	Tree	Native	Kushwaha 259769 (LWG)
	<i>Celtis tetrandra</i> Roxb.	Tree	Native	Kushwaha 254272 (LWG)

Family	Taxa	Growth form	Remarks	Collection reference
	<i>Trema orientalis</i> (L.) Blume	Tree	Native	Panigrahi & Prasad 2695 (BSA)
Capparidaceae	<i>Capparis zeylanica</i> L.	Shrub	Native	Kushwaha 259809 (LWG)
Casuarinaceae	<i>Casuarina equisetifolia</i> L.	Tree	Native	Kushwaha 259882 (LWG)
Celastraceae	<i>Cassine glauca</i> (Rottb.) Kuntze	Tree	Native	Panigrahi 13648 (BSA)
	<i>Celastrus paniculatus</i> Willd.	Shrub	Native	Singh & Party 9336 (LWG)
Ceratophyllaceae	<i>Ceratophyllum demersum</i> L.	Herb	Native	Kushwaha 259770 (LWG)
Chenopodiaceae	<i>Chenopodium murale</i> L.	Herb	Native	Kushwaha 254273 (LWG)
	<i>Chenopodium album</i> L.	Herb	Native	Kushwaha 259771 (LWG)
	<i>Dysphania ambrosioides</i> (L.) Mosyakin & Clemants	Herb	Native	Kushwaha 254265 (LWG)
Cleomaceae	<i>Cleome gynandra</i> L.	Herb	Alien	Panigrahi 13574 (BSA)
	<i>Cleome viscosa</i> L.	Herb	Alien	Panigrahi 13724 (BSA)
Combretaceae	<i>Anogeissus acuminata</i> (Roxb. ex DC.) Wall. ex Guillem. & Perr.	Tree	Native	Kushwaha 254326 (LWG)
	<i>Anogeissus latifolia</i> (Roxb. ex DC.) Wall. ex Guillem. & Perr.	Tree	Native	Kushwaha 254510 (LWG)
	<i>Terminalia elliptica</i> Willd.	Tree	Native	Kushwaha 254328 (LWG)
	<i>Terminalia arjuna</i> (Roxb. ex DC.) Wight & Arn.	Tree	Native	Kushwaha 254457 (LWG)
	<i>Terminalia bellirica</i> (Gaertn.) Roxb.	Tree	Native	Kushwaha 254475 (LWG)
Convolvulaceae	<i>Convolvulus arvensis</i> L.	Herb	Native	Kushwaha 259292 (LWG)
	<i>Cuscuta reflexa</i> Roxb.	Climber	Alien	Kushwaha 254270 (LWG)
	<i>Erycibe paniculata</i> Roxb.	Woody climber	Native	Panigrahi 2260 (BSA)
	<i>Evolvulus alsinoides</i> (L.) L.	Herb	Native	Mishra 9794 (BSA)
	<i>Evolvulus nummularius</i> (L.) L.	Herb	Alien	Kushwaha 259848 (LWG)
	<i>Ipomoea aquatica</i> Forssk.	Herb	Native	Panigrahi 2240 (BSA)
	<i>Ipomoea batatas</i> (L.) Lam.	Climber	Cultivated	Kushwaha 259772 (LWG)
	<i>Ipomoea cairica</i> (L.) Sweet	Climber	Native	Kushwaha 259291 (LWG)
	<i>Ipomoea carnea</i> Jacq.	Shrub	Alien	Kushwaha 254356 (LWG)
	<i>Ipomoea dichroa</i> Choisy	Climber	Native	Panigrahi 12537 (BSA)
	<i>Ipomoea nil</i> (L.) Roth	Climber	Native	Panigrahi 12382 (BSA)
	<i>Ipomoea obscura</i> (L.) Ker Gawl.	Herb	Alien	Kushwaha 254271 (LWG)
	<i>Ipomoea pes-tigridis</i> L.	Herb	Alien	Kushwaha 259775 (LWG)
	<i>Ipomoea quamoclit</i> L.	Herb	Alien	Kushwaha 254277 (LWG)
	<i>Merremia hederacea</i> (Burm. f.) Hallier f.	Herb	Native	Kushwaha 259781 (LWG)
	<i>Operculina turpethum</i> (L.) Silva Manso	Climber	Native	Kushwaha 254278 (LWG)
	<i>Porana paniculata</i> Roxb.	Climber	Native	Mishra 2237 (BSA)
Cornaceae	<i>Alangium salviifolium</i> (L.f.) Wangerin	Tree	Native	Kushwaha 254274 (LWG)
Cucurbitaceae	<i>Benincasa hispida</i> (Thunb.) Cogn.	Climber	Cultivated	Kushwaha 254303 (LWG)
	<i>Cayaponia laciniata</i> (L.) C. Jeffrey	Climber	Native	Kushwaha 254396 (LWG)
	<i>Citrullus colocynthis</i> (L.) Schrad.	Herb	Native	Kushwaha 259885 (LWG)
	<i>Citrullus lanatus</i> (Thunb.) Matsumara & Nakai	Herb	Cultivated	Kushwaha 254445 (LWG)
	<i>Coccinia grandis</i> (L.) Voigt	Herb	Native	Kushwaha 259880 (LWG)
	<i>Cucumis sativus</i> L.	Herb	Native	Kushwaha 254302 (LWG)
	<i>Cucumis melo</i> L.	Herb	Cultivated	Kushwaha 254423 (LWG)
	<i>Cucumis melo</i> L. subsp. <i>agrestis</i> (Naudin) Pangalo	Herb	Cultivated	Kushwaha 259273 (LWG)
	<i>Cucurbita maxima</i> Duch.	Herb	Cultivated	Kushwaha 254596 (LWG)
	<i>Diplocyclos palmatus</i> (L.) C. Jeffrey	Herb	Native	Kushwaha 254396 (LWG)
	<i>Lagenaria siceraria</i> (Molina) Standl.	Herb	Cultivated	Kushwaha 254280 (LWG)

Family	Taxa	Growth form	Remarks	Collection reference
	<i>Luffa hermaphrodita</i> Singh & Bandhari	Herb	Cultivated	Kushwaha 254431 (LWG)
	<i>Luffa acutangula</i> (L.) Roxb.	Herb	Cultivated	Kushwaha 254320 (LWG)
	<i>Luffa cylindrica</i> (L.) M.Roem.	Herb	Cultivated	Kushwaha 259802 (LWG)
	<i>Momordica charantia</i> L.	Herb	Cultivated	Kushwaha 254433 (LWG)
	<i>Momordica dioica</i> Roxb. ex Willd.	Herb	Native	Kushwaha 254304 (LWG)
	<i>Mukia maderaspatana</i> (L.) M.Roem.	Herb	Cultivated	Kushwaha 254310 (LWG)
	<i>Trichosanthes cucumerina</i> L.	Climber	Cultivated	Kushwaha 254429 (LWG)
	<i>Trichosanthes cucumerina</i> L. var. <i>anguina</i> (L.) Haines	Climber	Native	Kushwaha 254437 (LWG)
	<i>Trichosanthes dioica</i> Roxb.	Herb	Cultivated	Kushwaha 254426 (LWG)
Dipterocarpaceae	<i>Shorea robusta</i> Gaertn.	Tree	Native	Kushwaha 259826 (LWG)
Ebenaceae	<i>Diospyros melanoxylon</i> Roxb.	Small tree	Native	Kushwaha 254523 (LWG)
	<i>Diospyros montana</i> Roxb.	Small tree	Native	Kushwaha 254487 (LWG)
Elatinaceae	<i>Bergia ammannioides</i> Roxb. ex Roth	Herb	Native	Shrivastava 21670 (LWG)
Euphorbiaceae	<i>Acalypha ciliata</i> Forssk.	Herb	Native	Panigrahi 12233 (BSA)
	<i>Baliospermum solanifolium</i> (Burm.) Suresh	Shrub	Native	Panigrahi 12634 (BSA)
	<i>Chrozophora rotleri</i> (Geiseler) A.Juss. ex Spreng.	Herb	Alien	Kushwaha 304194 (LWG)
	<i>Croton bonplandianus</i> Baill.	Herb	Alien	Kushwaha 254352 (LWG)
	<i>Euphorbia hirta</i> L.	Herb	Native	Kushwaha 304189 (LWG)
	<i>Euphorbia hypericifolia</i> L.	Herb	Native	Panigrahi 13413 (BSA)
	<i>Euphorbia prostrata</i> Aiton	Herb	Native	Kushwaha 304193 (LWG)
	<i>Jatropha gossypifolia</i> L.	Shrub	Native	Kushwaha 304190 (LWG)
	<i>Mallotus nudiflorus</i> (L.) Kulju & Welzen	Tree	Native	Kushwaha 254294 (LWG)
	<i>Mallotus philippensis</i> (Lam.) Müll.Arg.	Tree	Native	Kushwaha 2598621 (LWG)
	<i>Microstachys chamaelea</i> (L.) Müll.Arg.	Herb	Native	Panigrahi 2017 (BSA)
	<i>Ricinus communis</i> L.	Shrub	Native	Kushwaha 304188 (LWG)
Fabaceae-Caesalpinioideae	<i>Bauhinia malabarica</i> Roxb.	Tree	Native	Kushwaha 254378 (LWG)
	<i>Bauhinia purpurea</i> L.	Tree	Native	Kushwaha 259242 (LWG)
	<i>Bauhinia racemosa</i> Lam.	Tree	Native	Kushwaha 259251 (LWG)
	<i>Bauhinia semla</i> Wunderlin	Tree	Native	Kushwaha & Chaudhary 259831 (LWG)
	<i>Bauhinia vahlii</i> Wight & Arn.	Tree	Native	Panigrahi 13825 (BSA)
	<i>Bauhinia variegata</i> L.	Tree	Native	Kushwaha 259263 (LWG)
	<i>Cassia fistula</i> L.	Tree	Native	Kushwaha 254376 (LWG)
	<i>Chamaecrista absus</i> (L.) H.S.Irwin & Barneby	Tree	Native	Chaudhary & Kushwaha 259265 (LWG)
	<i>Chamaecrista mimosoides</i> (L.) Greene	Herb	Native	Panigrahi 12208 (BSA)
	<i>Delonix regia</i> (Hook.) Raf.	Tree	Cultivated	Chaudhary & Kushwaha 259855 (LWG)
	<i>Hardwickia binata</i> Roxb.	Tree	Native	Kushwaha 254324 (LWG)
	<i>Parkinsonia aculeata</i> L.	Small tree	Native	Kushwaha 259261 (LWG)
	<i>Peltophorum pterocarpum</i> (DC.) K.Heyne	Tree	Cultivated	Kushwaha 254297 (LWG)
	<i>Piliostigma malabaricum</i> (Roxb.) Benth.	Tree	Native	Kushwaha & Srivastava 259261 (LWG)
	<i>Senna alata</i> (L.) Roxb.	Shrub	Alien	Kushwaha 254298 (LWG)
	<i>Senna occidentalis</i> (L.) Link	Herb	Native	Panigrahi 12357 (BSA)
	<i>Senna siamea</i> (Lam.) H.S.Irwin & Barneby	Tree	Native	Kushwaha 259260 (LWG)
	<i>Senna tora</i> (L.) Roxb.	Herb	Alien	Kushwaha 254340 (LWG)

Family	Taxa	Growth form	Remarks	Collection reference	
Fabaceae-Mimosoideae	<i>Acacia auriculiformis</i> Benth.	Tree	Cultivated	Kushwaha 254373 (LWG)	
	<i>Acacia catechu</i> (L.f.) Willd.	Tree	Native	Kushwaha 254366 (LWG)	
	<i>Acacia nilotica</i> (L.) Delile	Tree	Native	Kushwaha 259294 (LWG)	
	<i>Acacia pinnata</i> Link	Tree	Native	Chaudhary & Kushwaha 259294 (LWG)	
	<i>Acacia torta</i> (Roxb.) Craib	Shrub	Native	Panigrahi 4131 (BSA)	
	<i>Albizia lebbek</i> (L.) Benth.	Tree	Native	Kushwaha 264785 (LWG)	
	<i>Albizia procera</i> (Roxb.) Benth.	Tree	Native	Kushwaha 254288 (LWG)	
	<i>Albizia odoratissima</i> (L.f.) Benth.	Tree	Native	Panigrahi 13538 (BSA)	
	<i>Dichrostachys cinerea</i> (L.) Wight & Arn.	Tree	Native	Kushwaha 254295 (LWG)	
	<i>Leucaena leucocephala</i> (Lam.) de Wit	Tree	Alien	Kushwaha 254504 (LWG)	
	<i>Mimosa himalayana</i> Gamble	Small tree	Native	Panigrahi 13929 (BSA)	
	<i>Mimosa rubicaulis</i> Lam.	Small tree	Native	Panigrahi 13771 (BSA)	
	<i>Pithecellobium dulce</i> (Roxb.) Benth.	Tree	Native	Kushwaha 259834 (LWG)	
	<i>Prosopis cineraria</i> (L.) Druce	Tree	Native	Kushwaha 259862 (LWG)	
	<i>Prosopis juliflora</i> (Sw.) DC.	Small tree	Alien	Kushwaha 259290 (LWG)	
	Fabaceae-Papilionoideae	<i>Abrus precatorius</i> L.	Climber	Native	Singh & Party 9335 (LWG)
		<i>Aeschynomene indica</i> L.	Herb	Native	Panigrahi 12268 (BSA)
		<i>Atylosia scarabaeoides</i> (L.) Benth.	Herb	Native	Kushwaha 264734 (LWG)
<i>Alhagi maurorum</i> Medik.		Shrub	Native	Kushwaha 304144 (LWG)	
<i>Alysicarpus bupleurifolius</i> (L.) DC.		Herb	Native	Kushwaha 304109 (LWG)	
<i>Alysicarpus glumaceus</i> (Vahl) DC.		Herb	Native	Panigrahi 13596 (BSA)	
<i>Alysicarpus hamosus</i> Edgew.		Herb	Native	Panigrahi 13936 (BSA)	
<i>Alysicarpus monilifer</i> (L.) DC.		Herb	Native	Mishra 9896 (BSA)	
<i>Alysicarpus vaginalis</i> (L.) DC.		Herb	Native	Kushwaha 264724 (LWG)	
<i>Butea monosperma</i> (Lam.) Taub.		Tree	Native	Kushwaha 259287 (LWG)	
<i>Cajanus cajan</i> (L.) Millsp.		Shrub	Cultivated	Kushwaha 259287 (LWG)	
<i>Cajanus platycarpus</i> (Benth.) Maesen		Herb	Native	Singh et al. EBH 513 (LWG)	
<i>Cajanus scarabaeoides</i> (L.) Thouars		Herb	Native	Panigrahi 12288 (BSA)	
<i>Cicer arietinum</i> L.		Herb	Cultivated	Singh et al. EBH 601 (LWG)	
<i>Clitoria ternatea</i> L.		Herb	Native	Panigrahi 13837 (BSA)	
<i>Codariocalyx motorius</i> (Houtt.) H. Ohashi		Shrub	Native	Panigrahi 11129 (BSA)	
<i>Crotalaria albida</i> Roth		Shrub	Native	Kushwaha 254517 (LWG)	
<i>Crotalaria spectabilis</i> Roth		Herb	Native	Kushwaha 304119 (LWG)	
<i>Crotalaria juncea</i> L.		Shrub	Cultivated	Singh & Party EHB 518 (LWG)	
<i>Crotalaria medicaginea</i> Lam.		Herb	Native	Kushwaha 264702 (LWG)	
<i>Crotalaria mysorensis</i> Roth		Herb	Native	Chaudhary & Dutt 264702 (LWG)	
<i>Crotalaria prostrata</i> Willd.		Herb	Native	Kushwaha 264737 (LWG)	
<i>Crotalaria quinquefolia</i> L.		Herb	Native	Chaudhary & Dutt 264717 (LWG)	
<i>Daldergia sisso</i> DC.		Tree	Native	Kushwaha 259296 (LWG)	
<i>Dalbergia lanceolaria</i> L.f.		Tree	Native	Kushwaha & Bajpai 259296 (LWG)	
<i>Dalbergia latifolia</i> Roxb.		Tree	Native	Mishra 9817 (BSA)	
<i>Desmodium oajenenensis</i> (Roxb.) H. Ohasi		Tree	Native	Kushwaha 259276 (LWG)	
<i>Desmodium dichotomum</i> (Willd.) DC.		Herb	Native	Kushwaha 259879 (LWG)	

Family	Taxa	Growth form	Remarks	Collection reference
	<i>Desmodium polycarpum</i> (Poir.) DC.	Herb	Native	Kushwaha 254338 (LWG)
	<i>Desmodium gangeticum</i> (L.) DC.	Herb	Native	Kushwaha 259811 (LWG)
	<i>Desmodium heterocarpon</i> (L.) DC.	Shrub	Native	Kushwaha & Srivastava 259811 (LWG)
	<i>Desmodium triflorum</i> (L.) DC.	Shrub	Native	Panigrahi 3633 (BSA)
	<i>Desmodium velutinum</i> (willd.) DC.	Herb	Native	Kushwaha 264756 (LWG)
	<i>Erythrina stricta</i> Roxb.	Tree	Native	Kushwaha 254441 (LWG)
	<i>Erythrina suberosa</i> Roxb.	Herb	Native	Kushwaha 254441 (LWG)
	<i>Flemingia strobilifera</i> (L.) W.T.Aiton	Shrub	Native	Panigrahi 8427 (BSA)
	<i>Indigofera astragalina</i> DC.	Tree	Native	Chaudhary & Kushwaha 259246 (LWG)
	<i>Indigofera cassioides</i> DC.	Tree	Native	Panigrahi 13769 (BSA)
	<i>Indigofera hirsuta</i> L.	Herb	Native	Panigrahi 8496 (BSA)
	<i>Indigofera linifolia</i> (L.f.) Retz.	Herb	Alien	Kushwaha 264790 (LWG)
	<i>Indigofera linnaei</i> Ali	Shrub	Alien	Chaudhary & Dutt 264790 (LWG)
	<i>Indigofera tinctoria</i> L.	Shrub	Native	Panigrahi 12397 (BSA)
	<i>Indigofera trita</i> L.f.	Herb	Native	Panigrahi 13516 (BSA)
	<i>Lablab purpureus</i> (L.) Sweet	Herb	Cultivated	Kushwaha 259803 (LWG)
	<i>Lathyrus aphaca</i> L.	Herb	Native	Singh et al. 9344 (LWG)
	<i>Lathyrus sativus</i> L.	Herb	Native	Singh 1867 (LWG)
	<i>Medicago polymorpha</i> L.	Herb	Native	Kushwaha 254375 (LWG)
	<i>Melilotus indicus</i> (L.) All.	Herb	Native	Panigrahi 9651 (BSA)
	<i>Milletia extensa</i> (Benth.) Baker	Herb	Native	Panigrahi 13929 (BSA)
	<i>Milletia peguensis</i> Ali	Tree	Native	Kushwaha 254296 (LWG)
	<i>Mucuna pruriens</i> (L.) DC.	Climber	Native	Kushwaha 264705 (LWG)
	<i>Phyllodium pulchellum</i> (L.) Desv.	Shrub	Native	Chaudhary & Dutt 264705 (LWG)
	<i>Pongamia pinnata</i> (L.) Pierre	Tree	Native	Kushwaha 254693 (LWG)
	<i>Pterocarpus marsupium</i> Roxb.	Tree	Native	Kushwaha 259253 (LWG)
	<i>Rhynchosia capitata</i> (Roth) DC.	Herb	Native	Panigrahi 12346 (BSA)
	<i>Rhynchosia minima</i> (L.) DC.	Herb	Native	Panigrahi 12357 (BSA)
	<i>Sesbania bispinosa</i> (Jacq.) W.Wight	Herb	Alien	Kushwaha 254340 (LWG)
	<i>Sesbania sesban</i> (L.) Merr.	Shrub	Native	Panigrahi 13892 (BSA)
	<i>Smithia conferta</i> Sm.	Herb	Native	Panigrahi 13694 (BSA)
	<i>Tephrosia pumila</i> (Lam.) Pers.	Herb	Native	Panigrahi 13883 (BSA)
	<i>Tephrosia purpurea</i> (L.) Pers.	Herb	Native	Kushwaha 254365 (LWG)
	<i>Tephrosia strigosa</i> (Dalzell) Santapau & Maheshw.	Herb	Native	Kushwaha 254365 (LWG)
	<i>Teramnus labialis</i> (L.f.) Spreng.	Herb	Native	Panigrahi 13742 (BSA)
	<i>Trifolium alexandrinum</i> L.	Herb	Native	Panigrahi 13742 (BSA)
	<i>Trigonella foenum-graecum</i> L.	Herb	Cultivated	Panigrahi 12098 (BSA)
	<i>Uraria lagopodoides</i> (L.) DC.	Herb	Native	Panigrahi 13654 (BSA)
	<i>Uraria lagopus</i> var. <i>neglecta</i> (Prain) H.Ohashi	Herb	Native	Panigrahi 13654 (BSA)
	<i>Uraria picta</i> (Jacq.) DC.	Herb	Native	Kushwaha 254401 (LWG)
	<i>Vicia hirsuta</i> (L.) Gray	Herb	Native	Panigrahi 9626 (BSA)
	<i>Vicia sativa</i> L.	Herb	Native	Singh & Saha EBH 600 (LWG)
	<i>Vigna aconitifolia</i> (Jacq.) Marechal	Herb	Native	Panigrahi 12321 (BSA)

Family	Taxa	Growth form	Remarks	Collection reference
	<i>Vigna mungo</i> (L.) Hepper	Herb	Cultivated	Kushwaha 254358 (LWG)
	<i>Vigna radiata</i> (L.) R.Wilczek	Herb	Cultivated	Kushwaha 264755 (LWG)
	<i>Vigna trilobata</i> (L.) Verdc.	Herb	Native	Panigrahi 2236 (BSA)
	<i>Vigna umbellata</i> (Thunb.) Ohwi & H.Ohashi	Herb	Cultivated	Panigrahi 12496
	<i>Zornia gibbosa</i> Span.	Herb	Native	Panigrahi 12317 (BSA)
	<i>Zornia glochidiata</i> DC.	Herb	Native	Chaudhary & Datt 264748 (LWG)
Gesneriaceae	<i>Didymocarpus pygmaeus</i> C.B.Clarke	Herb	Native	Panigrahi 12231 (BSA)
Gentianaceae	<i>Canscora alata</i> (Roth) Wall.	Herb	Native	Kushwaha 259821 (LWG)
	<i>Canscora diffusa</i> (Vahl) R.Br. ex Roem. & Schult.	Herb	Native	Kushwaha 264792 (LWG)
	<i>Hoppea dichotoma</i> Willd.	Herb	Native	Kushwaha 264792 (LWG)
	<i>Swertia ciliata</i> (D. Don ex G. Don) B.L. Burtt	Herb	Native	Panigrahi 2097 (BSA)
Hydrophyllaceae	<i>Hydrolea zeylanica</i> (L.) Vahl	Herb	Native	Panigrahi 13860 (BSA)
Lamiaceae	<i>Anisomeles indica</i> (L.) Kuntze	Herb	Native	Panigrahi 13680 (BSA)
	<i>Hyptis suaveolens</i> (L.) Poit.	Herb	Alien	Kushwaha 259256 (LWG)
	<i>Leonotis nepetifolia</i> (L.) R.Br.	Herb	Alien	Panigrahi 2232 (BSA)
	<i>Leucas aspera</i> (Willd.) Link	Herb	Native	Panigrahi 12067 (BSA)
	<i>Leucas cephalotes</i> (Roth) Spreng.	Herb	Native	Kushwaha 254500 (LWG)
	<i>Ocimum americanum</i> L.	Herb	Alien	Kushwaha 254343 (LWG)
	<i>Ocimum basilicum</i> L.	Herb	Native	Kushwaha 254499 (LWG)
	<i>Ocimum tenuiflorum</i> L.	Herb	Native	Kushwaha 259274 (LWG)
	<i>Orthosiphon pallidus</i> Royle ex Benth.	Herb	Native	Kushwaha 259274 (LWG)
	<i>Premna herbacea</i> Roxb.	Herb	Native	Panigrahi 2098 (BSA)
	<i>Salvia plebeia</i> R.Br.	Herb	Native	Kushwaha 254498 (LWG)
Lauraceae	<i>Litsea glutinosa</i> (Lour.) C.B. Rob.	Tree	Native	Kushwaha 254598 (LWG)
	<i>Litsea monopetalata</i> (Roxb.) Pers.	Tree	Native	Kushwaha 254496 (LWG)
Lecythydaceae	<i>Barringtonia acutangula</i> (L.) Gaertn.	Tree	Native	Mishra 9831 (BSA)
	<i>Careya arborea</i> Roxb.	Tree	Native	Singh & Party 7631 (LWG)
Lentibulariaceae	<i>Utricularia aurea</i> Lour.	Herb	Native	Panigrahi 13486 (BSA)
Linaceae	<i>Linum usitatissimum</i> L.	Herb	Cultivated	Kushwaha 304124 (LWG)
Linderniaceae	<i>Lindernia anagallis</i> (Burm.f.) Pennell	Herb	Native	Kushwaha 304111 (LWG)
	<i>Lindernia ciliata</i> (Colsm.) Pennell	Herb	Native	Kushwaha 304114 (LWG)
	<i>Lindernia crustacea</i> (L.) F.Muell.	Herb	Native	Kushwaha 304145 (LWG)
Loranthaceae	<i>Dendrophthoe falcata</i> (L.f.) Ettingsh.	Shrub	Native	Panigrahi 9682 (BSA)
	<i>Loranthus philippinensis</i> Cham. & Schlecht., extract	Shrub	Native	Panigrahi 13527 (BSA)
	<i>Taxillus tomentosus</i> Tiegh.	Shrub	Native	Panigrahi 12036 (BSA)
Lythraceae	<i>Ammannia baccifera</i> L.	Herb	Native	Kushwaha 304146 (LWG)
	<i>Ammannia multiflora</i> Roxb.	Herb	Native	Panigrahi 12573 (BSA)
	<i>Lagerstroemia indica</i> L.	Shrub	Native	Kushwaha 254299 (LWG)
	<i>Lagerstroemia parviflora</i> Roxb.	Tree	Native	Kushwaha 259264 (LWG)
	<i>Lagerstroemia speciosa</i> (L.) Pers.	Tree	Cultivated	Kushwaha 254300 (LWG)
	<i>Lawsonia inermis</i> L.	Shrub	Native	Singh 1878 (LWG)
	<i>Rotala indica</i> (Willd.) Koehne	Herb	Native	Kushwaha 304147 (LWG)
	<i>Trapa natans</i> L.	Herb	Native	Kushwaha 304150 (LWG)
	<i>Woodfordia floribunda</i> Salisb.	Shrub	Native	Panigrahi 1864 (BSA)
	<i>Woodfordia fruticosa</i> (L.) Kurz	Shrub	Native	Kushwaha 259832 (LWG)

Family	Taxa	Growth form	Remarks	Collection reference
Malvaceae	<i>Abelmoschus manihot</i> (L.) Medik.	Herb	Native	Kushwaha 304151 (LWG)
	<i>Abelmoschus moschatus</i> Medik.	Herb	Cultivated	Kushwaha 304139 (LWG)
	<i>Abelmoschus crinitus</i> Wall.	Shrub	Cultivated	Singh & Party EBH 7626 (LWG)
	<i>Abelmoschus esculentus</i> (L.) Moench	Shrub	Cultivated	Maheshwari & Saha EBH 733 (LWG)
	<i>Abutilon ramosum</i> (Cav.) Guill. & Perr.	Shrub	Native	Kushwaha 304152 (LWG)
	<i>Abutilon indicum</i> (L.) Sweet	Shrub	Native	Kushwaha 259275 (LWG)
	<i>Byttneria herbacea</i> Roxb.	Shrub	Native	Chaudhary & Datt 264723 (LWG)
	<i>Ceiba pentandra</i> (L.) Gaertn.	Tree	Cultivated	Kushwaha 259889 (LWG)
	<i>Corchorus aestuans</i> L.	Herb	Alien	Kushwaha 264769 (LWG)
	<i>Corchorus capsularis</i> L.	Herb	Native	Kushwaha 264769 (LWG)
	<i>Corchorus tridens</i> L.	Herb	Alien	Kushwaha 259890 (LWG)
	<i>Corchorus olitorius</i> L.	Herb	Native	Panigrahi 13877 (BSA)
	<i>Grewia asiatica</i> L.	Tree	Native	Kushwaha 304153 (LWG)
	<i>Grewia hirsuta</i> Vahl	Tree	Native	Kushwaha 264760 (LWG)
	<i>Grewia tiliifolia</i> Vahl	Tree	Native	Kushwaha 264760 (LWG)
	<i>Hibiscus cannabinus</i> L.	Shrub	Native	Panigrahi 12602 (BSA)
	<i>Hibiscus lobatus</i> (Murray) Kuntze	Herb	Native	Mishra 9950 (BSA)
	<i>Hibiscus micranthus</i> L.f.	Shrub	Native	Panigrahi 13937 (BSA)
	<i>Hibiscus mutabilis</i> L.	Shrub	Native	Kushwaha 304154 (LWG)
	<i>Hibiscus panduriformis</i> Burm.f.	Shrub	Native	Panigrahi 13878 (BSA)
	<i>Hibiscus sabdariffa</i> L.	Herb	Native	Singh & Party EBH 545 (LWG)
	<i>Kydia calycina</i> Roxb.	Tree	Native	Panigrahi 12480 (BSA)
	<i>Malvastrum coromandelianum</i> (L.) Garcke	Herb	Alien	Kushwaha 304142 (LWG)
	<i>Pavonia cancellata</i> (L.) Cav.	Herb	Native	Panigrahi 2698 (BSA)
	<i>Pterospermum acerifolium</i> (L.) Willd.	Tree	Native	Kushwaha 259893 (LWG)
	<i>Sida cordata</i> (Burm.f.) Borss.Waalk.	Shrub	Native	Kushwaha 259236 (LWG)
	<i>Sida cordifolia</i> L.	Shrub	Native	Shrivastava 21670 (LWG)
	<i>Sida spinosa</i> L.	Herb	Native	Panigrahi 9612 (BSA)
	<i>Sida acuta</i> Burm.f.	Herb	Alien	Panigrahi 13518 (BSA)
	<i>Sida rhombifolia</i> L.	Herb	Native	Saha & Party EBH246 (LWG)
<i>Thespesia populnea</i> (L.) Sol. ex Corrêa	Tree	Native	Kushwaha 259894 (LWG)	
<i>Triumfetta pentandra</i> A. Rich.	Shrub	Native	Kushwaha 264706 (LWG)	
<i>Urena lobata</i> L.	Herb	Alien	Kushwaha 259264 (LWG)	
Martyniaceae	<i>Martynia annua</i> L.	Herb	Alien	Kushwaha 264775 (LWG)
Meliaceae	<i>Azadirachta indica</i> A. Juss.	Tree	Native	Kushwaha 259282 (LWG)
	<i>Melia azedarach</i> L.	Tree	Native	Kushwaha 259863 (LWG)
	<i>Soymida febrifuga</i> (Roxb.) A. Juss.	Tree	Native	Kushwaha 259217 (LWG)
	<i>Toona ciliata</i> M. Roem.	Tree	Native	Kushwaha 259271 (LWG)
Menispermaceae	<i>Cissampelos pareira</i> L.	Shrub	Native	Kushwaha 254331 (LWG)
	<i>Cocculus diversifolius</i> DC.	Climber	Native	Kushwaha 304148 (LWG)
	<i>Cocculus hirsutus</i> (L.) W.Theob.	Climber	Native	Kushwaha 259288 (LWG)
	<i>Tinospora cordifolia</i> (Willd.) Miers	Climber	Native	Kushwaha 304155 (LWG)
Menyanthaceae	<i>Nymphoides cristata</i> (Roxb.) Kuntze	Herb	Native	Kushwaha 304149 (LWG)
Moraceae	<i>Artocarpus heterophyllus</i> Lam.	Tree	Cultivated	Kushwaha 254494(LWG)

Family	Taxa	Growth form	Remarks	Collection reference
	<i>Artocarpus lacucha</i> Buch.-Ham	Tree	Cultivated	Kushwaha 304156 (LWG)
	<i>Ficus benghalensis</i> L.	Tree	Native	Kushwaha 254533 (LWG)
	<i>Ficus benjamina</i> L.	Small tree	Cultivated	Kushwaha 254281 (LWG)
	<i>Ficus elastica</i> Roxb. ex Hornem	Tree	Cultivated	Kushwaha 259895 (LWG)
	<i>Ficus hispida</i> L.f.	Tree	Native	Kushwaha 304157 (LWG)
	<i>Ficus palmata</i> Forssk.	Small tree	Native	Kushwaha 304158 (LWG)
	<i>Ficus pumila</i> L.	Climber	Native	Kushwaha 304163 (LWG)
	<i>Ficus racemosa</i> L.	Tree	Native	Kushwaha 254286 (LWG)
	<i>Ficus religiosa</i> L.	Tree	Native	Kushwaha 254351 (LWG)
	<i>Ficus virens</i> Aiton	Tree	Native	Kushwaha 254282 (LWG)
	<i>Morus alba</i> L.	Tree	Cultivated	Kushwaha 254287 (LWG)
	<i>Morus indica</i> L.	Tree	Native	Kushwaha 254284 (LWG)
	<i>Streblus asper</i> Lour.	Tree	Native	Kushwaha 254291 (LWG)
Moringaceae	<i>Moringa oleifera</i> Lam.	Tree	Cultivated	Kushwaha 304165 (LWG)
Myrsinaceae	<i>Embelia tsjeriam-cottam</i> (Roem. & Schult.) A.DC.	Tree	Native	Panigrahi 4126 (BSA)
Myrtaceae	<i>Callistemon citrinus</i> (Curtis) Skeels	Tree	Cultivated	Kushwaha 304159 (LWG)
	<i>Eucalyptus tereticornis</i> Sm.	Tree	Cultivated	Kushwaha 304161 (LWG)
	<i>Psidium guajava</i> L.	Tree	Cultivated	Kushwaha 254357 (LWG)
	<i>Syzygium cumini</i> (L.) Skeels	Tree	Native	Kushwaha 264775 (LWG)
	<i>Syzygium salicifolium</i> (Wight) J.Graham	Tree	Native	Kushwaha 254493 (LWG)
Nyctaginaceae	<i>Boerhavia diffusa</i> L.	Herb	Native	Singh 9364 (LWG)
	<i>Boerhavia chinensis</i> (L.) Rottb.	Herb	Native	Kushwaha 304162 (LWG)
	<i>Boerhavia repens</i> L.	Herb	Native	Panigrahi 13731 (BSA)
	<i>Bougainvillea glabra</i> Choisy in DC.	Shrub	Cultivated	Kushwaha 304164 (LWG)
	<i>Mirabilis jalapa</i> L.	Herb	Alien	Kushwaha 259897 (LWG)
Nymphaeaceae	<i>Nymphaea nouchali</i> Burm. f.	Herb	Native	Kushwaha 304170 (LWG)
	<i>Nymphaea pubescens</i> Willd.	Herb	Native	Kushwaha 304160 (LWG)
Olaceae	<i>Olax scandens</i> Roxb.	Shrub	Native	Panigrahi 2669 (BSA)
Oleaceae	<i>Jasminum multiflorum</i> (Burm. f.) Andrews	Shrub	Native	Kushwaha 304166 (LWG)
	<i>Jasminum arborescens</i> Roxb.	Shrub	Native	Mishra 9904 (BSA)
	<i>Nyctanthes arbor-tristis</i> L.	Small tree	Native	Kushwaha 254413 (LWG)
Onagraceae	<i>Ludwigia octovalis</i> (Jacq.) P.H.Raven	Herb	Native	Panigrahi 12651 (BSA)
	<i>Ludwigia perennis</i> L.	Herb	Native	Panigrahi 13751 (BSA)
Orobanchaceae	<i>Orobanche aegyptiaca</i> Pers.	Herb	Native	Kushwaha 304171 (LWG)
Oxalidaceae	<i>Averrhoa carambola</i> L.	Tree	Cultivated	Kushwaha 304175 (LWG)
	<i>Biophytum reinwardtii</i> (Zucc.) Klotzsch	Herb	Native	Kushwaha 259783 (LWG)
	<i>Biophytum sensitivum</i> (L.) DC.	Herb	Native	Kushwaha 264732 (LWG)
	<i>Oxalis corniculata</i> L.	Herb	Alien	Kushwaha 254463 (LWG)
Papaveraceae	<i>Argemone mexicana</i> L.	Herb	Alien	Kushwaha 304169 (LWG)
	<i>Fumaria indica</i> (Hauskn.) Pugsley	Herb	Native	Kushwaha 304176 (LWG)
Pedaliaceae	<i>Sesamum mulayanum</i> N.C.Nair	Herb	Native	Kushwaha 254329 (LWG)
	<i>Sesamum indicum</i> L.	Herb	Cultivated	Panigrahi 13803 (BSA)
Phyllanthaceae	<i>Bridelia retusa</i> (L.) A. Juss.	Tree	Native	Mishra 9993 (BSA)
	<i>Cleistanthus collinus</i> (Roxb.) Benth. ex Hook.f.	Tree	Native	Kushwaha 304178 (LWG)
	<i>Flueggea virosa</i> (Roxb. ex Willd.) Royle	Shrub	Native	Kushwaha 264712 (LWG)

Family	Taxa	Growth form	Remarks	Collection reference
	<i>Phyllanthus emblica</i> L.	Tree	Native	Kushwaha 264733 (LWG)
	<i>Phyllanthus urinaria</i> L.	Herb	Native	Panigrahi 6556 (BSA)
	<i>Phyllanthus virgatus</i> G. Forst.	Herb	Native	Kushwaha 304172 (LWG)
	<i>Phyllanthus reticulatus</i> Poir.	Small tree	Native	Kushwaha 254313 (LWG)
Plantaginaceae	<i>Lindenbergia indica</i> Vatke	Herb	Native	Panigrahi 13921 (BSA)
	<i>Scoparia dulcis</i> L.	Herb	Alien	Mishra 9754 (BSA)
Plumbaginaceae	<i>Plumbago zeylanica</i> L.	Herb	Native	Kushwaha 304145 (LWG)
Putranjivaceae	<i>Putranjiva roxburghii</i> Wall.	Tree	Native	Kushwaha 259898 (LWG)
Polygalaceae	<i>Polygala chinensis</i> L.	Herb	Native	Mishra 9964 (BSA)
	<i>Polygala longifolia</i> Poir.	Herb	Native	Panigrahi 12070 (BSA)
	<i>Polygala arvensis</i> Willd.	Herb	Native	Kushwaha 304173 (LWG)
Polygonaceae	<i>Antigonon leptopus</i> Hook. & Arn.	Climber	Alien	Kushwaha 304167 (LWG)
	<i>Persicaria barbata</i> (L.) H.Hara	Herb	Native	Kushwaha 304177 (LWG)
	<i>Persicaria hydropiper</i> (L.) Delarbre	Herb	Native	Kushwaha 304181 (LWG)
	<i>Polygonum aviculare</i> L.	Herb	Native	Kushwaha 259804 (LWG)
	<i>Polygonum plebeium</i> R.Br.	Herb	Native	Kushwaha 254467 (LWG)
	<i>Rumex dentatus</i> L.	Herb	Native	Kushwaha 304179 (LWG)
Portulacaceae	<i>Portulaca oleracea</i> L.	Herb	Alien	Kushwaha 254464 (LWG)
Primulaceae	<i>Anagallis arvensis</i> L.	Herb	Native	Kushwaha 254470 (LWG)
Punicaceae	<i>Punica granatum</i> L.	Small tree	Cultivated	Kushwaha 254402 (LWG)
Ranunculaceae	<i>Ranunculus sceleratus</i> L.	Herb	Native	Kushwaha 254469 (LWG)
	<i>Ranunculus scleratooides</i> Perfil. ex Ovczinn.	Herb	Native	Kushwaha 304174 (LWG)
Rhamnaceae	<i>Ventilago maderaspatana</i> Gaertn.	Tree	Native	Saha & Party EBH257 (LWG)
	<i>Ziziphus nummularia</i> (Burm.f.) Wight & Arn.	Small tree	Native	Kushwaha 254446 (LWG)
	<i>Ziziphus oenopolia</i> (L.) Mill.	Small tree	Native	Kushwaha 254325 (LWG)
	<i>Ziziphus jujuba</i> Mill.	Small tree	Native	Kushwaha 254470 (LWG)
	<i>Ziziphus xylopyrus</i> (Retz.) Willd.	Small tree	Native	Kushwaha 254316 (LWG)
Rubiaceae	<i>Catunaregam longispina</i> (Link) Tirveng.	Small tree	Native	Panigrahi & Prasad 9979 (BSA)
	<i>Cercooides turgida</i> (Roxb.) Tirveng.	Tree	Native	Kushwaha 259840 (LWG)
	<i>Dentella repens</i> (L.) J.R.Forst. & G.Forst.	Herb	Native	Mishra 9801 (BSA)
	<i>Gardenia latifolia</i> Aiton	Tree	Native	Kushwaha 259822 (LWG)
	<i>Haldina cordifolia</i> (Roxb.) Ridsdale	Tree	Native	Kushwaha 259270 (LWG)
	<i>Knoxia sumatrensis</i> (Retz.) DC.	Herb	Native	Panigrahi 12490 (BSA)
	<i>Mitragyna parvifolia</i> (Roxb.) Korth	Tree	Native	Kushwaha 259842 (LWG)
	<i>Neolamarckia cadamba</i> (Roxb.) Bosser	Tree	Cultivated	Kushwaha 259899 (LWG)
	<i>Spermadictyon suaveolens</i> Roxb.	Herb	Native	Panigrahi 13593 (BSA)
	<i>Oldenlandia diffusa</i> (Willd.) Roxb.	Herb	Native	Kushwaha 254471 (LWG)
	<i>Oldenlandia corymbosa</i> L.	Herb	Native	Kushwaha 304168 (LWG)
	<i>Oldenlandia herbacea</i> (L.) Roxb.	Herb	Native	Panigrahi 12596 (BSA)
	<i>Spermacoce articularis</i> L.f.	Herb	Native	Panigrahi 12565 (BSA)
	<i>Tamilnadia uliginosa</i> (Retz.) Tirveng. & Sastre	Small tree	Native	Mishra 9979 (BSA)
	<i>Wendlandia heynei</i> (Schult.) Santapau & Merchant	Tree	Native	Kushwaha 259267 (LWG)
Rutaceae	<i>Aegle marmelos</i> (L.) Corrêa	Tree	Native	Kushwaha 254474 (LWG)
	<i>Citrus limon</i> (L.) Osbeck	Tree	Cultivated	Kushwaha 254468 (LWG)
	<i>Citrus medica</i> L.	Tree	Cultivated	Kushwaha 254491 (LWG)

Family	Taxa	Growth form	Remarks	Collection reference
	<i>Glycosmis pentaphylla</i> (Retz.) DC.	Shrubs	Native	Kushwaha 259900 (LWG)
	<i>Hesperethusa crenulata</i> (Roxb.) M. Roem.	Tree	Native	Panigrahi 13588 (BSA)
	<i>Limonia acidissima</i> Groff	Tree	Native	Kushwaha 254497 (LWG)
	<i>Murraya koenigii</i> (L.) Spreng.	Tree	Native	Kushwaha 259853 (LWG)
	<i>Murraya paniculata</i> (L.) Jack	Tree	Native	Kushwaha 254471 (LWG)
Salicaceae	<i>Casearia tomentosa</i> Roxb.	Tree	Native	Kushwaha 254465 (LWG)
	<i>Flacourtia indica</i> (Burm.f.) Merr.	Tree	Native	Kushwaha 259830 (LWG)
Sapindaceae	<i>Sapindus emarginatus</i> Vahl	Tree	Native	Maheshwari & Saha EBH 821 (LWG)
	<i>Schleichera oleosa</i> (Lour.) Merr.	Tree	Native	Kushwaha 259823 (LWG)
Sapotaceae	<i>Madhuca longifolia</i> (J.Koenig ex L.) J.F.Macbr.	Tree	Native	Kushwaha 254360 (LWG)
Scrophulariaceae	<i>Bacopa monnieri</i> (L.) Wettst.	Herb	Native	Kushwaha 254472 (LWG)
	<i>Centranthera nepalensis</i> D.Don	Herb	Native	Kushwaha 254466 (LWG)
	<i>Kickxia ramosissima</i> (Wall.) Janch.	Herb	Native	Panigrahi 13421 (BSA)
	<i>Limnophila heterophylla</i> (Roxb.) Benth.	Herb	Native	Panigrahi 9668 (BSA)
	<i>Limnophila indica</i> (L.) Druce	Herb	Native	Panigrahi 12354 (BSA)
	<i>Mazus pumilus</i> (Burm.f.) Steenis	Herb	Native	Panigrahi 12094 (BSA)
	<i>Mecardonia procumbens</i> (Mill.) Small	Herb	Native	Kushwaha 254399 (LWG)
	<i>Scoparia dulcis</i> L.	Herb	Native	Panigrahi 9684 (BSA)
	<i>Veronica anagallis</i> L.	Herb	Native	Panigrahi 12635 (BSA)
Simaroubaceae	<i>Ailanthus excelsa</i> Roxb.	Tree	Native	Kushwaha 259854 (LWG)
Solanaceae	<i>Datura innoxia</i> Mill.	Herb	Alien	Kushwaha 254473 (LWG)
	<i>Datura metel</i> L.	Shrub	Alien	Kushwaha 259284 (LWG)
	<i>Lycopersicon lycopersicum</i> (L.) H.Karst.	Shrub	Native	Kushwaha 254480 (LWG)
	<i>Nicotiana plumbaginifolia</i> Viv.	Herb	Alien	Kushwaha 254476 (LWG)
	<i>Nicotiana tabacum</i> L.	Herb	Native	Kushwaha 259854 (LWG)
	<i>Physalis minima</i> L.	Herb	Native	Kushwaha 254337 (LWG)
	<i>Physalis peruviana</i> L.	Herb	Native	Kushwaha 254477 (LWG)
	<i>Solanum americanum</i> Mill.	Herb	Alien	Kushwaha 254481 (LWG)
	<i>Solanum incanum</i> L.	Herb	Native	Kushwaha 254484 (LWG)
	<i>Solanum lycopersicum</i> L.	Shrub	Native	Kushwaha 254479 (LWG)
	<i>Solanum melongena</i> L.	Herb	Native	Kushwaha 254482 (LWG)
	<i>Solanum nigrum</i> L.	Herb	Native	Kushwaha 254489 (LWG)
	<i>Solanum surattense</i> Burm. f.	Herb	Native	Kushwaha 259254 (LWG)
	<i>Solanum viarum</i> Dunal	Herb	Alien	Kushwaha 254478 (LWG)
	<i>Solanum virginianum</i> L.	Herb	Native	Kushwaha 304183 (LWG)
	<i>Solanum tuberosum</i> L.	Herb	Alien	Kushwaha 304186 (LWG)
Sterculiaceae	<i>Byttneria herbacea</i> Roxb.	Herb	Native	Panigrahi 12517 (BSA)
	<i>Eriolaena hookeriana</i> Wight & Arn.	Tree	Native	Mishra 9882 (BSA)
	<i>Firmiana simplex</i> (L.) W.Wight	Tree	Native	Panigrahi 12027 (BSA)
	<i>Helicteres isora</i> L.	Shrub	Native	Kushwaha 304184 (LWG)
	<i>Melochia corchorifolia</i> L.	Herb	Native	Kushwaha 254483 (LWG)
	<i>Sterculia villosa</i> Roxb.	Tree	Native	Kushwaha 259857 (LWG)
	<i>Waltheria indica</i> L.	Herb	Native	Kushwaha 259248 (LWG)
Ulmaceae	<i>Holoptelea integrifolia</i> (Roxb.) Planch.	Tree	Native	Kushwaha 259856 (LWG)
	<i>Parasponica rugosa</i> Blume	Tree	Native	Kushwaha 259865 (LWG)

Family	Taxa	Growth form	Remarks	Collection reference
Verbenaceae	<i>Clerodendrum phlomidis</i> L.f.	Shrub	Native	Kushwaha 304185 (LWG)
	<i>Lantana camara</i> L.	Shrub	Alien	Kushwaha 254423 (LWG)
	<i>Lippia javanica</i> (Burm.f.) Spreng.	Shrub	Native	Kushwaha 304187 (LWG)
	<i>Phyla nodiflora</i> (L.) Greene	Shrub	Native	Mishra 9750 (BSA)
	<i>Tectona grandis</i> L.	Tree	Cultivated	Kushwaha 304182 (LWG)
Violaceae	<i>Hybanthus enneaspermus</i> (L.) F.Muell.	Herb	Native	Mishra 9913 (BSA)
	<i>Hybanthus linearifolius</i> (Vahl) Urb.	Herb	Native	Srivastava 21664 (LWG)
Vitaceae	<i>Ampelopsis glandulosa</i> (Wall.) Momiy.	Climber	Native	Kushwaha 259218 (LWG)
	<i>Cayratia trifolia</i> (L.) Domin	Climber	Native	Panigrahi 11167 (BSA)
	<i>Leea asiatica</i> (L.) Ridsdale	Shrub	Native	Kushwaha 304185 (LWG)
	MONOCOT			
Alismataceae	<i>Sagittaria sagittifolia</i> L.	Herb	Native	Kushwaha 254615 (LWG)
Amaryllidaceae	<i>Crinum asiaticum</i> L.	Herb	Native	Kushwaha 304103 (LWG)
Aponogetonaceae	<i>Aponogeton crispus</i> Thunb.	Herb	Native	Kushwaha 304115 (LWG)
	<i>Aponogeton natans</i> (L.) Engl. & K.Krause	Herb	Native	Panigrahi 3677 (BSA)
Araceae	<i>Alocasia macrorrhizos</i> (L.) G. Don	Herb	Native	Kushwaha 304117 (LWG)
	<i>Amorphophallus paeoniifolius</i> (Dennst.) Nicolson	Herb	Native	Kushwaha 304107 (LWG)
	<i>Colocasia esculenta</i> (L.) Schott	Herb	Cultivated	Kushwaha 304120 (LWG)
	<i>Pistia stratiotes</i> L.	Herb	Alien	Kushwaha 304124 (LWG)
	<i>Remusatia vivipara</i> (Roxb.) Schott	Herb	Native	Kushwaha 254453(LWG)
Arecaceae	<i>Phoenix acaulis</i> Roxb.	Shrub	Native	Kushwaha 304116 (LWG)
	<i>Phoenix rupicola</i> T.Anderson	Tree	Native	Kushwaha 304121 (LWG)
Asparagaceae	<i>Asparagus racemosus</i> Willd.	Shrub	Native	Kushwaha 304125 (LWG)
Colchicaceae	<i>Gloriosa superba</i> L.	Shrub	Native	Kushwaha 254333 (LWG)
Commelinaceae	<i>Commelina benghalensis</i> L.	Herb	Native	Kushwaha 304126 (LWG)
	<i>Commelina caroliniana</i> Walter	Herb	Native	Panigrahi 13763 (BSA)
	<i>Commelina diffusa</i> Burm.f.	Herb	Native	Panigrahi 9671 (BSA)
	<i>Commelina paludosa</i> Blume	Herb	Native	Panigrahi 12582 (BSA)
	<i>Cyanotis axillaris</i> (L.) D.Don ex Sweet	Herb	Native	Kushwaha 304128 (LWG)
	<i>Murdannia malabarica</i> (L.) G.Brückn.	Herb	Native	Panigrahi 13752 (BSA)
	<i>Murdannia nudiflora</i> (L.) Brenan	Herb	Native	Kushwaha 304130 (LWG)
	<i>Cyperaceae</i>	<i>Courtoisina cyperoides</i> (Roxb.) Soják	Herb	Native
	<i>Cyperus compactus</i> Retz.	Herb	Native	Panigrahi 3690 (BSA)
	<i>Cyperus compressus</i> L.	Herb	Native	Mishra 9863 (BSA)
	<i>Cyperus cyperoides</i> (L.) Kuntze	Herb	Native	Panigrahi 12594 (BSA)
	<i>Cyperus difformis</i> L.	Herb	Alien	Mishra 9868 (BSA)
	<i>Cyperus exaltatus</i> Retz.	Herb	Native	Panigrahi 13494 (BSA)
	<i>Cyperus iria</i> L.	Herb	Alien	Kushwaha 254380 (LWG)
	<i>Cyperus glomeratus</i> L.	Herb	Native	Kushwaha 254654 (LWG)
	<i>Cyperus leucocephalus</i> Retz.	Herb	Native	Mishra 9944 (BSA)
	<i>Cyperus malaccensis</i> Lam.	Herb	Native	Kushwaha 254635 (LWG)
	<i>Cyperus michelianus</i> subsp. <i>pygmaeus</i> (Rottb.) Asch. & Graebn.	Herb	Native	Panigrahi 12560 (BSA)
	<i>Cyperus niveus</i> Retz.	Herb	Native	Mishra 9908 (BSA)
	<i>Cyperus pangorei</i> Rottb.	Herb	Native	Kushwaha 254350 (LWG)
	<i>Cyperus rotundus</i> L.	Herb	Native	Kushwaha 254667 (LWG)

Family	Taxa	Growth form	Remarks	Collection reference
	<i>Cyperus tenuispica</i> Steud.	Herb	Native	Panigrahi 13904 (BSA)
	<i>Eleocharis geniculata</i> (L.) Roem. & Schult.	Herb	Native	Kushwaha 254642 (LWG)
	<i>Eleocharis palustris</i> (L.) Roem. & Schult	Herb	Native	Panigrahi 3681 (BSA)
	<i>Eleocharis quinqueflora</i> (Hartmann) O.Schwarz	Herb	Native	Kushwaha 254627 (LWG)
	<i>Fimbristylis bisumbellata</i> (Forssk.) Bubani	Herb	Native	Kushwaha 254485 (LWG)
	<i>Fimbristylis dichotoma</i> (L.) Vahl	Herb	Native	Mishra 9761 (BSA)
	<i>Fimbristylis falcata</i> (Vahl) Kunth	Herb	Native	Mishra 9992 (BSA)
	<i>Fimbristylis miliacea</i> (L.) Vahl	Herb	Native	Mishra 9811 (BSA)
	<i>Fimbristylis squarrosa</i> Vahl	Herb	Native	Mishra 9813 (BSA)
	<i>Fimbristylis tetragona</i> R.Br.	Herb	Native	Panigrahi 13832 (BSA)
	<i>Fuirena ciliaris</i> (L.) Roxb.	Herb	Native	Panigrahi 13711 (BSA)
	<i>Kyllinga brevifolia</i> Rottb.	Herb	Native	Kushwaha 264777 (LWG)
	<i>Pycreus flavidus</i> (Retz.) T.Koyama	Herb	Native	Mishra 9818 (BSA)
	<i>Pycreus polystachyos</i> (Rottb.) P.Beauv.	Herb	Native	Mishra 9874 (BSA)
	<i>Pycreus pumilus</i> (L.) Nees	Herb	Native	Mishra 9908 (BSA)
	<i>Schoenoplectiella articulata</i> (L.) Lye	Herb	Native	Kushwaha 254614 (LWG)
	<i>Schoenoplectiella juncooides</i> (Roxb.) Lye	Herb	Native	Mishra 9823 (BSA)
	<i>Scirpus supinus</i> L.	Herb	Native	Panigrahi 13668 (BSA)
	<i>Scleria levis</i> Retz.	Herb	Native	Panigrahi & Prasad 2035 (BSA)
Eriocaulaceae	<i>Eriocaulon guinguangulare</i> Linn	Herb	Native	Panigrahi 2638 (BSA)
Hydrocharitaceae	<i>Blyxa aubertii</i> Rich.	Herb	Native	Kushwaha 254486 (LWG)
	<i>Hydrilla verticillata</i> (L.f.) Royle	Herb	Native	Kushwaha 304132 (LWG)
	<i>Najas minor</i> All.	Herb	Native	Panigrahi 2636 (BSA)
	<i>Vallisneria spiralis</i> L.	Herb	Native	Kushwaha 304185 (LWG)
Lemnaceae	<i>Lemna aequinoctialis</i> Welw.	Herb	Native	Kushwaha 304129 (LWG)
	<i>Wolffia microscopica</i> (Griff.) Kurz	Herb	Native	Kushwaha 304133 (LWG)
Musaceae	<i>Musa balbisiana</i> Colla	Large Shrub	Cultivated	Kushwaha 304135 (LWG)
Orchidaceae	<i>Vanda tessellata</i> (Roxb.) Hook. ex G.Don	Herb	Native	Kushwaha 304136 (LWG)
	<i>Zeuxine strateumatica</i> (L.) Schltr.	Herb	Native	Kushwaha 304138 (LWG)
Poaceae	<i>Alloteropsis cimicina</i> (L.) Stapf	Herb	Native	Panigrahi 13856 (BSA)
	<i>Andropogon fastigiatus</i> Sw.	Herb	Native	Panigrahi 13807 (BSA)
	<i>Apluda mutica</i> L.	Herb	Native	Kushwaha 264766 (LWG)
	<i>Apocopis vaginata</i> Hack.	Herb	Native	Mishra 9909 (BSA)
	<i>Arundo donax</i> L.	Shrubs	Native	Kushwaha 254772 (LWG)
	<i>Aristida adscensionis</i> L.	Herb	Native	Panigrahi 12464 (BSA)
	<i>Aristida funiculata</i> Trin. & Rupr.	Herb	Native	Panigrahi & Prasad 2048 (BSA)
	<i>Aristida redacta</i> Stapf	Herb	Native	Panigrahi 9693 (BSA)
	<i>Aristida setacea</i> Retz.	Herb	Native	Panigrahi 3614 (BSA)
	<i>Arthraxon hispidus</i> (Thunb.) Makino	Herb	Native	Kushwaha 264727 (LWG)
	<i>Arthraxon lancifolius</i> (Trin.) Hochst.	Herb	Native	Panigrahi 8494 (BSA)
	<i>Arthraxon prionodes</i> (Steud.) Dandy	Herb	Native	Panigrahi 11125 (BSA)
	<i>Avena sativa</i> L.	Herb	Native	Kushwaha 254611 (LWG)
	<i>Arundinella setosa</i> Trin.	Herb	Native	Panigrahi 3513 (BSA)
	<i>Bothriochloa pertusa</i> (L.) A.Camus	Herb	Native	Mishra 9869 (BSA)
	<i>Bambusa bambos</i> (L.) Voss	Tree	Native	Kushwaha 254283 (LWG)
	<i>Chloris virgata</i> Sw.	Herb	Native	Kushwaha 254503 (LWG)

Family	Taxa	Growth form	Remarks	Collection reference
	<i>Chrysopogon fulvus</i> (Spreng.) Chiov.	Herb	Native	Kushwaha 254526 (LWG)
	<i>Coix aquatica</i> Roxb.	Herb	Native	Kushwaha 254490 (LWG)
	<i>Cymbopogon martini</i> (Roxb.) W.Watson	Herb	Native	Panigrahi 8499 (BSA)
	<i>Cynodon dactylon</i> (L.) Pers.	Herb	Native	Kushwaha 254607 (LWG)
	<i>Dactyloctenium aegyptium</i> (L.) Willd.	Herb	Native	Kushwaha 254665 (LWG)
	<i>Dendrocalamus strictus</i> (Roxb.) Nees	Herb	Native	Panigrari & Prasad 2037 (BSA)
	<i>Desmostachya bipinnata</i> (L.) Stapf	Herb	Native	Kushwaha 254625 (LWG)
	<i>Dichanthium annulatum</i> (Forssk.) Stapf	Herb	Native	Kushwaha 254454 (LWG)
	<i>Digitaria bicornis</i> (Lam.) Roem. & Schult.	Herb	Native	Panigrahi 20590 (BSA)
	<i>Digitaria ciliaris</i> (Retz.) Koeler	Herb	Native	Kushwaha 254490 (LWG)
	<i>Digitaria longiflora</i> (Retz.) Pers.	Herb	Native	Mishra 9774 (BSA)
	<i>Digitaria stricta</i> Roth	Herb	Native	Panigrahi 9665 (BSA)
	<i>Dimeria ornithopoda</i> Trin.	Herb	Native	Panigrahi 12330 (BSA)
	<i>Echinochloa colona</i> (L.) Link	Herb	Alien	Panigrahi 12063 (BSA)
	<i>Echinochloa crus-galli</i> (L.) P.Beauv.	Herb	Alien	Mishra 9779 (BSA)
	<i>Echinochloa stagnina</i> (Retz.) P.Beauv.	Herb	Native	Mishra 9947 (BSA)
	<i>Eleusine indica</i> (L.) Gaertn.	Herb	Native	Kushwaha 254601 (LWG)
	<i>Enteropogon dolichostachyus</i> (Lag.) Keng	Herb	Native	Kushwaha 254522 (LWG)
	<i>Eragrostis amabilis</i> (L.) Wight & Arn.	Herb	Native	Kushwaha 254623 (LWG)
	<i>Eragrostis japonica</i> (Thunb.) Trin.	Herb	Native	Kushwaha 254459 (LWG)
	<i>Eragrostis pilosa</i> (L.) P.Beauv.	Herb	Native	Kushwaha 264728 (LWG)
	<i>Eragrostis tremula</i> Hochst. ex Steud.	Herb	Native	Kushwaha 264796 (LWG)
	<i>Eragrostis unioloides</i> (Retz.) Nees ex Steud.	Herb	Native	Kushwaha 264730 (LWG)
	<i>Eremopogon foveolatus</i> (Delile) Stapf	Herb	Native	Panigrahi 12299 (BSA)
	<i>Eulalia trispicata</i> (Schult.) Henrard	Herb	Native	Panigrahi 4122 (BSA)
	<i>Eulaliopsis binata</i> (Retz.) C.E.Hubb.	Herb	Native	Panigrahi 12371 (BSA)
	<i>Hackelochloa granularis</i> (L.) Kuntze	Herb	Native	Panigrahi 13743 (BSA)
	<i>Hemarthria compressa</i> (L.f.) R.Br.	Herb	Native	Panigrahi 12420 (BSA)
	<i>Heteropogon contortus</i> (L.) P.Beauv. ex Roem. & Schult.	Herb	Native	Kushwaha 264742 (LWG)
	<i>Hordeum vulgare</i> L.	Herb	Cultivated	Kushwaha 304110 (LWG)
	<i>Hygroryza aristata</i> (Retz.) Nees ex Wight & Arn.	Herb	Native	Kushwaha 254492 (LWG)
	<i>Imperata cylindrica</i> (L.) Raeusch.	Herb	Native	Panigrahi 12407 (BSA)
	<i>Isachne globosa</i> (Thunb.) Kuntze	Herb	Native	Panigrahi 8467 (BSA)
	<i>Ischaemum rugosum</i> Salisb.	Herb	Native	Panigrahi 4060 (BSA)
	<i>Iseilema laxum</i> Hack.	Herb	Native	Mishra 9726 (BSA)
	<i>Leptochloa chinensis</i> (L.) Nees	Herb	Native	Panigrahi 4121 (BSA)
	<i>Leptochloa panicea</i> (Retz.) Ohwi	Herb	Native	Kushwaha 254488 (LWG)
	<i>Melanocentris jacquemontii</i> Jaub. & Spach	Herb	Native	Panigrahi & Prasad 3041 (BSA)
	<i>Ophiuros exaltatus</i> (L.) Kuntze	Herb	Native	Kushwaha 254309 (LWG)
	<i>Oplismenus hirtellus</i> (L.) P.Beauv.	Herb	Native	Kushwaha 254221 (LWG)
	<i>Oryza glaberrima</i> Steud.	Herb	Native	Panigrahi 12030 (BSA)
	<i>Oryza rufipogon</i> Griff.	Herb	Cultivated	Panigrahi 13402 (BSA)
	<i>Oryza sativa</i> L.	Herb	Cultivated	Kushwaha 304112 (LWG)
	<i>Panicum notatum</i> Retz.	Herb	Native	Panigrahi 13641 (BSA)
	<i>Panicum paludosum</i> Roxb.	Herb	Native	Panigrahi 12062 (BSA)

Family	Taxa	Growth form	Remarks	Collection reference
	<i>Paspalidium flavidum</i> (Retz.) A.Camus	Herb	Native	Panigrahi 12229 (BSA)
	<i>Paspalum scrobiculatum</i> L.	Herb	Native	Mishra 9770 (BSA)
	<i>Pennisetum glaucum</i> (L.) R.Br.	Herb	Native	Panigrahi 12477 (BSA)
	<i>Pennisetum pedicellatum</i> Trin.	Herb	Native	Kushwaha 254513 (LWG)
	<i>Perotis indica</i> (L.) Kuntze	Herb	Native	Mishra 9867 (BSA)
	<i>Phalaris minor</i> Retz.	Herb	Native	Kushwaha 254631 (LWG)
	<i>Pogonatherum paniceum</i> (Lam.) Hack.	Herb	Native	Panigrahi 4061 (BSA)
	<i>Polypogon monspeliensis</i> (L.) Desf.	Herb	Native	Kushwaha 254606 (LWG)
	<i>Pseudoraphis spinescens</i> (R.Br.) Vickery	Herb	Native	Panigrahi 2027 (BSA)
	<i>Pseudosorghum fasciculare</i> (Roxb.) A.Camus	Herb	Native	Panigrahi 13775 (BSA)
	<i>Saccharum bengalense</i> Retz.	Herb	Native	Panigrahi 13475 (BSA)
	<i>Saccharum spontaneum</i> L.	Herb	Alien	Panigrahi 12659 (BSA)
	<i>Sacciolepis interrupta</i> (Willd.) Stapf	Herb	Native	Panigrahi 13616 (BSA)
	<i>Sacciolepis myosuroides</i> (R.Br.) A.Camus	Herb	Native	Panigrahi & Prasad 2918 (BSA)
	<i>Schizachyrium brevifolium</i> (Sw.) Buse	Herb	Native	Panigrahi & Prasad 2520 (BSA)
	<i>Schizachyrium exile</i> (Hochst.) Pilg.	Herb	Native	Panigrahi 13606 (BSA)
	<i>Schoenefeldia gracilis</i> Kunth	Herb	Native	Panigrahi 9625 (BSA)
	<i>Sehima nervosum</i> (Rottler) Stapf	Herb	Native	Panigrahi & Prasad 2071 (BSA)
	<i>Setaria intermedia</i> Roem. & Schult.	Herb	Native	Panigrahi 12552 (BSA)
	<i>Setaria pumila</i> (Poir.) Roem. & Schult.	Herb	Native	Kushwaha 264788 (LWG)
	<i>Setaria verticillata</i> (L.) P.Beauv.	Herb	Native	Panigrahi 13886 (BSA)
	<i>Sorghum bicolor</i> (L.) Moench	Herb	Cultivated	Kushwaha 254453 (LWG)
	<i>Themeda quadrivalvis</i> (L.) Kuntze	Herb	Native	Kushwaha 254514 (LWG)
	<i>Thysanolaena latifolia</i> (Roxb. ex Hornem.) Honda	Herb	Native	Panigrahi 12664 (BSA)
	<i>Tragus racemosus</i> (L.) All.	Herb	Native	Panigrahi & Prasad 3674 (BSA)
	<i>Triticum aestivum</i> L.	Herb	Cultivated	Kushwaha 304113 (LWG)
	<i>Urochloa panicoides</i> P.Beauv.	Herb	Native	Singh & Saha EBH 506 (LWG)
Pontederiaceae	<i>Eichhornia crassipes</i> (Mart.) Solms	Herb	Alien	Kushwaha 254400 (LWG)
	<i>Monochoria vaginalis</i> (Burm.f.) C.Presl	Herb	Alien	Kushwaha 304141 (LWG)
Potamogetonaceae	<i>Potamogeton crispus</i> L.	Herb	Native	Kushwaha 304185 (LWG)
	<i>Potamogeton nodosus</i> Poir.	Herb	Native	Panigrahi 13708 (BSA)
Smilacaceae	<i>Smilax guianensis</i> Vitman	Herb	Native	Panigrahi 13675 (BSA)
Typhaceae	<i>Typha domingensis</i> Pers.	Herb	Native	Kushwaha 254641 (LWG)
	<i>Typha elephantina</i> Roxb.	Herb	Native	Panigrahi 12086 (BSA)
Xanthorrhoeaceae	<i>Asphodelus tenuifolius</i> Cav.	Herb	Native	Panigrahi 12655 (BSA)
Zingiberaceae	<i>Cheilocostus speciosus</i> (J. Koenig.) C. D. Specht	Herb	Native	Kushwaha 304134 (LWG)
	<i>Curcuma aromatica</i> Salisb.	Herb	Cultivated	Kushwaha 304143 (LWG)
	<i>Curcuma longa</i> L.	Herb	Cultivated	Kushwaha 304105 (LWG)
	<i>Zingiber officinale</i> Roscoe	Herb	Native	Kushwaha 254282 (LWG)

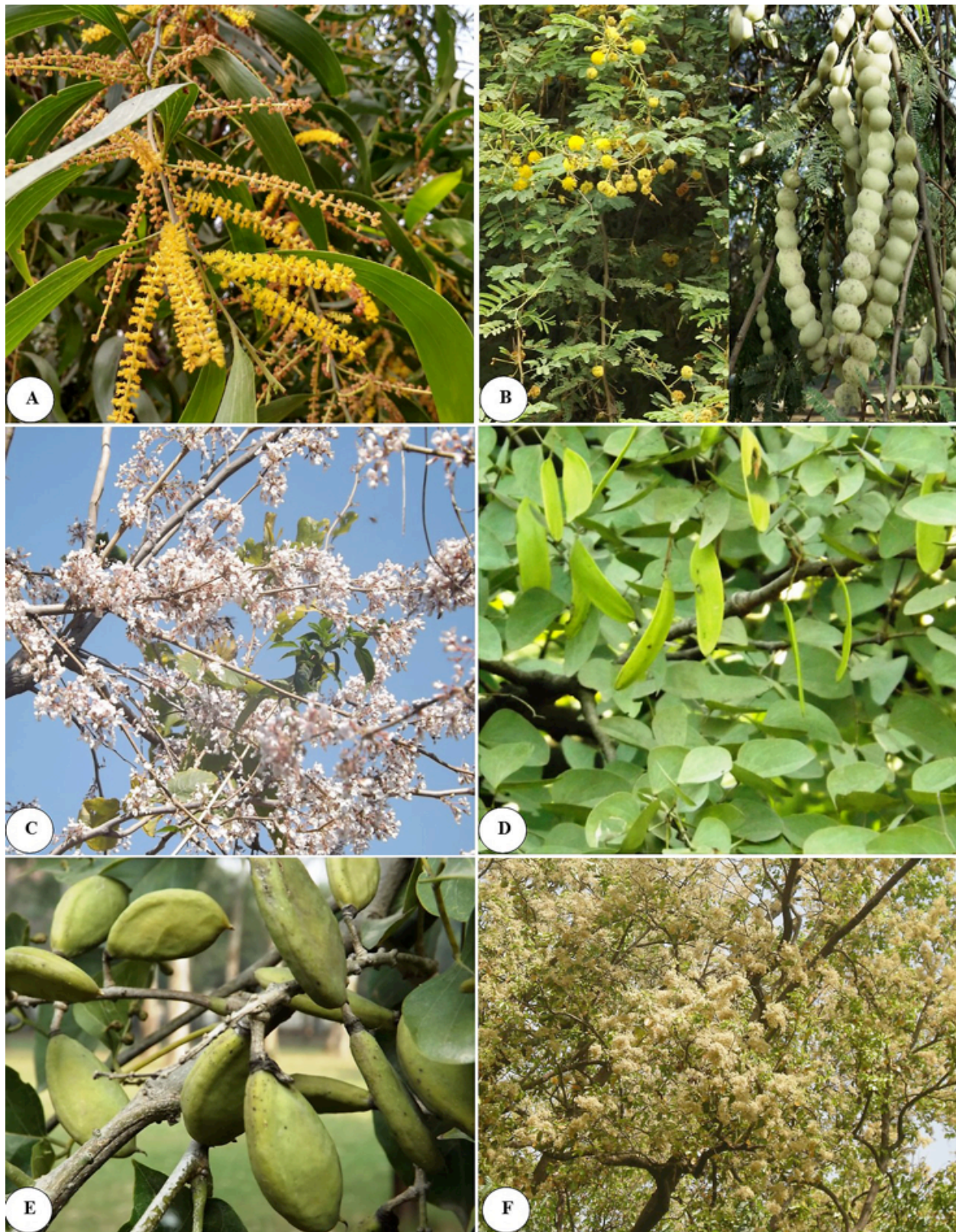


Image 2. A - *Acacia auriculiformis* Benth.; B - *Acacia nilotica* (L.) Delile; C - *Desmodium oojenenensis* (Roxb.) H. Ohasi; D - *Hardwickia binata* Roxb.; E - *Pongamia pinnata* (L.) Pierre; F - *Shorea robusta* Gaertn.



Image 3. A - *Commelina benghalensis* L.; B - *Gloriosa superba* L.; C - *Monochoria vaginalis* (Burm. f.) C. Presl; D - *Pistia stratiotes* L.; E - *Sagittaria sagittifolia* L. i; F - *Typha domingensis* Pers.

- Uttar Pradesh, pp. 162–166. In: Gupta, S., K. K. Tiwari & H. Kumar (eds.). *Mainstreaming Biodiversity; Sustaining People and their Livelihoods*. U. P. State Biodiversity Board, Lucknow, U.P., India, 172pp.
- Kumar, A., O. Bajpai, A.K. Mishra, N. Sahu, S.K. Behera, S.S. Bargali & L.B. Chaudhary (2015)**. A checklist of the flowering plants of Katerniaghat Wildlife Sanctuary, Uttar Pradesh, India. *Journal of Threatened Taxa* 7(7): 7309–7408; <http://dx.doi.org/10.11609/JoTT.o3257.7309-408>
- Lawrence, G.H.M. (1951)**. *Taxonomy of vascular plants*. Oxford IBH Publishing Co. Pvt. Ltd., New Delhi, 823pp.
- Mishra, N.K., R. Das & D.K. Srivastava (2012)**. Ethno-medicinal weeds of veterinary importance from Dullapathar frontier region of district Sonbhadra (south east U.P.). *Indian Journal of Plant Sciences* 2(1): 109–111.
- Rau, M.A. (1969)**. Flora of the Upper Gangetic Plain and the adjacent Siwalik and sub-himalayan tracts — Checklist. *The Bulletin of the Botanical Survey of India*, Dehra Dun 2: 10–87.
- Saini, D.C. (2005)**. Flora of Bahraich district, Uttar Pradesh I–VI. *Journal of Economic and Taxonomic Botany* 29(3–4): 528–920.
- Sharma, A.K. & J.S. Dhakre (1995)**. *Flora of Agra District*. Botanical Survey of India, Kolkata, 356pp.
- Sharma, B.D. & D.S. Pandey (1984)**. *Exotic Flora of Allahabad District*. Botanical Survey of India, Kolkata, 160+viii pp.
- Singh, A. & N.K. Dubey (2012)**. An ethnobotanical study of medicinal plants in Sonbhadra District of Uttar Pradesh, India with reference to their infection by foliar fungi. *Journal of Medicinal Plants Research* 6(14): 2727–2746.
- Singh, A.K., A.S. Raghubanshi & J.S. Singh (2002)**. Medico-ethnobotany of tribal of Sonaghati of Sonbhadra district, Uttar Pradesh, India. *Journal of Ethnopharmacology* 81(1): 31–41.
- Singh, A., G.S. Singh & P.K. Singh (2012)**. Medico-ethnobotanical inventory of Renukoot forest division of district Sonbhadra, Uttar Pradesh, India. *Indian Journal of Natural Products and Resources* 3(3): 448–457.
- Singh, K.K. (1997)**. *Flora of Dudhwa National Park*. Bishen Singh Mahendra Pal Singh, Dehra Dun, 516pp.
- Singh, N.P. (1969)**. Flora of Bulandshahr District. *The Bulletin of the Botanical Survey of India*, Dehra Dun 11: 1–22.
- Singh, P.K., K. Vinod, R.K. Tiwari, A. Sharma, C.V. Rao & R.H. Singh (2010)**. Medico-Ethnobotany of 'Chatara' Block of District Sonbhadra, Uttar Pradesh, India. *Advances in Biological Research* 4(1): 65–80.
- Singh, S.C. & S.P.S. Khanuja (2006)**. *Lucknow Flora*. Central Institute of Medicinal and Aromatic Plants, Lucknow, U.P., 522+viii pp.
- Srivastava, G.D. (1938)**. *Flora of Allahabad, part 2*. Cornell University, New York, 364pp.
- Srivastava, J.G. (1955)**. A note on the flora of Mirzapur (U.P.). *Journal of the Bombay Natural History Society* 53: 152–153.
- Srivastava, T.N. (1976)**. *Flora Gorakhpurensis*. Today & Tomorrow's Printer & Publisher, New Delhi, 411+XLpp.
- Verma, B.K. & V. Ranjan (1995)**. Flora of Lalitpur district (U.P.), pp. 87–94. In: Pandey, A.K. (ed.). *Taxonomy and Biodiversity*. CBS Publishers & Distributors Pvt. Ltd., New Delhi, 232pp.
- Uniyal, S.K., A. Swami & B.P. Uniyal (1999)**. *Monocotyledonous Plants of Uttar Pradesh: A Checklist (excluding Cyperaceae and Poaceae)*. Bishen Singh Mahendra Pal Singh, Dehra Dun, 142pp.





OPEN ACCESS



The Journal of Threatened Taxa is dedicated to building evidence for conservation globally by publishing peer-reviewed articles online every month at a reasonably rapid rate at www.threatenedtaxa.org. All articles published in JoTT are registered under [Creative Commons Attribution 4.0 International License](https://creativecommons.org/licenses/by/4.0/) unless otherwise mentioned. JoTT allows unrestricted use of articles in any medium, reproduction, and distribution by providing adequate credit to the authors and the source of publication.

ISSN 0974-7907 (Online); ISSN 0974-7893 (Print)

August 2018 | Vol. 10 | No. 9 | Pages: 12147–12298

Date of Publication: 26 August 2018 (Online & Print)

DOI: 10.11609/jott.2018.10.9.12147-12298

www.threatenedtaxa.org

Article

Appearances are deceptive: molecular phylogeny recovers the Scaly Gecko *Hemidactylus scabriceps* (Reptilia: Squamata: Gekkonidae) as a member of a scansorial and rupicolous clade

-- Achyuthan N. Srikanthan, Gandla Chethan Kumar, Aishwarya J. Urs & Sumaithangi Rajagopalan Ganesh, Pp. 12147–12162

Communications

Foraging and roosting ecology of the Lesser Dog-faced Fruit Bat *Cynopterus brachyotis* (Mammalia: Chiroptera: Pteropodidae) in southern India

-- T. Karuppudurai & K. Sripathi, Pp. 12163–12172

Diversity and status of avifauna in man-made sacred ponds of Kurukshetra, India

-- Parmesh Kumar & Archana Sharma, Pp. 12173–12193

Diversity and distribution of freshwater turtles (Reptilia: Testudines) in Goa, India

-- Trupti D. Jadhav, Nitin S. Sawant & Soorambail K. Shyama, Pp. 12194–12202

Breeding behaviour of the Coromandel Damselfly *Ceriatrigon coromandelianum* (Fabricius) (Zygoptera: Coenagrionidae) in central India: copulation

-- Nilesh R. Thaokar, Payal R. Verma & Raymond J. Andrew, Pp. 12203–12209

The status assessment of *Corynandra viscosa* subsp. *nagarjunakondensis* (Magnoliopsida: Cleomaceae), endemic to Nagarjunakonda, Andhra Pradesh, India

-- Veeravarapu Hanumantha Rao, Vaidyula Vasudeva Rao, Anuti Baleeshwar Reddy & Vatsavaya Satyanarayana Raju, Pp. 12210–12217

Short Communications

New records of termites (Blattodea: Termitidae: Syntermitinae) from Colombia

-- Olga Patricia Pinzón & Daniel Castro, Pp. 12218–12225

New reports of thrips (Thysanoptera: Terebrantia: Thripidae) from India

-- R.R. Rachana & R. Varatharajan, Pp. 12226–12229

New records of earthworm fauna (Oligochaeta: Glossoscolecidae and Megascolecidae) collected from Satkosia-Baisipalli Wildlife Sanctuary of Odisha, India

-- Rinku Goswami, Pp. 12230–12234

Diversity and endemism of butterflies of montane forests of Eravikulam National Park in the Western Ghats, India

-- E.R. Sreekumar, S. Nikhil, K.G. Ajay & P.O. Nameer, Pp. 12235–12246

Angiosperm diversity of Sonbhadra District, Uttar Pradesh: a checklist

-- Arun Kumar Kushwaha, Lalit Mohan Tewari & Lal Babu Chaudhary, Pp. 12247–12269

Contribution to the Macromycetes of West Bengal, India: 23–27

-- Meghma Bera, Soumitra Paloi, Arun Kumar Dutta, Prakash Pradhan, Anirban Roy & Krishnendu Acharya, Pp. 12270–12276

Notes

Animal-fungal interactions 2: first report of mycophagy by the Eastern European Hedgehog *Erinaceus concolor* Martin, 1837 (Mammalia: Eulipotyphla: Erinaceidae)

-- Todd F. Elliott, James M. Trappe & Aziz Türkoğlu, Pp. 12277–12279

Rostral anomaly in a juvenile Spiny Butterfly Ray *Gymnura altavela* (Linnaeus, 1758) (Elasmobranchii: Myliobatiformes: Gymnuridae) from the Canary Islands

-- Filip Osaer & Krupskaya Narváez, Pp. 12280–12281

A record after 52 years, and additional description of the emesine assassin bug *Emesopsis nubila* (Hemiptera: Reduviidae: Emesinae) from western India

-- Balasaheb V. Sarode, Nikhil U. Joshi, Pratik P. Pansare & Hemant V. Ghatge, Pp. 12282–12285

***Gentiana aperta* (Gentianaceae) - a new record to India from Ladakh Himalaya**

-- Mohd Shabir, Priyanka Agnihotri, Jay Krishan Tiwari & Tariq Husain, Pp. 12286–12289

Notes on *Cinnamomum travancoricum* Gamble (Lauraceae) - a Critically Endangered species from the southern Western Ghats, India

-- A.J. Robi, P. Sujanalal & P.S. Udayan, Pp. 12290–12293

A reassessment and lectotypification of the name *Striga masuria* (Buch.-Ham. ex Benth.) Benth. (Orobanchaceae) and its collection from the Western Ghats of India

-- M. Omalsree & V.K. Sreenivas, Pp. 12294–12297

Miscellaneous

National Biodiversity Authority

Partners



Member



Publisher & Host

