



The Journal of Threatened Taxa (JoTT) is dedicated to building evidence for conservation globally by publishing peer-reviewed articles online every month at a reasonably rapid rate at www.threatenedtaxa.org. All articles published in JoTT are registered under [Creative Commons Attribution 4.0 International License](https://creativecommons.org/licenses/by/4.0/) unless otherwise mentioned. JoTT allows unrestricted use, reproduction, and distribution of articles in any medium by providing adequate credit to the author(s) and the source of publication.

Journal of Threatened Taxa

Building evidence for conservation globally

www.threatenedtaxa.org

ISSN 0974-7907 (Online) | ISSN 0974-7893 (Print)

COMMUNICATION

THE DISTRIBUTIONAL PATTERN OF BENTHIC MACROINVERTEBRATES IN A SPRING-FED FOOTHILL TRIBUTARY OF THE GANGA RIVER, WESTERN HIMALAYA, INDIA

Vijay Prakash Semwal & Asheesh Shivam Mishra

26 September 2019 | Vol. 11 | No. 12 | Pages: 14511–14517

DOI: 10.11609/jott.4648.11.12.14511-14517



For Focus, Scope, Aims, Policies, and Guidelines visit <https://threatenedtaxa.org/index.php/JoTT/about/editorialPolicies#custom-0>

For Article Submission Guidelines, visit <https://threatenedtaxa.org/index.php/JoTT/about/submissions#onlineSubmissions>

For Policies against Scientific Misconduct, visit <https://threatenedtaxa.org/index.php/JoTT/about/editorialPolicies#custom-2>

For reprints, contact [<ravi@threatenedtaxa.org>](mailto:ravi@threatenedtaxa.org)

The opinions expressed by the authors do not reflect the views of the Journal of Threatened Taxa, Wildlife Information Liaison Development Society, Zoo Outreach Organization, or any of the partners. The journal, the publisher, the host, and the partners are not responsible for the accuracy of the political boundaries shown in the maps by the authors.

Partner



صندوق محمد بن زايد
للمحافظة على
الكائنات الحية

The Mohamed bin Zayed
SPECIES CONSERVATION FUND

Member



Publisher & Host



Threatened Taxa



THE DISTRIBUTIONAL PATTERN OF BENTHIC MACROINVERTEBRATES IN A SPRING-FED FOOTHILL TRIBUTARY OF THE GANGA RIVER, WESTERN HIMALAYA, INDIA

Vijay Prakash Semwal¹ & Asheesh Shivam Mishra²

¹ Department of Zoology, Government Post Graduate College New Tehri, Tehri Garhwal, Uttarakhand 249001, India.

² Department of Zoology, Nehru Gram Bharati (Deemed to be University) Prayagraj, Uttar Pradesh 221505, India.

¹vpsemwal75@gmail.com, ²shivam_a2000@yahoo.co.in (corresponding author)

ISSN 0974-7907 (Online)
ISSN 0974-7893 (Print)

PLATINUM
OPEN ACCESS



Abstract: Benthic macroinvertebrates play important ecosystem roles in the cycling and outflow of nutrients. The benthos transforms organic detritus from sedimentary storage into dissolved nutrients that can be mixed into overlying waters and used by rooted plants (macrophytes) and algae (phytoplankton) to enhance primary productivity. This study examined the distribution pattern of benthic macroinvertebrates in a lesser Himalayan foothill stream from the headwaters (2,200m) to mouth (375m). Five stations (S1 to S5) were established along the 43-km course of the stream. Samples were collected at bi-monthly intervals from January to December 2009. The total density of the benthic macroinvertebrate community increased with decreasing altitude and differed significantly among stations. Dominant orders were Diptera at S1 (Simuliidae, 27%) & S5 (Chironomidae 24%), Trichoptera at S2 (Limnephilidae 16%) & S3 (Hydropsychidae 9.9%), and Ephemeroptera (Heptageniidae 9.2%) at S4. Principal component analysis revealed that the characteristic taxa were Simuliidae at S1, Limnephilidae at S2, Hydropsychidae, Rhyacophilidae, Tipulidae, Perlodidae, Dryopidae & Notonectidae at S3, Heptageniidae at S4, and Chironomidae, Siphonuridae, & Agrionidae at S5. Cluster analysis showed one large cluster comprising S1 and S2 as sub-groups with resemblance to S3-S4, and S5 as an outlier. The similarity between the stations S3-S4 was attributed to similar land-use pattern (agriculture) and stream order (II Order), while S1 and S2 were slightly similar due to partial similar forest type (oak forest at S1, pine-oak forest at S2) and stream order. At S5, however, the considerable change in forest type (mixed forest) land-use and stream order (III Order) caused S5 as an outlier in cluster. The variations in the abundant and characteristics taxon at different stations were attributed to change in substratum and land-use patterns.

Keywords: Ganga, lesser Himalaya, altitudinal variation, dominants, Diptera, Trichoptera.

बैथिक मैक्रोइनवर्टेब्रेट पारिस्थितिकी तंत्र की साइकिल चलाने और पोषक तत्वों के बहिर्वाह में महत्वपूर्ण भूमिका निभाता है। बैथोस कार्बनिक डिट्रिट को तलछटी भंडारण से विघटित पोषक तत्वों में बदल देता है जो प्राथमिक उत्पादकता को बढ़ाने के लिए जड़ वाले पौधों (मैक्रोफाइट्स) और शैवाल (फाइटोप्लांकटन) द्वारा पानी में मिलाया जा सकता है। इस अध्ययन में हेडवॉटर (2,200m) से मुँह (375m) तक कम हिमालयी तलछटी की धारा में बैथिक मैक्रोइनवर्टेब्रेट के वितरण पैटर्न की जांच की गई। धारा के 43 किलोमीटर के रास्ते में पांच स्टेशन (01 से 05) स्थापित किए गए थे। जनवरी से दिसंबर 2009 के बीच द्वि-मासिक अंतराल पर नमूने एकत्र किए गए थे। मैक्रोइनवर्टेब्रेट समुदाय की कुल घनत्व कम ऊँचाई के साथ बढ़ी और स्टेशनों के बीच काफी भिन्नता थी। 01 पर डिप्टेरा (27%) और एस 5 (चिरोनोमिडे 24%), एस 2 पर त्रिचोप्टेरा (लिम्नेफिलिडी 16%) और एस 3 (हाइड्रोप्सिचिडे 9.9%), और एफिमैरोप्टेरा (हेप्टेनैजिडे 9.2%) एस 4 प्रमुख टैक्सा थे। प्रधान घटक विश्लेषण से पता चला है कि एस 1 में सिमुलिडे, एस 2 में लिम्नेफिलिडे, हाइड्रोप्सिचिडे, रैकफिलिडे, टिपुलिडी, पेलोडिडे, ड्रायोपिडे और एस 3 में हिरोपेनेडी, चिरोनिडा और चिरोनिडिडा में विशेष टैक्सा थे। क्लस्टर विश्लेषण में 03 और 02 के एक बड़े क्लस्टर को 03-04, और 05 के एक समानता के साथ उप-समूह के रूप में दिखाया गया है। 03-04 स्टेशनों के बीच समानता को समान भूमि-उपयोग पैटर्न (कृषि) और स्ट्रीम ऑर्डर (II ऑर्डर) के लिए जिम्मेदार ठहराया गया था, जबकि 01 और 02 आंशिक समान वन प्रकार (01 में ओक वन, पाइन-ओक वन के कारण समान थे) 02 पर और स्ट्रीम ऑर्डर 05 में, हालांकि, वन प्रकार (मिश्रित वन) भूमि-उपयोग और धारा क्रम (III ऑर्डर) में काफी बदलाव से क्लस्टर में बाहरी रूप से 05 का कारण बना। विभिन्न स्टेशनों पर प्रचुर और विशेषताओं वाले टैक्सों में बदलाव को सब्सट्रेट और लैंड-यूज पैटर्न में बदलाव के लिए जिम्मेदार ठहराया गया था।

DOI: <https://doi.org/10.11609/jott.4648.11.12.14511-14517> | ZooBank: urn:lsid:zoobank.org:pub:275D813E-ECB2-4D8A-9C6B-CCF91CF3B564

Editor: Tomáš Ditrich, University of South Bohemia in Ceske Budejovice, Czech Republic.

Date of publication: 26 September 2019 (online & print)

Manuscript details: #4648 | Received 21 October 2018 | Final received 09 July 2019 | Finally accepted 15 August 2019

Citation: Semwal, V.P. & A.S. Mishra (2019). The distributional pattern of benthic macroinvertebrates in a spring-fed foothill tributary of the Ganga River, western Himalaya, India. *Journal of Threatened Taxa* 11(12): 14511–14517. <https://doi.org/10.11609/jott.4648.11.12.14511-14517>

Copyright: © Semwal & Mishra 2019. Creative Commons Attribution 4.0 International License. JoTT allows unrestricted use, reproduction, and distribution of this article in any medium by adequate credit to the author(s) and the source of publication.

Funding: None.

Competing interests: The authors declare no competing interests.

For Author details & Author contribution see end of this article.

Acknowledgements: The authors acknowledge the academic support granted by Prof. H.R. Singh, former Vice Chancellor, University of Allahabad, and former professor & head Prof. J.P. Bhatt, Department of Zoology & Biotechnology, H.N.B. Garhwal University, Srinagar, Uttarakhand, India.



INTRODUCTION

Benthic macroinvertebrates are important components of aquatic communities, where they can be found in sediment and accumulated leaves, and in association with macrophytes between rocks, interacting with a wide range of environmental conditions (Moretti & Callisto 2005; Würdig et al. 2007). Community species distributions vary with water characteristics (Pereira & De Luca 2003; Silveira et al. 2006). Benthic organisms are sensitive to the habitat characteristics and substratum (Buss et al. 2004; Mishra & Nautiyal 2016), water temperature (Camargo & Voelz 1998; Mishra & Nautiyal 2011), pH (Sandin & Johnson 2004), electrical conductivity (Buss et al. 2002), riparian vegetation (Silveira et al. 2006), sedimentation (Smith & Lamp 2008), and land-use (Collier et al. 2000; Kratzer et al. 2006; Nautiyal et al. 2017). Thus they can be used as indicators of the functional status of rivers (Jiang et al. 2011; Mishra & Nautiyal 2013a).

In the lesser Himalayan region, benthic macroinvertebrates have been investigated in glacier and spring fed rivers/streams (Rundle et al. 1993; Ormerod et al. 1994; Singh et al. 1994; Nautiyal 1997; Julka et al. 1999; Kannel et al. 2007; Neesemann et al. 2011; Mishra et al. 2013c; Nautiyal et al. 2013; Nautiyal & Mishra 2014). Few studies have examined the foothill¹ region of western Himalaya, where streams often have springs as their source. We studied a spring-fed stream in the foothill region (Fig. 1a) that flows into the Ganga at Shimpuri, 15km upstream of Rishikesh. The rapids between Shimpuri and Rishikesh are a popular water-rafting zone, and the stream is under severe anthropogenic stress owing to extensive use of its banks for night camping. In the middle and upper reaches stress comes from water extraction for agriculture. Our study of benthic macroinvertebrate fauna is intended to help detect environmental changes in the stream due to human activity in the vicinity.

MATERIALS AND METHODS

Study Area

Most foothill streams that discharge into the Ganga between Shimpuri and Rishikesh are steep and short, and many dry up in summer. Hiyunl Nadi is a perennial

stream with a 43km course that was chosen as a representative of a foothill stream. There are a number of streams of moderate length but in the Doon Valley and not the hills except for Song that drains eastern Doons. The Kho is one such like Hiyunl but not of this kind. The Hiyunl flows down from an elevation of 2,400m north-west direction and meets the Ganga River at 375m. By virtue of this it exhibits a rapid transition from alpine to sub-tropical conditions. Bemunda Gad, Pilri Gad, and Chamol Gad are its prominent tributaries. The Hiyunl basin lies between 30.258–30.440°N and 78.708–75.084°E, covering an area of 167.50km² (Table 1, Fig. 1b) that is rich in limestone (Kumar et al. 2017). There is some confusion regarding its name: Henval in headwaters (toposheet 53 J/7; <https://zenodo.org/record/1216911>) and Hiyunl in its lower stretch (toposheet 53 J/8; <https://zenodo.org/record/1216913>). Some studies carried out on the Ganga River between Devprayag and Haridwar have conveniently called it Henval, and another local name is Huinl (NH 44-5, Series U502).

Sampling

Five stations were selected in the stream on the basis of variation in land-use type (forest and/or agriculture). Sampling was performed at bi-monthly intervals from January 2010 to December 2010 (Table 1). Samples were taken from area of 0.09m² with respect to habitat type (20 samples per station). The standard methods for sampling (Singh & Nautiyal 1990; Nautiyal & Mishra 2013b) and identification (Burks 1953; Pennak 1953; Edmunds et al. 1976) were adopted. Family level counts were performed to obtain abundance (as %). Significant difference in density between stations was determined using the Mann–Whitney (U) test, and among the stations using the Kruskal–Wallis (H) test (PAST software <http://nhm2.uio.no/norlex/past>). Principal Component Analysis (PCA) was used to determine the characteristic taxa at each station (CANOCO ver 4.5; ter Braak & Smilauer 2002).

RESULTS AND DISCUSSION

Physicochemical characteristics varied among stations. The air (4–42°C) and water temperature (3–25°C) increased from S1 to S5 as did dissolved oxygen (7.4–12.5 mg l⁻¹), pH (6.8–7.3), conductivity (80–350 µS⁻¹), and current velocity (0.1–0.48msec⁻¹).

The total mean density of macroinvertebrates increased from S1 to S5, with significant differences observed between successive stations (Table 1). Singh &

¹ The **foothills** of a mountain or a range of mountains are the lower hills or mountains around its base).

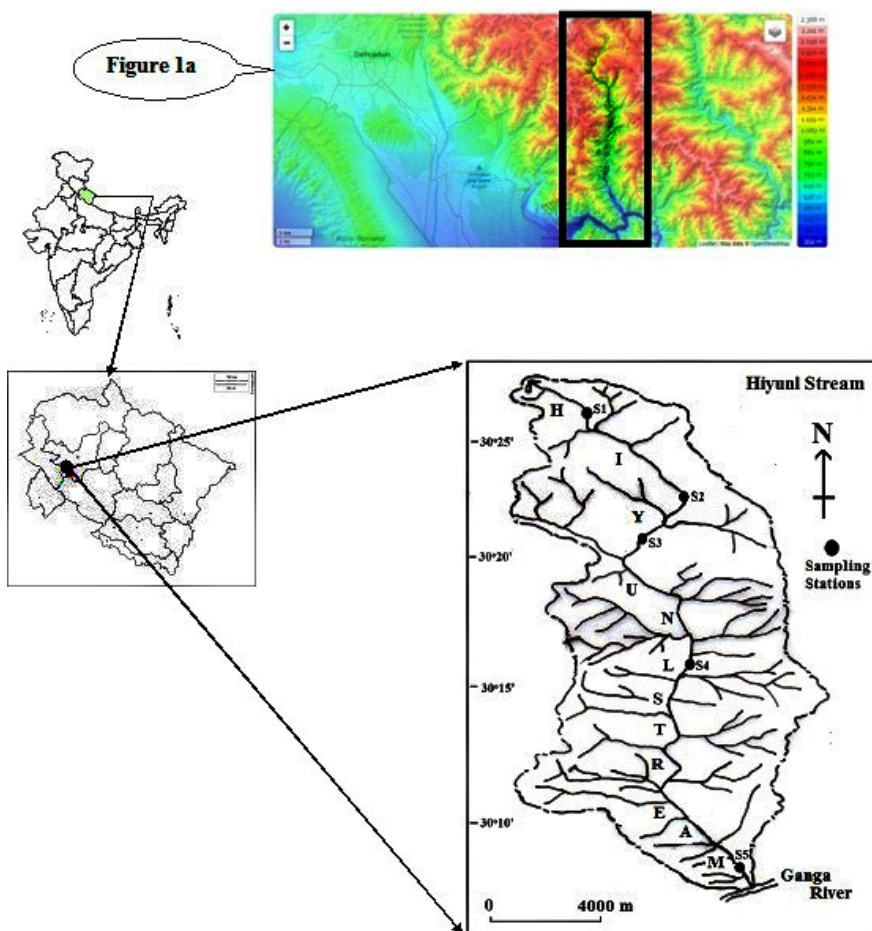


Figure 1 b

Figure 1a&b. a—Terrain map to show location of the Hiyunl Stream in foothills. Flat terrain at Rishikesh extending towards Haridwar and Dehradun while high rise lesser Himalayan mountains to right with elevation reaching over 2,400m even in foothills. b—Location of Uttarakhand in India and of Hiyunl Stream in Uttarakhand. The sampling stations (S1 to S5) are indicated in the map via black circle.

Nautiyal (1990) suggested that density increased in the mouth zone of the Himalayan river Bhagirathi. In central Indian rivers, the density also increased in the mouth zone of Paisuni River (Mishra & Nautiyal 2011) but decreased in Tons (Mishra & Nautiyal 2013b). The sudden decline of density at S4, however, was attributed to the dumping of waste materials into the river from road construction, which caused habitat loss and fragmentation resulting in a decline in the benthic macroinvertebrate community. The decline is also attributed to anthropogenic activity such as extraction of water for agriculture (Mishra & Nautiyal 2013b).

Taxonomic composition

Diptera (81%) was dominant at S1, Trichoptera at S2 (75%), S3 (80.7%) and S4 (54.5%). At S5 Ephemeroptera (69.3%) was dominant. The composition of other taxa

varied at each station (Table 2). Diptera, Trichoptera and Ephemeroptera dominated the assemblages from S1 to S5. Odonates and annelids exhibited a similar profile, though their share was low in the community. Diptera declined abruptly from S1 to S2, and increased from S3 to S5. The communities differed structurally primarily on account of proximity to a snow line of approximately 150km aerial length, with high gradients in mountain streams. At the family level, Simuliidae was the most abundant taxon at S1 followed by Limnephilidae, while Limnephilidae and Hydropsychidae were dominant at S2 and S3, respectively. Heptageniidae and Chironomidae were dominant at S4 and S5, respectively (Fig. 2). The share of Simuliidae decreased from S1 to S5, while Chironomidae increased from S1 to S5. Trichopterans were dominant in the headwater section of the Garhwal Himalayan spring-fed streams (Nautiyal et al. 2015) and

Table 1. Geographical co-ordinates of the sampling station in different forest types in H Hiyunl Stream (nadi). Total density (mean, SE) at different stations in Henwal River. Density is calculated from 15 quadrants data at each station. Kruskal-Wallis test (H-test) and Mann-Whitney tests (U-test) determined significant differences in mean densities (indiv. m⁻²) among and between the stations in the Hiyunl Stream.

| Henwal Station | Khuret (S1) | Kurialgaon (S2) | Nagani (S3) | Jajal (S4) | Shivpuri (S5) |
|---|-------------------|------------------|------------------|---------------------|-------------------|
| Forest | Oak Forest | Pine-Oak Forest | Agriculture | Agriculture | Mixed Forest |
| Stream Order | I | II | III | III | III |
| Distance from Source (Km) | 6 | 11 | 21 | 29 | 43 |
| Latitude (°N) | 30.390 | 30.356 | 30.320 | 30.304 | 30.137 |
| Longitude (°E) | 78.325 | 78.336 | 78.325 | 78.344 | 78.391 |
| Altitude (m) | 2,200 | 1,571 | 1,400 | 1,200 | 375 |
| Substrate type | C,P,PMB, St | LMB | C,PMB,St | LMB,C,P,G,St | C, P,G,St |
| Total Mean Density ±SE (Indiv.m ⁻²) | 542.36± 15.18 | 617.49± 15.31 | 649.62± 16.80 | 588.07 ±19.66 | 754.54± 39.88 |
| Final p value (U-test) | S1-S2 0.003653 | S2-S3 0.06448 | S3-S4 0.02122 | S4-S5 =0.0004915 | S1-S5= 2.3E-05 |
| Final p value (H-test) | S1-S5=2.312E-06 | | | | |

C—Cobble | P—Pebble | PMB—Prismatic maturing boulder | LMB—Large maturing boulder | G—Gravel | St—Silt.

Table 2. Percentage composition of benthic macroinvertebrate community in Hiyunl Stream.

| Station | E | T | D | P | C | O | N | L | M |
|---------|--------------|--------------|--------------|------|-----|-----|-----|-----|------|
| S1 | 3.3 | 5.27 | 81.43 | 5.0 | 2.0 | 00 | 1.0 | 2.0 | 00 |
| S2 | 11.05 | 75.00 | 10.52 | 3.43 | 00 | 00 | 00 | 00 | 00 |
| S3 | 6.63 | 80.79 | 3.58 | 00 | 4.0 | 5.0 | 00 | 00 | 00 |
| S4 | 18.79 | 54.51 | 20.69 | 00 | 3.5 | 1.5 | 1.1 | 00 | 00 |
| S5 | 69.29 | 6.29 | 22.85 | 00 | 00 | 00 | 00 | 00 | 1.57 |

E—Ephemeroptera | T—Trichoptera | O—Odonata | L—Lepidoptera | D—Diptera | P—Plecoptera | C—Coleoptera | N—Neuroptera | M—Mollusca.

in headwater zone of Vindhyan spring-fed river Paisuni (Mishra & Nautiyal 2011). In the spring-fed Himalayan streams, Ephemeroptera was dominant taxon in the Khanda Gad (Kumar 1991) and the Gaula in the Kumaun region (Sunder 1997).

The benthic macroinvertebrate assemblages also varied at S1 (Simuliidae-Limnephilidae), S2 (Limnephilidae-Hydropsychidae), S3 (Hydropsychidae-Baetidae), S4 (Heptageniidae-Hydropsychidae), and S5 (Chironomidae-Heptageniidae). This variation was attributed mainly to substratum, forest type and altitude. Simuliade was dominant in Oak forest at S1 while Limnephilidae was dominant in Pine-Oak forest at S2 (Table 1). Nautiyal et al. (2015) also observed similar pattern in the streams/rivers of Uttarakhand Himalaya. Corkum (1992) and Sivaramakrishnan (2005) also reported the impact of forest type on assemblage pattern. The dominance of Hydropsychidae, Heptageniidae, and Chironomidae at S3, S4, S5, respectively, indicated impact of agricultural land-use and substratum, also

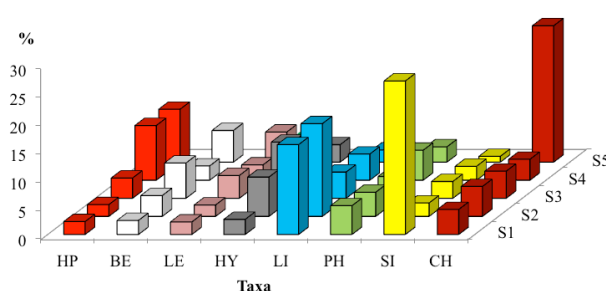


Figure 2. Taxonomic composition of the benthic macroinvertebrate fauna (>1%) at various stations in the Hiyunl Stream. CH—Chironomidae | HP—Heptageniidae | HY—Hydropsychidae | LP—Leptophlebiidae | LI—Limnephilidae | PH—Philopotamidae | SI—Simuliidae.

evident in central Highlands rivers (Mishra & Nautiyal 2013b, 2016).

Functionally, the river continuum concept (Vannote et al. 1980) also supports the distribution pattern of invertebrate fauna, as predators (Simuliidae)

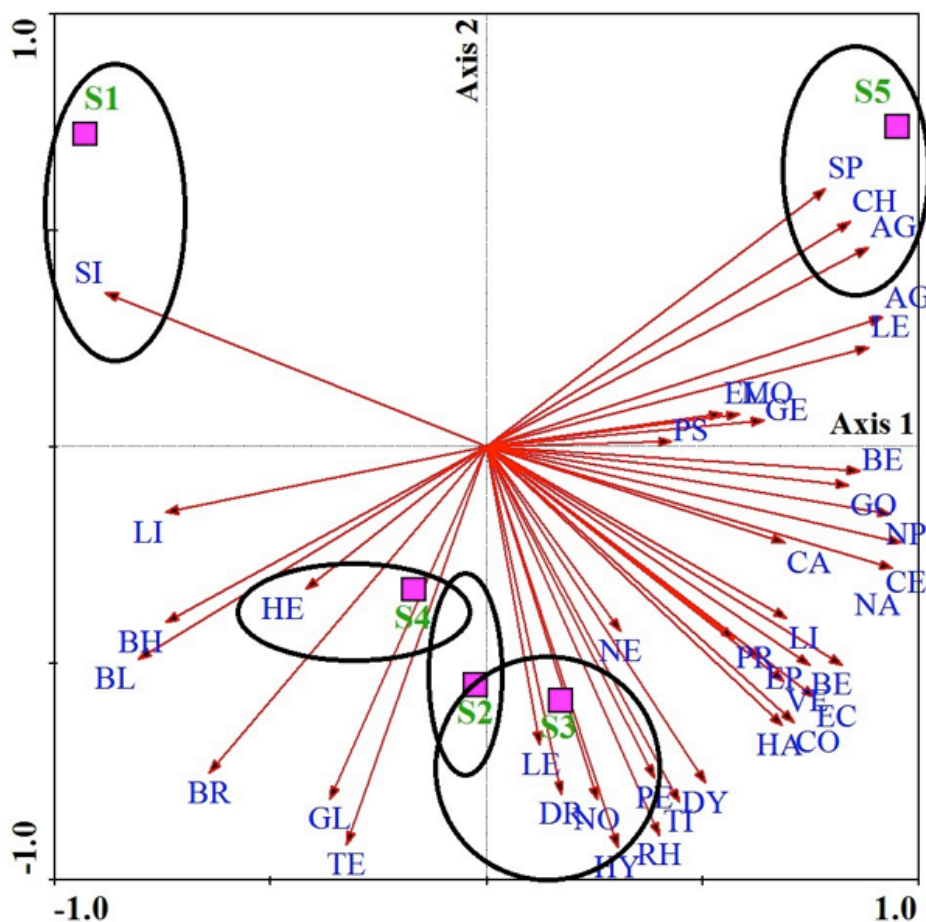


Figure 3. Principal component analysis (PCA): the ordination indicates the characteristic taxa (in circle) through graphical presentation between the taxon (arrows) and station (filled square) in the Hiyunl Stream. The taxa close to the station are characteristic of that station and encircled. HE—Heptageniidae | BA—Baetidae | EP—Ephemerellidae | LE—Leptophlebiidae | CA—Caenidae | SP—Siphonuridae | EC—Ecdyonuridae | HY—Hydropsychidae | LI—Limnephilidae | GL—Glossosomatidae | LP—Leptoceridae | PH—Philopotamidae | BR—Brachycentridae | PSY—Psychomyiidae | RH—Rhyacophilidae | SI—Simuliidae | BL—Blepharoceridae | TE—Tendipedini | CH—Chironomidae | PY—Psychodidae | LT—Leptidae | TI—Tipulidae | PE—Perlidae | PR—Perlidae | CHL—Chloroperlidae | NE—Nemouridae | DR—Dryopidae | HD—Hydrophilidae | EL—Elmidae | HA—Halplidae | PS—Psephenidae | DY—Dytiscidae | SA—Sialidae | CO—Corixidae | NA—Naucoridae | GE—Gerridae | VE—Vellidae | NP—Nepidae | NO—Notonectidae | BE—Belostomatidae | AGN—Agrionidae | GO—Gomphidae | CE—Coenagrionidae | CHP—Chlorocyphidae | AG—Agridae | LD—Lipidoptera | MO—Mollusca.

were abundant at S1, followed by collectors at S2 (Limnephilidae) and S3 (Hydropsychidae), scrappers (Heptageniidae) at S4, and collectors (Chironomidae) at S5.

Cluster analysis revealed highest similarity between S3 and S4 as compared to other stations as both the stations were functionally similar (gathering collectors) because of common land-use pattern (agriculture) and stream order (Table 1). The distance between these two stations was c. 8km. These two stations were more similar to S2 and then S1. S5 was noticeably different from all of them (Fig. 3). The similarity among the stations in cluster analysis is also evident in the PCA (Fig. 4) as the circle of S2, S3 and S4 were close to each other and closer to S1 rather than S5.

Characteristic taxa: principal component analysis (PCA)

The eigen values for PCA axis 1 ($\lambda_1=0.501$) and 2 ($\lambda_2=0.293$) explained cumulative variance in taxonomic composition and taxon-environmental relationships in the stream and caused 5.01% and 29.3% variation in the taxon-site relationship, respectively. The characteristic benthic macroinvertebrate taxa differed at S1, S2, S3, S4 and S5, Simuliidae was characteristic taxa at S1, while Limnephilidae taxa at S2. Hydropsychidae, Rhyacophilidae, Tipulidae, Perlodidae, Dryopidae, and Notonectidae were characteristic at S3. Heptageniidae was characteristics at S4, while Chironomidae, Siphonuridae, and Agrionidae were characteristic taxa at S5 (Fig. 3). Functionally, filtering collector was dominant at S1, shredder at S2, gathering collectors-

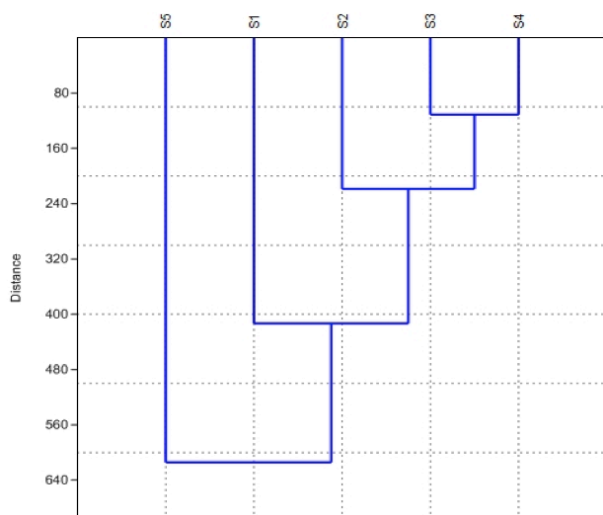


Figure 4. Cluster analysis indicated the similarity among the stations based on linkage distance among the stations.

predators at S3, scraper at S4, and gathering collectors-predators at S5.

The variation in the characteristic taxa at S1, S2, S3, S4, and S5 was attributed to difference in substrate heterogeneity (Table 1) and forest type (S1—oak forest, S2—oak-pine forest, S5—mixed forest). The land-use type (agriculture), however, was similar at S3 and S4. Functionally, the stream was heterotrophic as the gathering and filtering collectors prevailed, attributed to presence of fine particulate organic matter (FPOM) from agricultural land in the lower section of the stream as also observed in the central Indian rivers (Mishra & Nautiyal 2013a). Agriculture is both extensive and intensive in this lower stretch of the stream and anthropogenic influences hence become a prominent factor because of fertilizer and other inputs. The impact of agriculture and habitation was also observed on the distribution of benthic macroinvertebrate fauna in Himalayan rivers (Mishra et al. 2013; Nautiyal et al. 2015) and central Indian rivers (Mishra & Nautiyal 2013a). Vannote et al. (1980) suggested that the longitudinal or continuum models predict that invertebrate assemblages will change along the length of rivers as evident in the present study.

CONCLUSION

The present study indicated that the mean density of benthic macroinvertebrates increased along the stream (except S4), and differed significantly between and among the stations. The taxonomic composition and

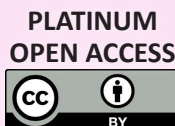
function of invertebrate fauna varied along the stream length indicated the impact of substrate heterogeneity and land-use type. At some stations, however, the functional composition was observed to be similar with other stations. Thus, the present study indicated the variations in the taxa along the stream.

REFERENCES

- Burks, B.D. (1953). The Mayflies or Ephemeroptera of Illinois. *Bulletin of the Illinois State Laboratory of Natural History* 26: 1–215.
- Buss, D.F., D.F. Baptista, J.L. Nessman & M. Egler (2004). Substrate specificity environmental degradation and disturbance structuring macroinvertebrate assemblages in neotropical streams. *Hydrobiologia* 518(1): 179–188.
- Buss, D.F., D.F. Baptista, M.P. Silveira, J.L. Nessimian & L.F.M. Dorville (2002). Influence of water chemistry and environmental degradation on macroinvertebrates assemblages in a river basin in south-east Brazil. *Hydrobiologia* 481(1–3): 125–136.
- Camargo, J.A. & N.J. Voeiz (1998). Biotic and abiotic changes along the recovery gradient of two impounded rivers with different impoundment use. *Environmental Monitoring and Assessment* 50(2): 143–158.
- Collier, K.J., B.J. Smith, J.M. Quinn, M.R. Scarsbrook, N.J. Halliday, G.F. Croker & S.M. Parkyn (2000). Biodiversity of stream invertebrate faunas in a Waikato hill-country catchment in relation to land use. *New Zealand Entomologist* 23: 9–22.
- Corkum, L.D. (1992). Relationship between density of macroinvertebrate and detritus in the rivers. *Arch fur Hydrobiologia* 239: 149–166.
- Edmunds, G.F., S.L. Jensen & L. Berner (1976). *The may flies of north and central America*. University Minnesota Press, Minneapolis, 330pp.
- Jiang, X., J. Xiong, Z. Xie & Y. Chen (2011). Longitudinal patterns of macroinvertebrate functional feeding groups in a Chinese river system: A test for river continuum concept (RCC). *Quaternary International* 244: 289–295.
- Julka, J.M., H.S. Vasistht & B. Bala (1999). Distributions of aquatic insects in a small streams in north west Himalayas, Indian. *Journal of Bombay Natural History Society* 96(1): 55–63.
- Kratzer, E.B., J.K. Jackson, D.B. Arscott, A.K. Aufdenkampe, C.L. Dow, L.A. Kaplan, J.D. Newbold & B.W. Sweeney (2006). Macroinvertebrate distribution in relation to land use and water chemistry in New York City drinking-water-supply watersheds. *Journal of North American Benthological Society* 25(4): 954–976.
- Kumar, N. (1991). Ecological studies on the macrozoobenthic communities of some Hill streams of the Alaknanda river system. D.Phil. Thesis H N B Garhwal University, Srinagar (Garhwal), 216pp.
- Kumar A., A. Bhardwaj, P. Kumar and H. Padaliya (2017). Delineation of Micro-Watershed using Geo-Spatial Techniques. Suresh Gyan Vihar University. *International Journal of Environment, Science and Technology* 3(2): 14–34.
- Mishra, A.S. & P. Nautiyal (2011). Factors governing longitudinal variation in benthic macroinvertebrate fauna of a small Vindhyan River in central highlands ecoregion (central India). *Tropical Ecology* 52(1): 103–112.
- Mishra, A.S. & P. Nautiyal (2013a). Functional composition of benthic macroinvertebrate fauna in the plateau rivers, Bundelkhand, central India. *Journal of Threatened Taxa* 5(13): 4752–4758. <https://doi.org/10.11609/JOTT.03226.4752-8>.
- Mishra, A.S. & P. Nautiyal (2013b). Longitudinal distribution of benthic macroinvertebrate assemblages in a central highlands river, the Tons (central India). *Proceedings of the National Academy of Sciences (Biological Sciences)* 83(1): 47–51. <http://doi.org/10.1007/s40011-012-0083-4>
- Mishra, A.S. & P. Nautiyal (2016). Substratum as determining factor

- for the distribution of benthic macroinvertebrate fauna in a river ecosystem. *Proceedings of the National Academy of Sciences (Biological Sciences)* 86(3): 735–742. <https://doi.org/10.1007%2Fs40011-015-0520-2>
- Mishra, A.S., P. Nautiyal & V.P. Semwal (2013c)** Distributional patterns of benthic macroinvertebrate fauna in the glacier fed rivers of Indian Himalaya. *Our Nature* 11(1): 36–44.
- Moretti, M.S. & M. Callisto (2005)**. Bio-monitoring of benthic macroinvertebrates in the middle Doce River watershed. *Acta Limnologica Brasiliensia* 17(3): 267–281.
- Nautiyal, P. (1997)**. Migratory phenomenon of the endangered Himalayan Mahseer *Tor putitora* in relation to the Ecology of the river Ganga, Final Technical Report of Research Project No. 14/28/92-submitted to the Ministry of Environment Forests New Delhi under Man & Biosphere Program.
- Nautiyal, P. & A.S. Mishra (2013)** Variations in benthic macroinvertebrate fauna as indicator of land use in the Ken River, central India. *Journal of Threatened Taxa* 5(7): 4096–4105; <https://doi.org/10.11609/JOTT.o3211.4096-105>
- Nautiyal, P. & A.S. Mishra (2014)** Large scale distributional Patterns of benthic macroinvertebrate fauna in the Himalayan streams. pp. 181–187. In: Gupta, N. & D.K. Gupta (eds.) *Environment and Biodiversity*. Narendra Publishing House, Delhi.
- Nautiyal, P., R. Nautiyal, V. P. Semwal, A. S. Mishra, J. Verma, D.P. Uniyal, M. Uniyal & K.R. Singh (2013)**. Ecosystem health indicators in the Ganga Basin (Uttarakhand, India): Biodiversity, spatial patterns in structure and distribution of benthic diatoms, macro-invertebrates and ichthyofauna. *Aquatic Ecosystem Health & Management* 16(4): 362–373.
- Nautiyal, P., A.S. Mishra & V.P. Semwal (2015)**. Spatial distribution of benthic macroinvertebrate fauna in mountain streams of Uttarakhand, India, pp. 31–51. In: Rawat, M., S. Dookia & C. Sivaperuman (eds.) *Aquatic Ecosystem: Biodiversity, Ecology and Conservation*, Springer. https://doi.org/10.1007/978-81-322-2178-4_4
- Nautiyal P., A.S. Mishra, J. Verma & A. Agrawal (2017)**. River ecosystems of the central highland ecoregion: spatial distribution of benthic flora and fauna in the plateau rivers (tributaries of the Yamuna and Ganga) in central India. *Aquatic Ecosystem Health & Management* 20(1–2): 43–58. <https://doi.org/10.1080/14634988.2017.1296324>
- Nesemann, H., G. Sharma & R.K. Sinha (2011)**. Benthic macro-invertebrate fauna and “marine elements” sensu annandale (1922) highlight the valuable Dolphin habitat of river Ganga in Bihar – India. *Taprobanica* 3(1): 18–30.
- Ormerod, S.J., S.D. Rundle, S.M. Wilkinson, G.P. Daly, K.M. Dal & I. Juttner (1994)**. Altitudinal trends in the diatoms, bryophytes, macroinvertebrates and fish of a Nepalese river system. *Freshwater Biology* 32: 309–322.
- Pennak, R.W. (1953)**. Fresh water Invertebrates of the United States, 2nd Edition. John Wiley & Sons, New York, 512–733pp.
- Pereira, D. & S.J. De Luca (2003)**. Benthic macroinvertebrates and the quality of the hydric resources in Maratá Creek basin (Rio Grande do Sul, Brazil). *Acta Limnologica Brasiliensia* 15(2): 57–68.
- Rundle, S.D., A. Jenkins & S.J. Ormerod (1993)**. Macroinvertebrate communities in streams in the Himalaya, Nepal. *Freshwater Biology* 30: 169–180
- Sandin, L. & R.K. Johnson (2004)**. Local, landscape and regional factors structuring benthic macroinvertebrate assemblages in Swedish streams. *Landscape Ecology* 19(5): 501–514.
- Silveira, M.P., D.F. Buss, J.L. Nessimian & D.F. Baptista (2006)**. Spatial and temporal distribution of benthic macroinvertebrates in southeastern Brazilian river. *Brazilian Journal of Biology* 66(2B): 623–632.
- Singh, H.R. & P. Nautiyal (1990)**. Altitudinal changes and the impact of municipal sewage on the community structure of macrobenthic insects in the torrential reaches of the river Ganges in the Garhwal Himalaya (India). *Acta Hydrobiologica* 32: 407–421.
- Singh, H.R., P. Nautiyal, A.K. Dobriyal, R.C. Pokhriyal, M. Negi, V. Baduni, R. Nautiyal, N.K. Agrawal, P. Nautiyal & A. Gautam (1994)**. Water quality of river Ganga (Garhwal Himalaya). *Acta Hydrobiologica* 36(1): 3–15.
- Smith, R.F. & W.O. Lamp (2008)**. Comparison of insect communities between adjacent headwater and main-stem streams in urban and rural watersheds. *Journal of North American Benthological Society* 27(1): 161–175.
- Sivaramakrishnan, K.G., V.K. Sridhar & S. Marimuthu (1995)** Spatial patterns of benthic macroinvertebrate distribution along river Kaveri and its tributaries (India). *International Journal of Ecology and Environmental Science* 21: 141–161.
- Sunder, S. (1997)**. Biotic communities of Kumaon Himalaya river - The Gaula - 1. Macro-benthic invertebrates. *Proceedings of the National Academy of Sciences (Biological Sciences)* 67(B) II: 157–167.
- ter Braak, C.J.F. & P. Smilauer (2002)**. *CANOCO Reference Manual and Canodraw for Windows User's Guide: Software for Canonical Community Ordination (version 4.5)*. Microcomputer Power (Ithaca, NY, USA).
- Vannote, R.L., G.W. Minshall, K.W. Cummins, J.R. Sedell & C.E. Cushing (1980)**. The river continuum concept. *Canadian Journal of Fisheries & Aquatic Sciences* 37: 130–137.
- Wurdig, N.L., C.S.S. Cenzano & D.M. Motta (2007)**. Macroinvertebrate communities structure in different environments of the Taim Hydrological System in the state of Rio Grande do Sul, Brazil. *Acta Limnologica Brasiliensia* 19(4): 57–68.
- Internet Resources**
<https://zenodo.org/record/1216911#.XQdBERz7S01>. Publication date: June 7, 1965. <https://doi.org/10.5281/zenodo.1216911>
<https://zenodo.org/record/1216913#.XQdAWLz7S00>. Publication date: June 6, 1967. <https://doi.org/10.5281/zenodo.1216913>
- Author details:** DR. VIJAY PRAKASH SEMWAL, Assistant Professor, Major contributions: Research on Benthic macroinvertebrate fauna in the Himalayan rivers/streams. DR. ASHEESH SHIVAM MISHRA, Assistant Professor & Head, performing research on distribution and population ecology of diatom, benthic macroinvertebrate and fish in Central Highlands & Himalayan rivers/streams. Expertise on Environmental Flow studies on the river Ganga and its tributaries, Environmental Impact Assessment (HEP).
- Author contribution:** VPS data collection from the study area & identify the taxa. ASM worked on data analysis using various softwares and manuscript writing, graphs, and map preparation.





The Journal of Threatened Taxa (JoTT) is dedicated to building evidence for conservation globally by publishing peer-reviewed articles online every month at a reasonably rapid rate at www.threatenedtaxa.org. All articles published in JoTT are registered under [Creative Commons Attribution 4.0 International License](https://creativecommons.org/licenses/by/4.0/) unless otherwise mentioned. JoTT allows unrestricted use, reproduction, and distribution of articles in any medium by providing adequate credit to the author(s) and the source of publication.

ISSN 0974-7907 (Online) | ISSN 0974-7893 (Print)

September 2019 | Vol. 11 | No. 12 | Pages: 14471–14630

Date of Publication: 26 September 2019 (Online & Print)

DOI: 10.11609/jott.2019.11.12.14471-14630

www.threatenedtaxa.org

Article

Ornithophony in the soundscape of Anaikatty Hills, Coimbatore, Tamil Nadu, India

– Chandrasekaran Divyapriya & Padmanabhan Pramod, Pp. 14471–14483

Communications

A case study on the public knowledge and awareness of the Philippine Pangolin *Manis culionensis* (Mammalia: Pholidota: Manidae)

– Frances Mae Tenorio & Joselito Baril, Pp. 14484–14489

Winter food habits of the Common Palm Civet *Paradoxurus hermaphroditus* (Mammalia: Carnivora: Viverridae) in Patna Bird Sanctuary, India

– Khursid Alam Khan, Jamal Ahmad Khan, Khursheed Ahmad & Narendra Mohan, Pp. 14490–14495

Report of five interesting avian species from Durgapur ecoregion, West Bengal, India by citizen science effort

– Sagar Adhurya & Shantanu Bhandary, Pp. 14496–14502

Brief insight into the behavior, activity, and interspecific interactions of urban *Trimeresurus (Cryptelytrops) albolabris* (Reptilia: Squamata: Viperidae) vipers in Bangkok, Thailand

– Curt Hrad Barnes & Tyler Keith Knierim, Pp. 14503–14510

The distributional pattern of benthic macroinvertebrates in a spring-fed foothill tributary of the Ganga River, western Himalaya, India

– Vijay Prakash Semwal & Asheesh Shivam Mishra, Pp. 14511–14517

Seasonal vegetation shift and wetland dynamics in vulnerable granitic rocky outcrops of Palghat Gap of southern Western Ghats, Kerala, India

– Pathiyil Arabhi & Maya Chandrasekharan Nair, Pp. 14518–14526

A comprehensive checklist of endemic flora of Meghalaya, India

– Aabid Hussain Mir, Krishna Upadhaya, Dilip Kumar Roy, Chaya Deori & Bikarma Singh, Pp. 14527–14561

Shola tree regeneration is lower under *Lantana camara* L. thickets in the upper Nilgiris plateau, India

– Muneer Ul Islam Najar, Jean-Philippe Puyravaud & Priya Davidar, Pp. 14562–14568

Overcoming the pollination barrier through artificial pollination in the Wild Nutmeg *Knema attenuata* (Myristicaceae), an endemic tree of the Western Ghats, India

– Murugan Govindakurup Govind, Koranapallil Bahuleyan Rameshkumar & Mathew Dan, Pp. 14569–14575

Short Communications

The first photographic record of the Red Panda *Ailurus fulgens* (Cuvier, 1825) from Lamjung District outside Annapurna Conservation Area, Nepal

– Ganesh Ghimire, Malcolm Pearch, Badri Baral, Bishnu Thapa & Rishi Baral, Pp. 14576–14581

Partner



صندوق محمد بن زايد
للمحافظة على
الكائنات الحية
The Mohamed bin Zayed
SPECIES CONSERVATION FUND

Member



Dhole *Cuon alpinus* (Mammalia: Carnivora: Canidae) rediscovered in Bardia National Park, Nepal

– Shailendra Kumar Yadav, Babu Ram Lamichhane, Naresh Subedi, Ramesh Kumar Thapa, Laxman Prasad Poudyal & Bhagawan Raj Dahal, Pp. 14582–14586

Observations of Brown Mongoose *Herpestes fuscus* (Mammalia: Carnivora: Herpestidae) in the wet evergreen forests of the Western Ghats, India

– Vignesh Kamath & Kadaba Shamanna Seshadri, Pp. 14587–14592

Further studies on two species of the moth genus *Paralebeda* Aurivillius (Lepidoptera: Bombycoidea: Lasiocampidae) from northwestern India

– Amritpal Singh Kaleka, Devinder Singh & Sujata Saini, Pp. 14593–14598

The genus *Grewia* (Malvaceae: Grewioideae) in Andaman & Nicobar Islands, India with a conservation note on the endemic *G. indandamanica*

– K.C. Kishor & Mayur D. Nandikar, Pp. 14599–14605

Three grasses (Poaceae), additions to the flora of Andhra Pradesh, India

– Anil Kumar Midigesi & Boyina Ravi Prasad Rao, Pp. 14606–14611

Ethnobotanical survey of indigenous leafy vegetables consumed in rural areas of Terai-Dooars region of West Bengal, India

– Mallika Mazumder & Anup Kumar Sarkar, Pp. 14612–14618

Australasian sequestrate Fungi 20: *Russula scarlatina* (Agaricomycetes: Russulales: Russulaceae), a new species from dry grassy woodlands of southeastern Australia

– Todd F. Elliott & James M. Trappe, Pp. 14619–14623

Notes

The Himalayan Crestless Porcupine *Hystrix brachyura* Linnaeus, 1758 (Mammalia: Rodentia: Hystricidae): first authentic record from Bangladesh

– Mohammad Ashraf Ul Hasan & Sufia Akter Neha, Pp. 14624–14626

A new distribution record of *Asplenium scalare* Rosenst. (Aspleniaceae) in India

– Periyasamy Vijayakanth, Jaideep Mazumdar, S. Sahaya Sathish, Veluchamy Ravi & Ramachandran Kavitha, Pp. 14627–14628

Response & Reply

Response to spiders of Odisha: a preliminary checklist additions to the spider checklist of Odisha

– John T.D. Caleb, Pp. 14629–14630

Reply to response: spiders of Odisha

– Sudhir Ranjan Choudhury, Manju Siliwal & Sanjay Keshari Das, Pp. 14630

Publisher & Host

